

## Sloane Avenue, SW3

### £500,000

A stunning one bedroom apartment that has been finished to a very high standard. This property would work excellently as a rental investment or London base.

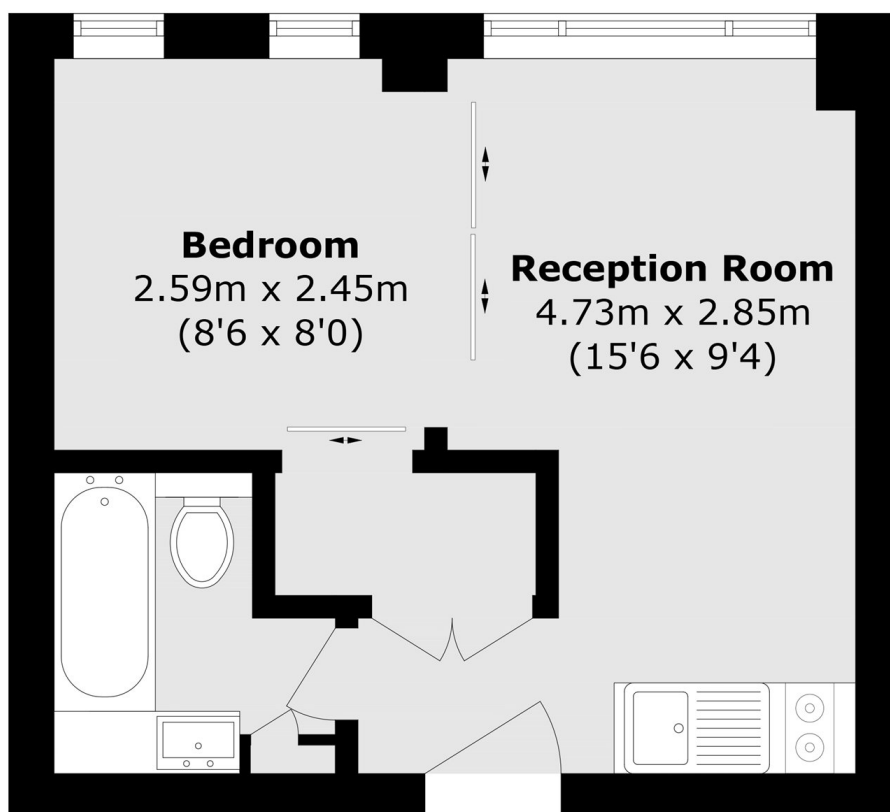
Nell Gwynn House is a popular, portered block located on Sloane Avenue which is in close proximity to Sloane Square, South Kensington and the King's Road.

### Features

- 24 Hour Porter
- Recently Refurbished
- One Bedroom
- Lift
- One Bathroom
- Ideal Rental Investment

# Sloane Avenue, London, SW3

## Third Floor



Total area (approx.): 25.0 sq. m (269.1 sq. ft)