



Guide Price
£325,000

Freehold

3x  2x  1x 

**Roman Way, Boughton
Monchelsea, Maidstone,
Kent, ME17**

OVER 60?

Secure this property
for up to **59% less!**

Wards
Helping you move forwards



Main features

- Well presented throughout
- Private rear garden backing onto trees for privacy
- Garage and driveway
- Popular and modern development, short walk to local shops and amenities
- NO FORWARD CHAIN**

Accommodation

GROUND FLOOR

Entrance Hall
 Downstairs Cloakroom: 6'2 x 3'2 (1.88m x 0.97m)
 Kitchen: 14'2 x 8'6 (4.32m x 2.59m)
 Lounge/Diner: 15'10 x 15'3 (4.83m x 4.65m)

FIRST FLOOR

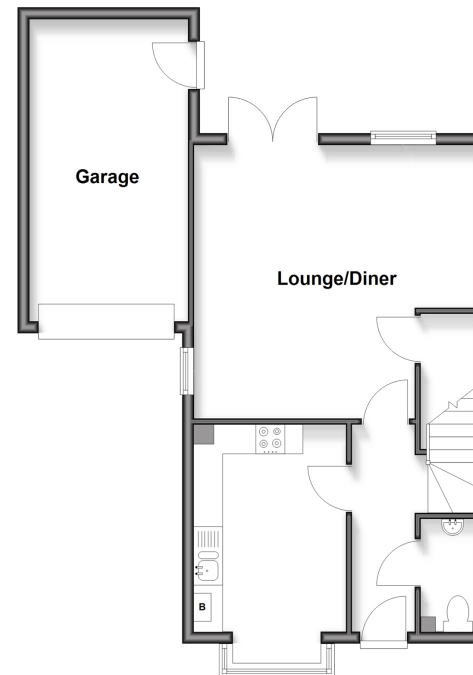
Landing
 Bedroom 1: 12'4 x 10'6 (3.76m x 3.20m)
 En Suite Shower Room: 6'9 x 5'6 (2.06m x 1.68m)
 Bedroom 2: 9'6 x 9'6 (2.90m x 2.90m)
 Bedroom 3: 9'6 x 6'1 (2.90m x 1.86m)
 Bathroom: 6'3 x 5'9 (1.91m x 1.75m)

OUTSIDE

Garage and Off Road Parking
 Front and Rear Gardens

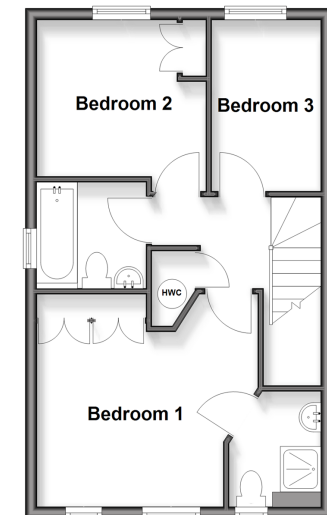
Ground Floor

Approx. 55.6 sq. metres (599.0 sq. feet)



First Floor

Approx. 40.8 sq. metres (439.1 sq. feet)



Call Loose - 01622 744067 ■ wardsof Kent.co.uk

Legal advice should be taken to verify fixtures/fittings, planning, alterations and/or lease details
 Through a Homewise Home For Life Plan people aged 60+ can secure this property for up to 59% less, by purchasing a Lifetime Lease

Appliances & services are untested, dimensions are approximate and floor plans are not to scale



13021682/20260218/VMK/VMK