



Wilkinson Close, NW2

TO LET - £2,850 Per Month

AVAILABLE TO LET- is this stunning three bedroom, two bathroom flat that is situated within this newly designed development in the heart of Cricklewood - an area which is currently undergoing a multi-billion pound regeneration project.

The apartment is of a very high specification with neutral décor throughout. Accommodation includes a large open plan reception room with engineered oak flooring, modern plan reception room with integrated Siemens appliances, principal bedroom with balcony and en-suite, two further good sized bedrooms, a contemporary bathroom, separate WC and two storage cupboards.

Externally, the development will offer residents access to communal landscaped gardens and courtyards, secure parking, concierge facilities and on-site gym. The apartment also comes with optional parking for an extra £100 per month. Viewing recommended.



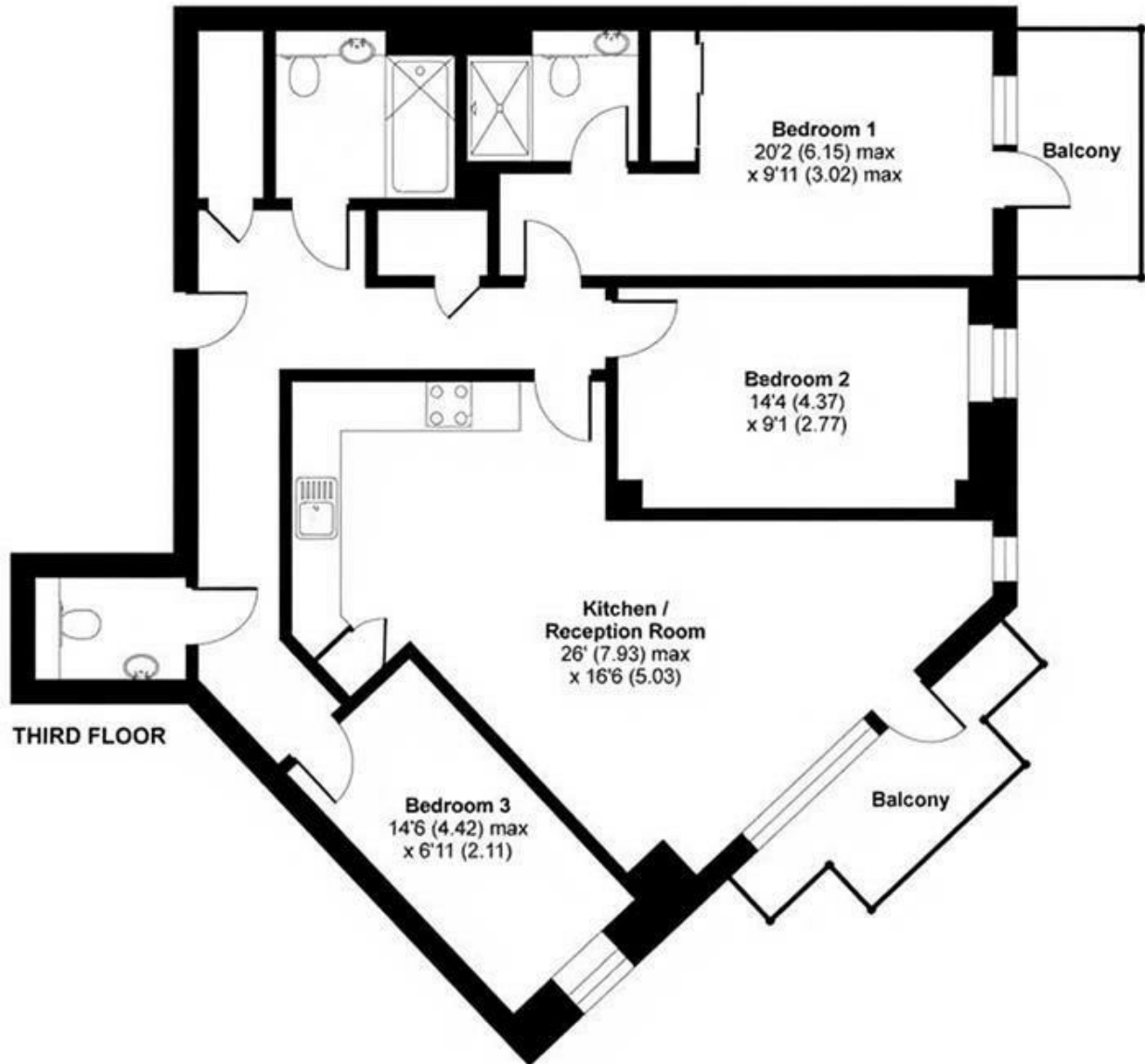
020 8450 9377

rentals@cameronsstiff.co.uk

cameronsstiff.co.uk

Fellows Square, London, NW2

APPROX. GROSS INTERNAL FLOOR AREA 1090 SQ FT 101.3 SQ METRES



EPC: B

Ref: 15083550

Whilst every attempt has been made to ensure the accuracy of the floor plan contained here, measurements of doors, windows and rooms are approximate and no responsibility is taken for any error, omission or misstatement. These plans are for representation purposes only as defined by RICS Code of Measuring Practice and should be used as such by any prospective purchaser. Specifically no guarantee is given on the total square footage of the property if quoted on this plan. Any figure given is for initial guidance only and should not be relied on as a basis of valuation.

Copyright nichecom.co.uk 2018 Produced for Camerons Stiff & Co REF : 262281

