



Worple Street
London, SW14

CHESTERTONS





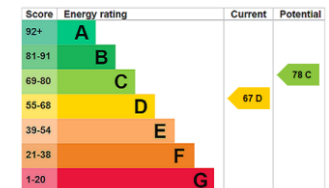
A charming two-bedroom freehold cottage offered to the market with vacant possession and no onward chain.

Tucked away on a peaceful cul-de-sac in the historic area of Mortlake, the property enjoys a highly desirable location close to Barnes and East Sheen. Excellent local amenities, well-regarded schools, and convenient transport links-including Mortlake and Barnes Bridge stations-make this an ideal choice for commuters and families alike.

The cottage also offers exciting potential for extension on both the ground and first floors, subject to the usual consents, in line with similar neighbouring properties.

- Period Cottage
- Freehold
- Two Bedrooms
- Patio Garden

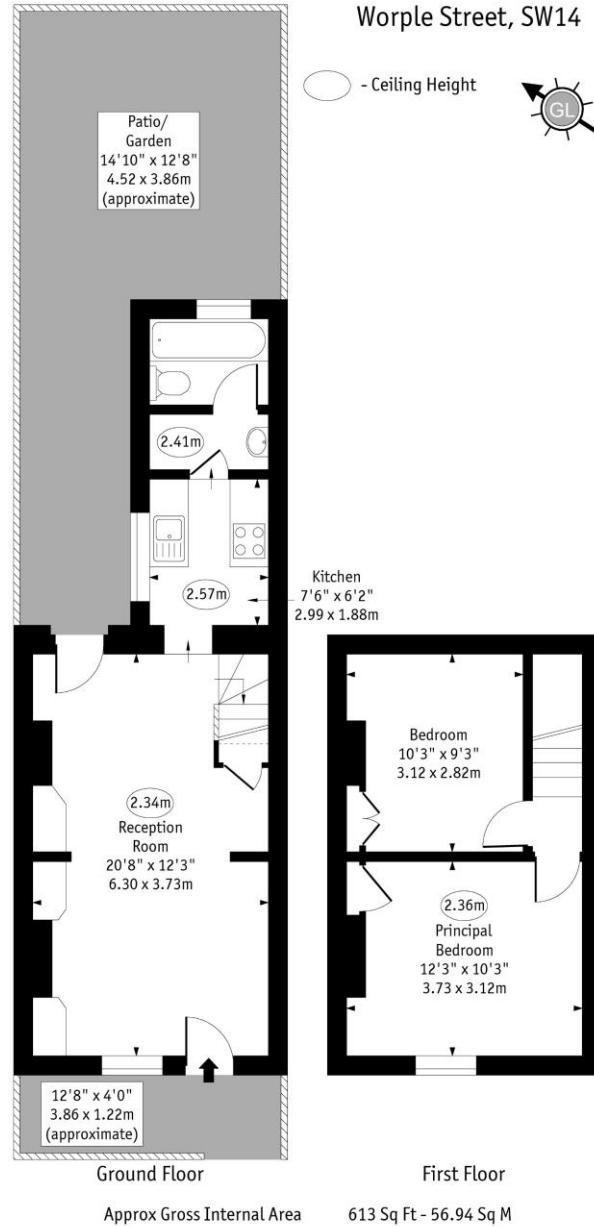
Asking Price £700,000



Tenure: Freehold
Service Charge: N/A
Ground Rent: N/A
Local Authority: London Borough of Richmond upon Thames
Council Tax Band: E

Chestertons East Sheen Sales
 254A Upper Richmond Road West
 East Sheen
 London
 SW14 8AG
 sheen@chestertons.co.uk
 020 8104 0580

Worple Street, SW14



Chesterton UK Services Limited trading as Chestertons for themselves and for the vendor of this property whose agents they are, give notice that (i) these particulars do not constitute any part of an offer or contract, (ii) all statements contained within these particulars are made without responsibility on the part of Chestertons or the vendor, (iii) whilst made in good faith, none of the statements contained within these particulars are to be relied upon as a statement or representation of fact, (iv) any intending purchasers must satisfy themselves by inspection or otherwise as to the correctness of each of the statements contained within these particulars, (v) the vendor does not make or give either Chestertons or any person in their employment any authority to make or give representation or warranty whatsoever in relation to this property. Wide angle lenses may be used. ©Copyright Chestertons | Chesterton UK Services Limited | Registered Office 5th Floor, The Lantern, 75 Hampstead Road, London, NW1 2PL Registered Company Number 05334580.



This paper is 100% recyclable