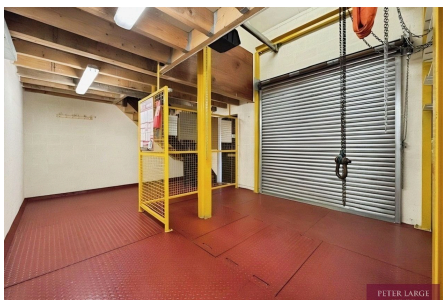


2 Lower Foel Road, Dyserth, Denbighshire LL18 6AT

£155,000

0 0 0

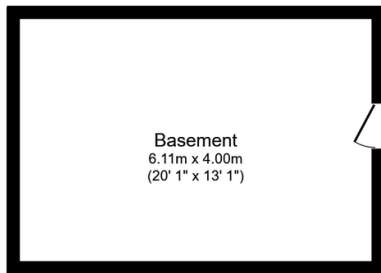


This detached commercial unit is arranged over three levels and stands in the village location Dyserth. It offers a basement storage room with power, light and water tap with plumbing for washing machine, ground floor storage with partial full height of 5.43m. To the first floor there is an OFFICE area with kitchen facility and cloakroom.

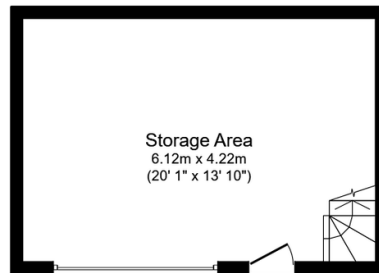
DIRECTIONS From the Prestatyn office turn left and continue through the village of Meliden, turn left at the traffic lights onto Waterfall Road, Dyserth and continue to the next set of lights turning left onto the High Street, take the second turning right onto Lower Foel Road and the building will be seen on the right hand side.

Key Features

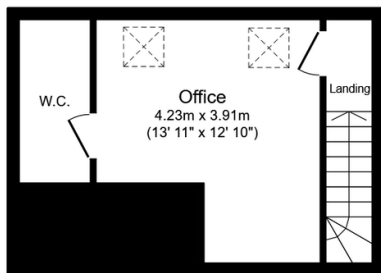
- COMMERCIAL UNIT
- WORKSHOP & STORAGE
- CLOAKROOM
- PARKING FOR ONE VEHICLE
- FREEHOLD
- ARRANGED OVER THREE FLOORS
- FIRST FLOOR OFFICE
- BASEMENT STORAGE
- VILLAGE LOCATION
- EPC - D



Basement
Floor area 25.8 sq.m. (278 sq.ft.)



Ground Floor
Floor area 25.8 sq.m. (278 sq.ft.)



First Floor
Floor area 25.8 sq.m. (278 sq.ft.)

Total floor area: 77.5 sq.m. (834 sq.ft.)

This floor plan is for illustrative purposes only. It is not drawn to scale. Any measurements, floor areas (including any total floor area), openings and orientations are approximate. No details are guaranteed, they cannot be relied upon for any purpose and do not form any part of any agreement. No liability is taken for any error, omission or misstatement. A party must rely upon its own inspection(s). Powered by www.Propertybox.io