



## Hawkesbury Road, SW15

£293,500

This ground-floor flat is presented in fantastic condition and benefits from a private south-facing garden and its own front door. With low service charges and council tax, the flat is ideal for a first time buyer.

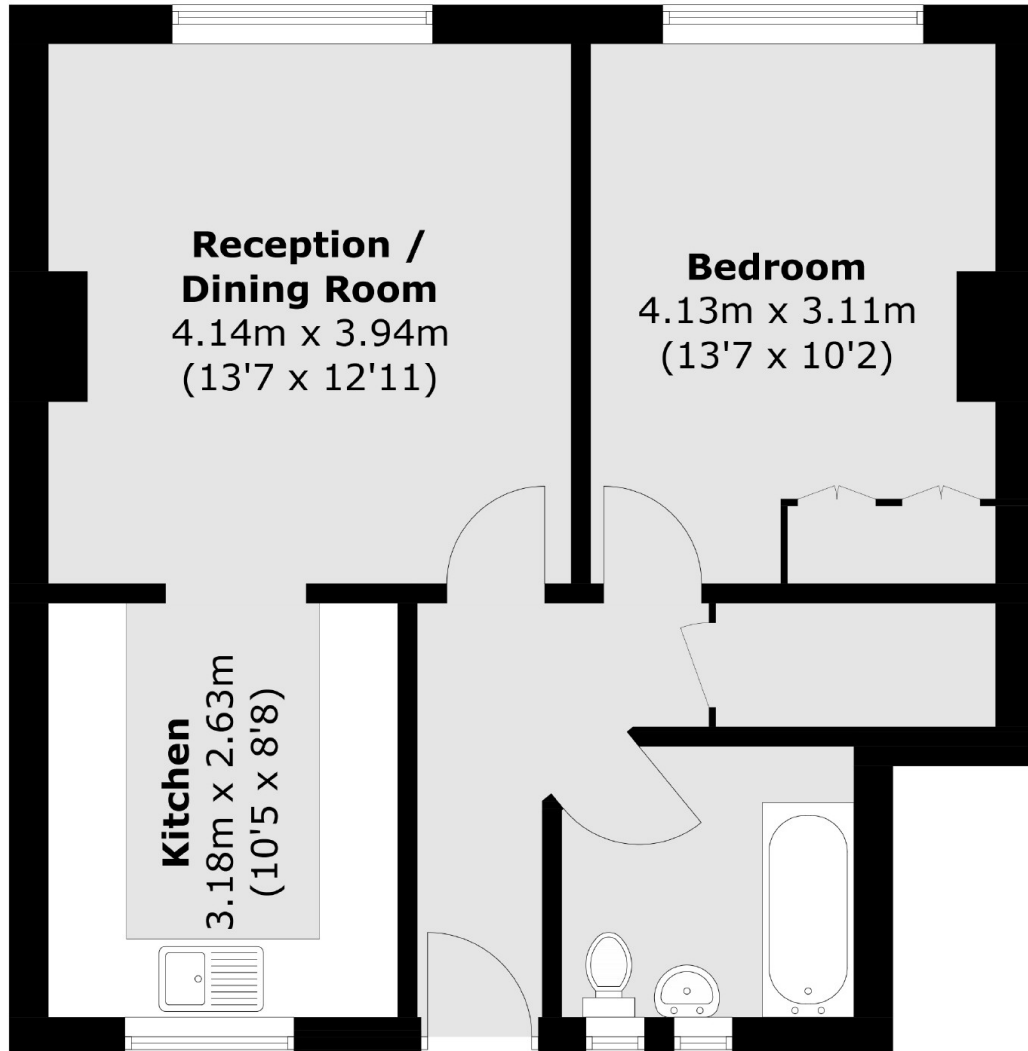
Hawkesbury Road is part of the Dover House Estate, which was created in the 1920s for the benefit of soldiers returning from WW1. The road is a quiet residential street towards the Putney Heath end of the estate so ideal for easy access onto Richmond Park and Wimbledon Common.

(\*These photos have been virtually staged, please rely on the floorplan and your own measurements regarding exactly how furniture would fit in each room)

### Features

- Offers In Excess of
- Private Garden
- One Bedroom
- Own Front Door
- High Spec
- Ground Floor

# Hawkesbury Road, London, SW15



Total area (approx.): 52.1 sq. m (560.8 sq. ft)