

Nevern Square, SW5

£923 Per week

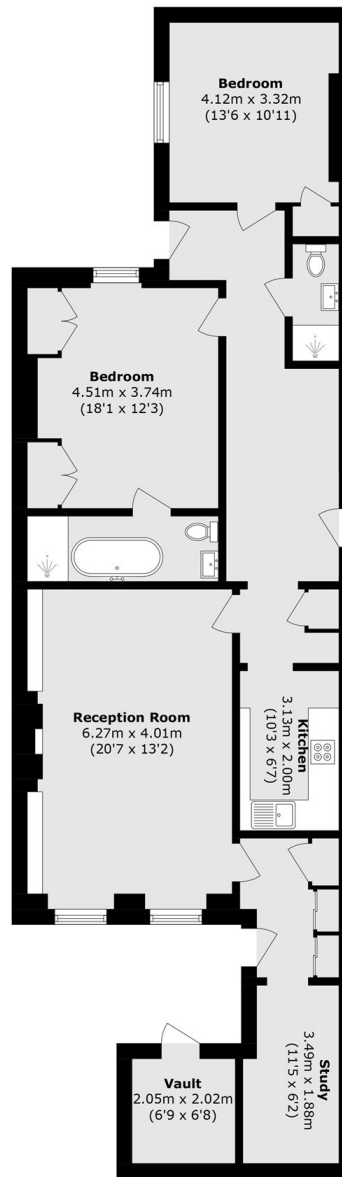
This property offers a generous reception room at the front, seamlessly leading to a modern, fully equipped kitchen. Both bedrooms are true doubles with the principal bedroom benefiting from a luxurious en-suite bathroom.

Arguably Earl's Courts premier garden square, Nevern Square is nestled quietly away from the hustle and bustle of Earls Court Road, whilst remaining comfortably within walking distance of the amenities and tube.

Features

- Two Double Bedrooms
- Wooden Floors
- Fitted Wardrobes
- Garden Square
- High Specification
- Private Garden

Nevern Square, LONDON, SW5



Lower Ground Floor

Total area (approx.): 100.3 sq. m (1079.6 sq. ft)
Vault area (approx.): 4.1 sq. m (44.1 sq. ft)