

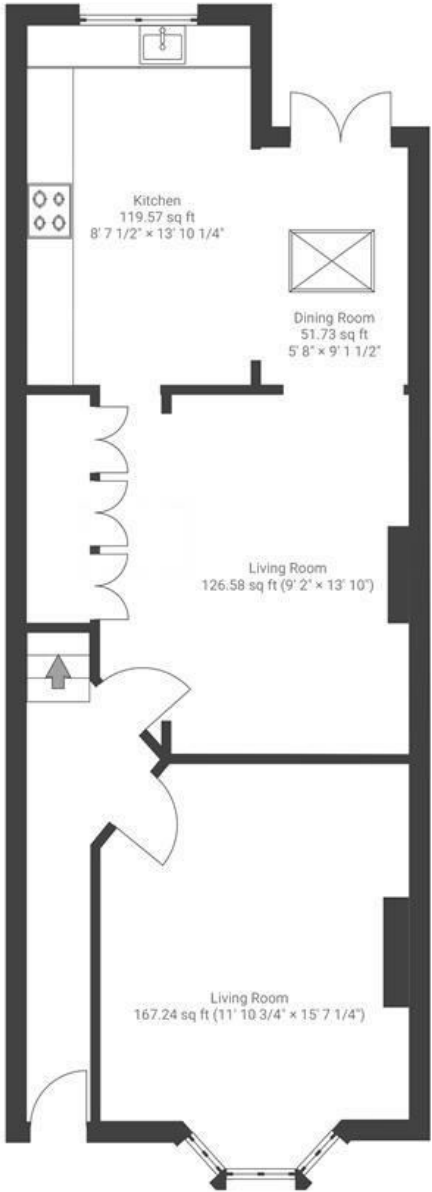
Upper Perry Hill

SOUTHVILLE

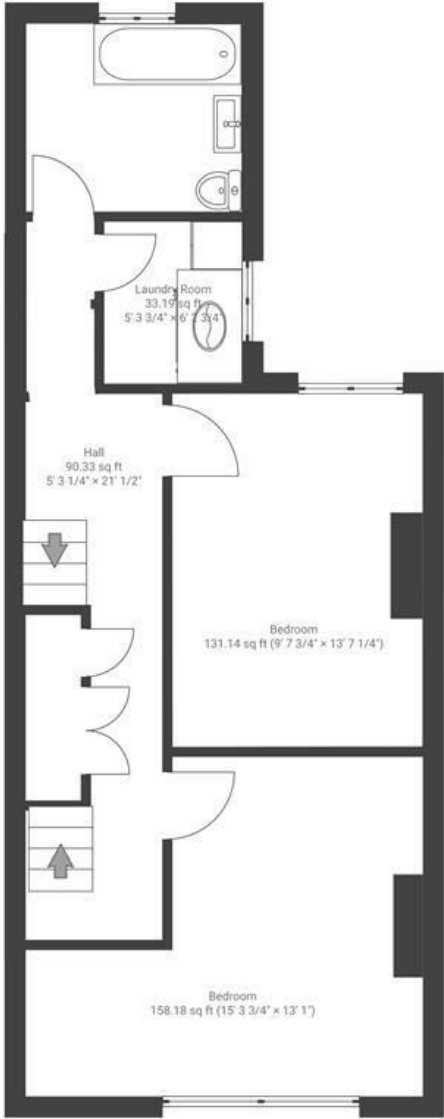
APPROXIMATE FLOOR AREA
130 SQM / 1402 SQFT



GROUND FLOOR



FIRST FLOOR



SECOND FLOOR



Boardwalk

Upper Perry Hill

SOUTHVILLE, BRISTOL



£550,000



3 Bedrooms



BS3 1NH



2 Bathrooms

"We truly love living in our wonderful home on Upper Perry Hill, a quiet and friendly street in an amazing location next to so many great things to keep us busy. We've fully renovated the house in the 14 years we have been here making it our own. It may look small from the outside but inside we have a large open living space and big bedrooms which have been great for our young family. Although narrow, there is plenty of space to park. We will be very sad to leave our beautiful house but know it make a great home for its new owner!"

