

Ruspini House

Parker Street

Covent Garden | London WC2



| *tavistock*bow

Ruspini House

Parker Street | Covent Garden

Four newly refurbished apartments perfectly positioned between Covent Garden & Holborn

A stylish development of four individually designed apartments that embrace urban living, thoughtfully refurbished in warm neutral tones, with contemporary finishes and comfort in mind.

Three of the four units feature outdoor space, a rarity in such a central location.

Taking its name from Italian-born surgeon, dentist and philanthropist, Chevalier Bartholomew Ruspini, founder of The Royal Masonic School for Girls, Ruspini House has been thoughtfully reimagined as a residential scheme perfectly suited to life in the modern age.





From the two crowning duplex apartments on the upper floors with rooftop views of London's historic West End, to the carefully designed one-bedroom apartment created for city living, each apartment offers well-proportioned living spaces decorated in a calming palette of Farrow & Ball tones.

Skirting, architraves and doorframes are painted in a rich Anthracite Grey, while kitchens are a mix of White, Dove Grey & Marina Blue, tones that create a truly cosmopolitan aesthetic.

Easy to care for, engineered European oak floors feature throughout, with kitchens benefitting from integrated Bosch appliances including an induction hob, oven, microwave, dishwasher, washing machine and larder-style fridge/freezer.

Ruspini House benefits from a passenger lift and residents have convenient access to six secure bike storage units, enhancing the building's green credentials and ideal for those who prefer the freedom of two wheels.







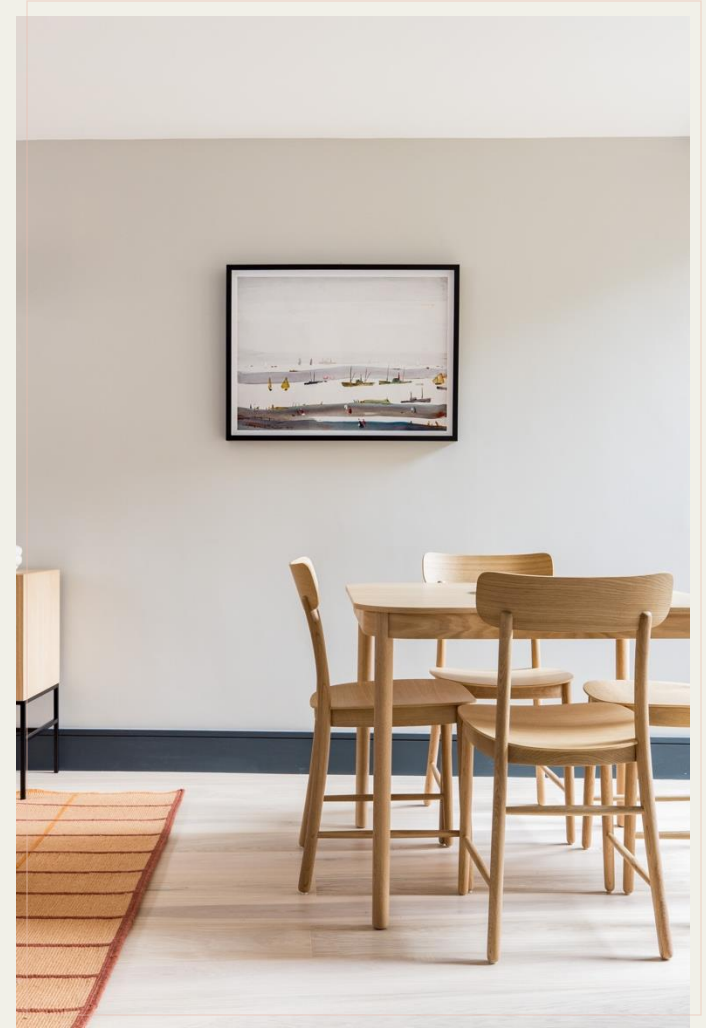
Positioned in a quiet enclave on the eastern edge of Covent Garden bordering historic Holborn, Ruspini House has London's rich cultural heritage on the doorstep, with everything from the iconic Royal Opera House, vibrant Theatreland, the bright lights and creativity of Soho, to London's legal district centred around Lincoln's Inn Fields and the City of London to the east.

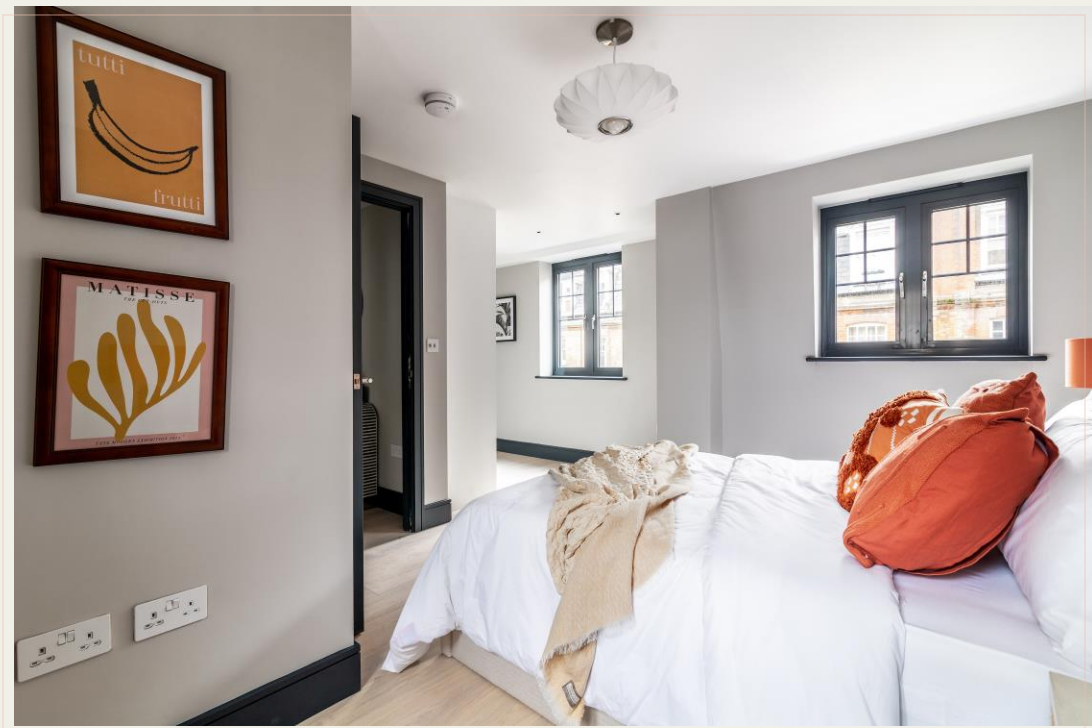




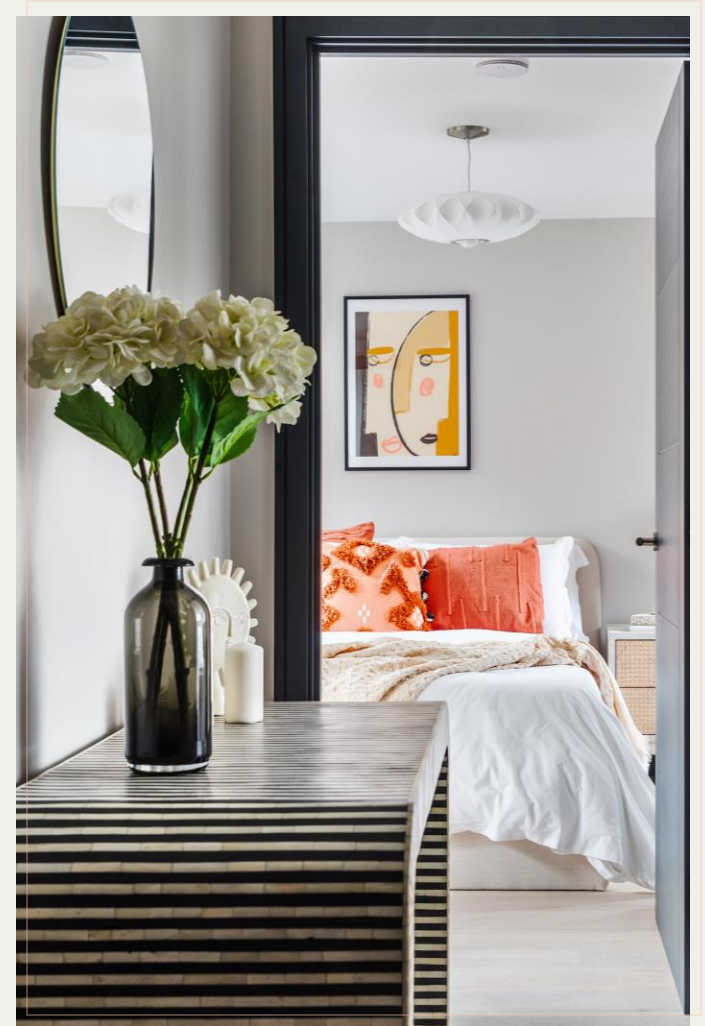


Modern finishes combined with a contemporary colour palette create a sense of calm in every apartment.





Every detail has been thoughtfully considered, with resident comfort at the forefront of design.





High quality bespoke painted joinery and beautiful natural timber floors feature throughout each apartment.

Lovely natural light is a recurring feature across the entire development.







Fresh and highly contemporary bathrooms feature clean lines, matte black brassware and both overhead and hand-held showers.

Integrated shelving and bespoke bathroom cabinets provide useful storage.



floorplans

Ruspini House



| *tavistock*bow

floorplans

22 Parker Street | Apt. 1

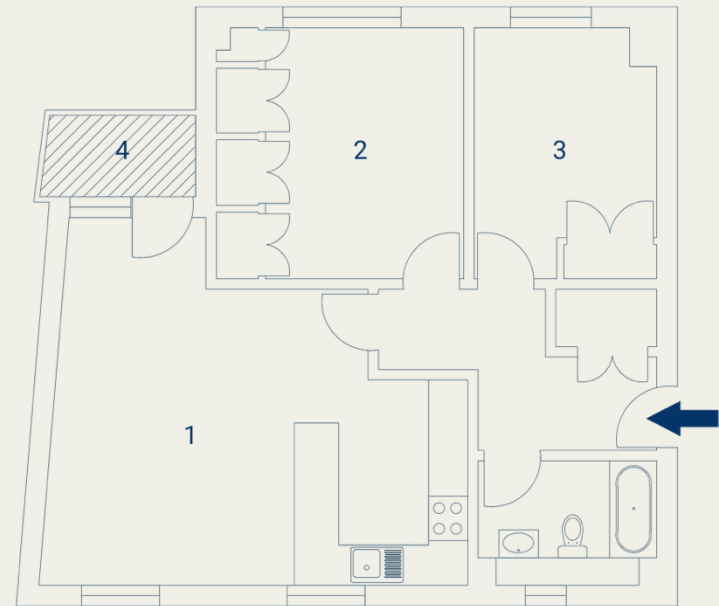
second floor | 2 bed

Ruspini House, WC2

Approximate Gross Internal Area 63 sq m / 678 sq ft
Excluding External Balcony of 2 sq m / 21 sq ft

Second Floor

1 Living / Kitchen / Dining 6.02 x 5.43M 19'7" x 17'8"	2 Bedroom 3.36 x 3.59M 11'0" x 11'7"	3 Bedroom 2.46 x 3.59M 8'0" x 11'7"	4 Balcony 2.03 x 1.13M 6'6" x 3'7"
--	--	---	--



Floorplan produced for Tavistock Bow. Illustration for identification purposes only and not to scale. All measurements are approximate and not to be relied upon.



floorplans

22 Parker Street | Apt. 2

second floor | 1 bed

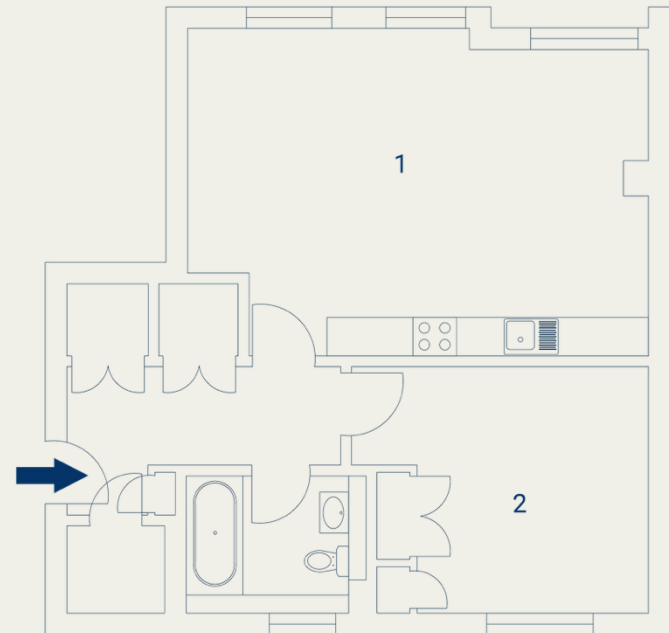
Ruspini House, WC2B

Approximate Gross Internal Area 58 sq m / 624 sq ft

Second Floor

1 Living /
Kitchen /
Dining
6.16 x 4.52M
20'2" x 14'8"

2 Bedroom
4.03 x 3.31M
13'2" x 10'8"



Floorplan produced for Tavistock Bow. Illustration for identification purposes only and not to scale. All measurements are approximate and not to be relied upon.



floorplans

22 Parker Street | Apt. 3

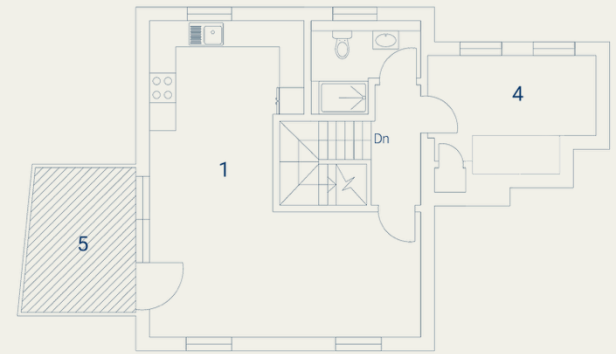
third/fourth floor | 3 bed

Ruspini House, WC2

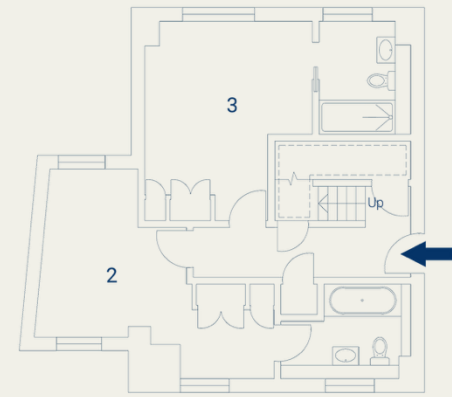
Approximate Gross Internal Area 104 sq m / 1119 sq ft
Excluding External Balcony of 7 sq m / 75 sq ft



1 Living / Kitchen / Dining 5.95 x 7.33M 19'5" x 24'0"	2 Bedroom 5.51 x 4.04M 18'0" x 13'2"	3 Bedroom 4.52 x 3.76M 14'8" x 12'3"	4 Bedroom 3.86 x 3.00M 12'6" x 9'8"	5 Balcony 2.45 x 3.09M 8'0" x 10'1"
--	--	--	---	---



Fourth Floor



Third Floor

Floorplan produced for Tavistock Bow. Illustration for identification purposes only and not to scale. All measurements are approximate and not to be relied upon.



floorplans

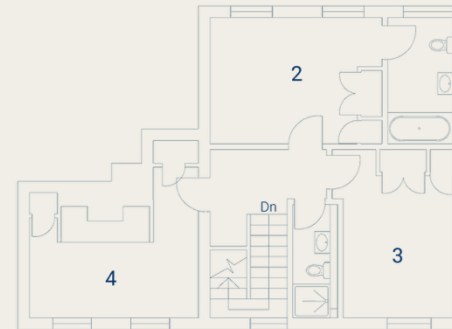
22 Parker Street | Apt. 4

third/fourth floor | 3 bed

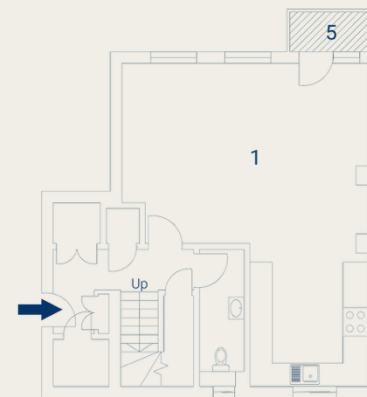
Ruspini House, WC2

Approximate Gross Internal Area 127 sq m / 1367 sq ft
Excluding External Balcony of 2 sq m / 21 sq ft

1 Living / Kitchen / Dining 6.16 x 7.90M 20'2" x 25'9"	2 Bedroom 4.05 x 3.03M 13'2" x 9'9"	3 Bedroom 3.00 x 4.29M 9'8" x 14'0"	4 Bedroom 4.21 x 4.29M 13'8" x 14'0"	5 Balcony 2.24 x 1.05M 7'3" x 3'4"
--	---	---	--	--



Fourth Floor



Third Floor



Floorplan produced for Tavistock Bow. Illustration for identification purposes only and not to scale. All measurements are approximate and not to be relied upon.

Ruspini House is located within easy reach of several globally recognised centres for learning including The London School of Economics and King's College London, ideal for residents pursuing academic endeavours. The green open space of Lincoln's Inn Fields, London's largest public garden square, with its café & tennis courts, is just a short hop to the east across Kingsway.

A dazzling array of retail to rival Bond Street can be found in Covent Garden, not to mention numerous bars, cutting edge restaurants and world-class theatres. The cobbled streets of Seven Dials, with its fantastic indoor street food market and numerous boutiques from independent and established brands are just a short walk away.

The independent Garden Cinema is situated on the corner of Parker Street, and a former grain and seed store on Drury Lane has been completely re-imagined as restaurant brand Caravan's latest opening. The rooftop bar at hotel AMANO offers the perfect spot for sundowners, while Aram Store has been long established on Drury Lane as the go-to purveyor of contemporary designer furniture.

With excellent public transport links, including the Elizabeth Line at Tottenham Court Road, residents have excellent high speed travel connections to the City, Canary Wharf and Heathrow Airport. The Royal Courts of Justice, Waterloo Bridge and River Thames are all within a 10-minute walk.





prices & availability

Aug 2025

Ruspini House



| *tavistock*bow

prices & availability

Ruspini House

Apartment	Floor	Beds	Baths	Terrace / patio	Sq ft	Sq m	Rent per week
4 (PH)	3rd/4th	3	2	Terrace	1367	127	£1500
3 (PH)	3rd/4th	3	2	Terrace	1119	104	£1450
2	2nd	1	1	N/a	624	58	£675
1	2nd	2	1	Terrace	678	63	£795



*tavistock*bow

tavistockbow

about us

Tavistock Bow is an independent residential agency & consultancy based in London's vibrant West End.

We are niche, boutique, creative, knowledgeable, professional and approachable.

We love what we do and that's why we do it.



21 New Row
Covent Garden
London
WC2N 4LE

tavistockbow.com
020 7477 2177
hello@tavistockbow.com

Interior images are of the dressed show apartment*

MISREPRESENTATION ACT [COPYRIGHT] DISCLAIMER: Tavistock Bow Ltd for themselves and for the vendor(s) or lessor(s) of this property whose agents they are, give notice that: 1. These particulars do not constitute, nor constitute any part of, an offer or contract. 2. None of the statements contained in these particulars as to the property are to be relied on as statements or representations of fact. 3. Any intending purchaser or lessee must satisfy themselves by inspection or otherwise as to the correctness of each of the statements contained in these particulars. 4. The vendor(s) or lessor(s) do not make or give and neither Tavistock Bow Ltd nor any person in their employment has any authority to make or give any representation or warranty whatever in relation to this property. Finance Act 1989. Unless otherwise stated all prices and rents are quote exclusive of VAT. Property Misrepresentations Act 1991: These details are believed to be correct at the time of compilation but may be subject to subsequent amendment. ***only one apartment is proposed to be furnished.**

Connect with us on

