

first for homes

first for property in life - firstforhomes.co.uk

Contact Allan England's Team

01592 752 944



Laverock Terrace, Glenrothes

Offers over £119,995

Laverock Terrace, Glenrothes

Welcome To Laverock Terrace, A Bright & Spacious 3-Bedroom Terraced Villa Set Within The Popular Area of Dovecot, Glenrothes, Fife!

Allan England's award winning team at first for homes present to the market this lovely 3-bedroom terraced villa situated within the popular area of Dovecot, Glenrothes. The property forms an ideal first-time purchase / family home and offers bright and spacious living accommodation comprising: entrance hall, open plan lounge/diner with feature fireplace, large breakfasting kitchen with space for all appliances, stairs to the upper level offers 3 generous sized bedrooms and extended family bathroom with corner bath and separate shower. Externally there are easily maintained gardens to the front and rear. Ample street parking available. Convenient location within walking distance to schools, shops, doctors surgery and town centre. Early viewing is recommended to ensure you don't miss out!

HOME REPORT VALUE- £125,000

EPC RATING- C

COUNCIL TAX BAND- B

Call first for homes - first for trust... first for service... first for aftercare!

Glenrothes is regarded as one of the most successful Towns in Scotland with a wealth of local amenities including Kingdom Shopping Centre as well as sport and leisure at Michael Woods and a multi-screen cinema. Glenrothes boasts its very own 18-hole Golf course and both Primary and Secondary schooling are available. For the commuter the A92 allows swift access to Edinburgh and there are railway stations at both Thornton and Markinch.





SITUATION – Glenrothes

ENTRANCE HALLWAY

OPEN PLAN LOUNGE/DINER

19'4" x 10'4" (approx) (5.91m x 3.17m (approx))

BREAKFASTING KITCHEN

12'4" x 11'7" (approx) (3.78m x 3.54m (approx))

STAIRS TO UPPER LEVEL

BEDROOM 1

13'5" x 8'7" (approx) (4.09m x 2.63m (approx))

BEDROOM 2

10'5" x 9'6" (approx) (3.20m x 2.90m (approx))

BEDROOM 3

9'3" x 7'5" (approx) (2.82m x 2.27m (approx))

FAMILY BATHROOM

8'10" x 7'2" (approx) (2.71m x 2.19m (approx))

FRONT & REAR GARDENS

STREET PARKING

INFORMATION





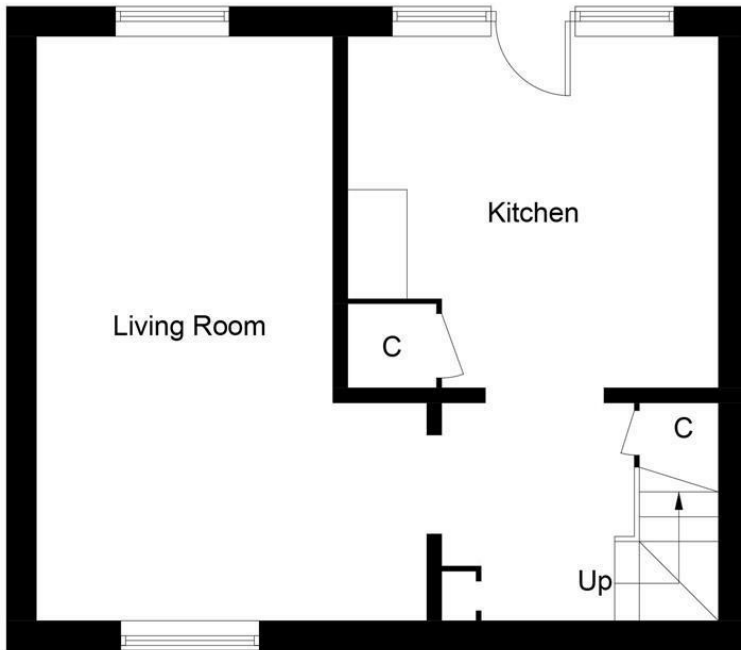
Information

These particulars are prepared on the basis of information provided by our clients. We have not tested the electrical system or any electrical appliances, nor where applicable, any central heating system. All sizes are recorded by electronic tape measurement to give an indicative, approximate size only. Prospective purchasers should make their own enquiries – no warranty is given or implied. This schedule is not intended to, and does not form any contract.

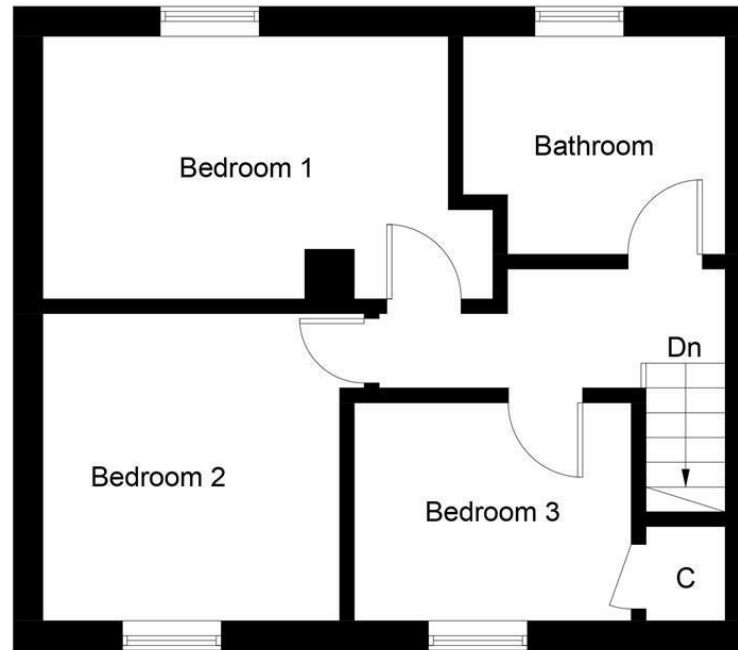
FREE Valuation

Selling Your Home?

Choose first for homes - a highly experienced estate agency team you can trust to sell your home at the highest possible price. Offering fantastic savings on selling fees, with no compromise on service, free professional photography highlighting your home in its best light, first for homes will be your first choice. Contact us today to arrange your appointment.



Ground Floor



First Floor

Illustration for identification purposes only, measurements are approximate, not to scale. Fourlabs.co © (ID1302627)



first for trust



first for service



first for aftercare

first for homes
first for property in life - firstforhomes.co.uk

Contact Allan England's Team
01592 752 944

32 North Street, Glenrothes, Fife KY7 5NA
Fax: 01592 807947
sales@firstforhomes.co.uk
www.firstforhomes.co.uk