



Alto, Sillavan Way, Salford

£1,150 PCM

Welcome to Alto: an ultra-modern development nestled in the nook of the river Irwell. Step inside and you will see this lovely two double-bedroom apartment, with a contemporary design that stays bright, even under the grey skies of Manchester.

You will have the comfort of new, high-quality furnishings. And the open-plan kitchen/lounge has plenty of space for all your get-togethers, gatherings, shindigs and lazy Sundays. There is a large master bathroom, and for those who like a bit more privacy, there is an ensuite in one of the rooms too. So no early-morning queues.

Just down the road are Spinningfields swanky bars and shops, and beyond that is the city centre itself. And if you are planning a longer excursion you won't have to go far: Salford Central train station is close by.

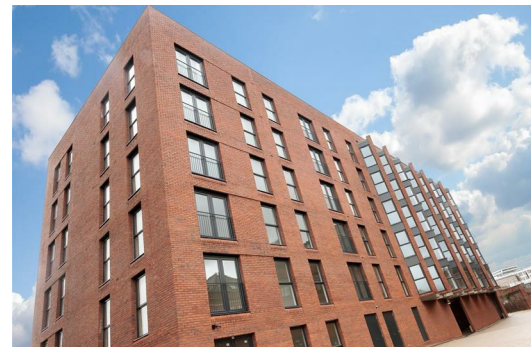
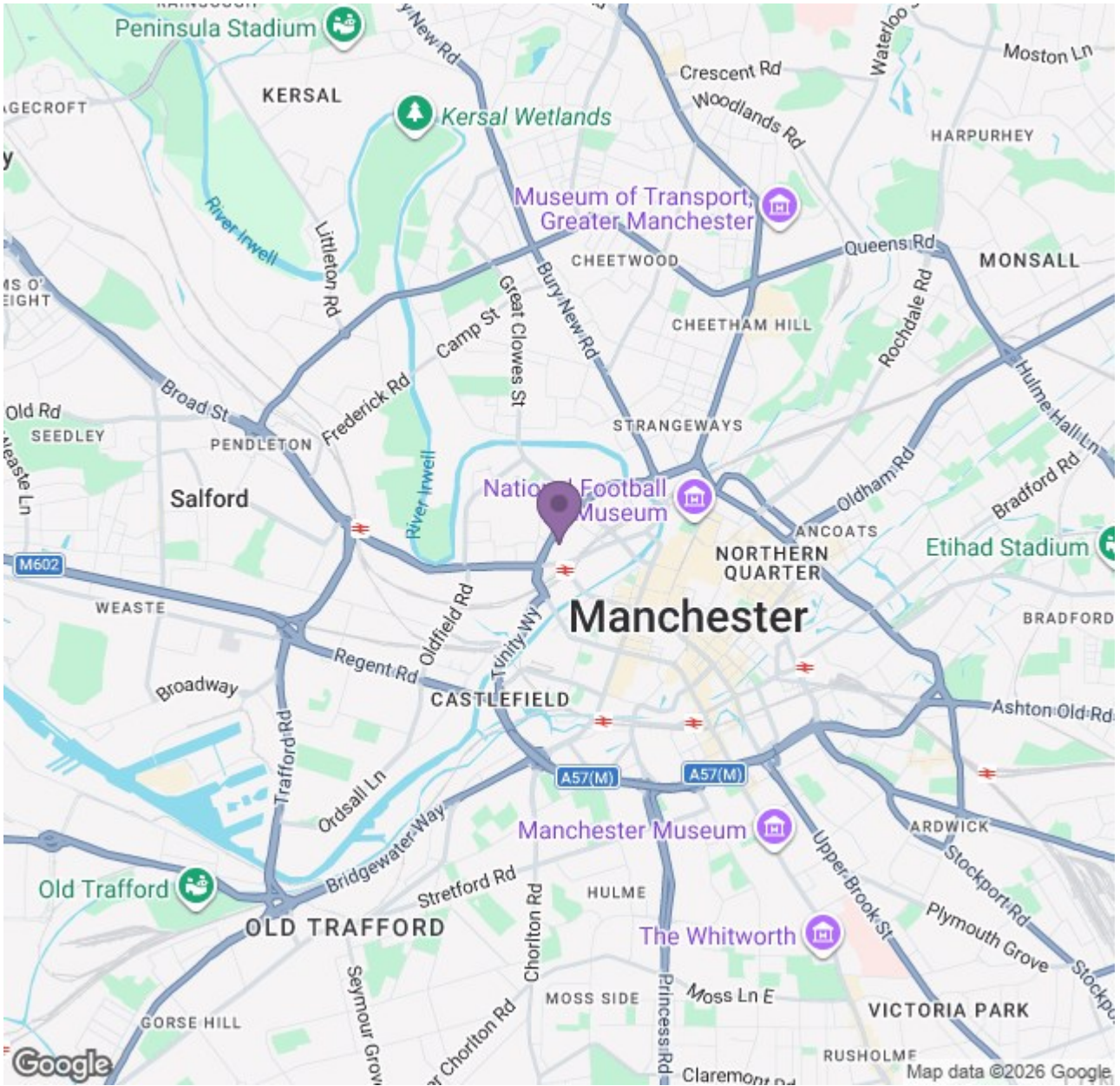
If you are interested in having a closer look, or have any questions, do get in touch. And just so you know, the pictures for this apartment are for marketing purposes only, so the internal fixtures, fittings and furnishings may vary.

Available 16th June 2026
Deposit £1,320
Council Tax Band: B
Furnished



Ascend

Built on higher standards



Energy Efficiency Rating		Environmental Impact (CO ₂) Rating	
Current	Target	Current	Target
Energy Efficiency: G	Energy Efficiency: C	Environmental Impact: E	Environmental Impact: B
Energy Efficiency: G	Energy Efficiency: C	Environmental Impact: E	Environmental Impact: B

Ascend

Built on higher standards