

HS HAIR & SON

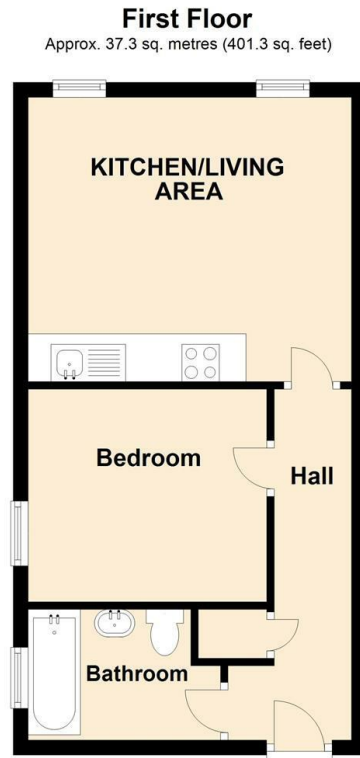


Milton Road , Westcliff-on-Sea SS0 7JX

- FIRST FLOOR FLAT
- SECURE GATED ALLOCATED PARKING
- LONG LEASE
- BOILER SERVICED ANNUALLY
- WALKING DISTANCE TO WESTCLIFF TRAIN STATION
- ONE BEDROOM
- CONVERTED IN 2012
- WELL PRESENTED THROUGHOUT
- NO ONWARD CHAIN
- PERFECT FOR THOSE WHO ARE LOOKING TO GET ON THE PROPERTY LADDER

Guide Price £180,000 Leasehold

Local Authority **Southend on Sea Borough Council**
Council Tax Band **A**
EPC Rating



Total area: approx. 37.3 sq. metres (401.3 sq. feet)

Sales Office
190 London Road, Southend-On-Sea,
Essex, SS1 1PJ

Contact
01702 34 11 77
<https://hairandson.co.uk/>

Agents Note: Whilst every care has been taken to prepare these particulars, they are for guidance purposes only. All measurements are approximate and for general guidance purposes only and whilst every care has been taken to ensure accuracy, they should not be relied upon and potential buyers/tenants are advised to recheck the measurements.

