

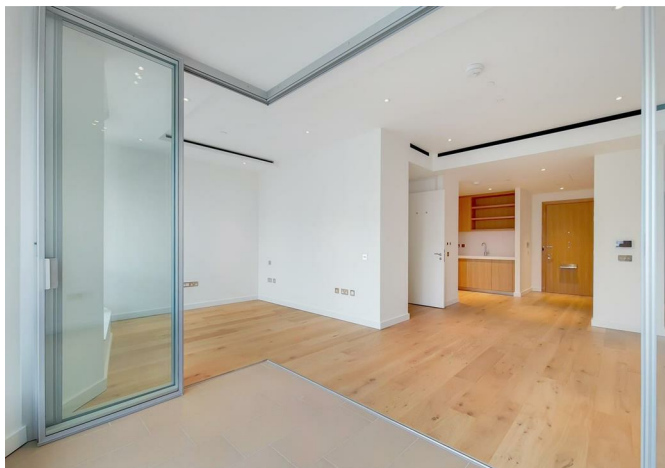


**LESSEL**



1007 Holmby House 2 Prospect Way, London, SW11 8DJ

**£699,500**



## 1007 Holmby House 2 Prospect Way, London, SW11 8DJ

**£699,500**

This studio apartment is located on the 10th floor of the iconic Battersea Power Station development.

Just a 3-minute walk to Battersea Power Station Underground (Northern Line) and situated next to the Power Station, residents enjoy convenient transport connections and a wide range of shops, restaurants, and entertainment right on their doorstep.

The open-plan living space is bright and versatile, offering a comfortable setting for both work and relaxation. The Winter Garden provides a semi-enclosed outdoor area, ideal for enjoying fresh air and natural light.

The kitchen is fully fitted with high-quality integrated appliances and sleek modern cabinetry. The bathroom is finished with contemporary fittings and a clean style.

As part of the Battersea Power Station development, residents have access to a range of on-site amenities, including: 24-hour concierge, lounge space, library area, meeting rooms, private dining area, screening room, fitness facilities

This apartment is ideal for professionals, investors, or anyone seeking a well-designed home in a landmark central London location.

## Description



## Situation

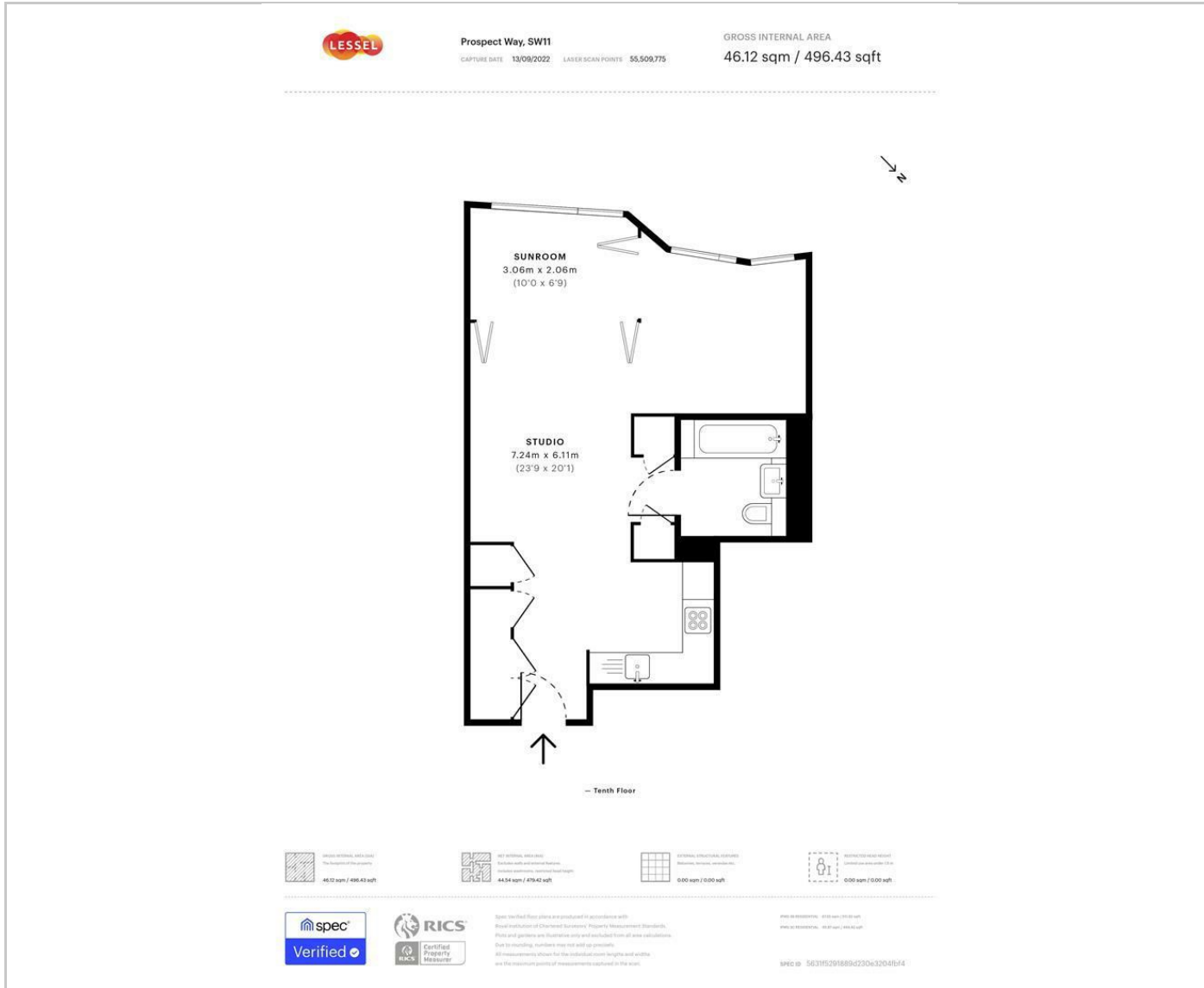


null

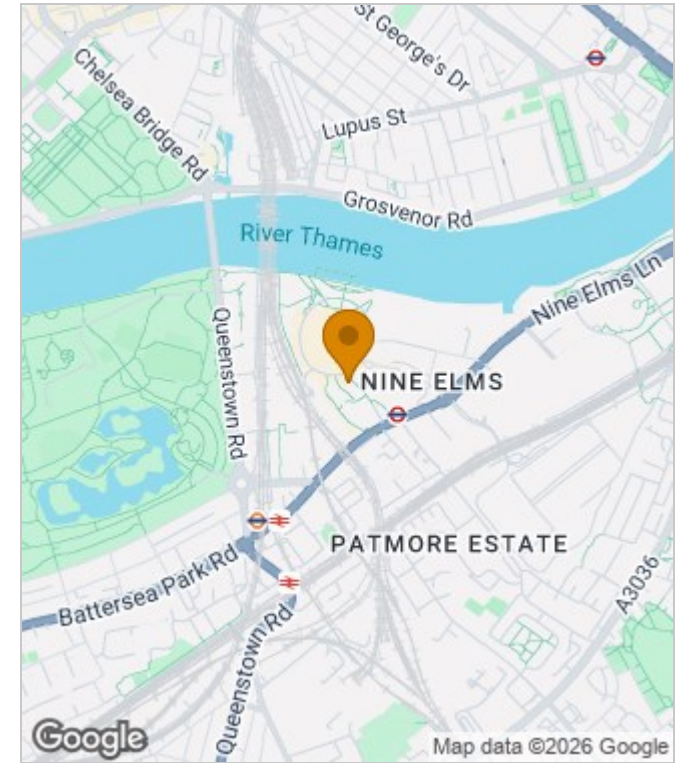
Council Tax Band: E

Available:

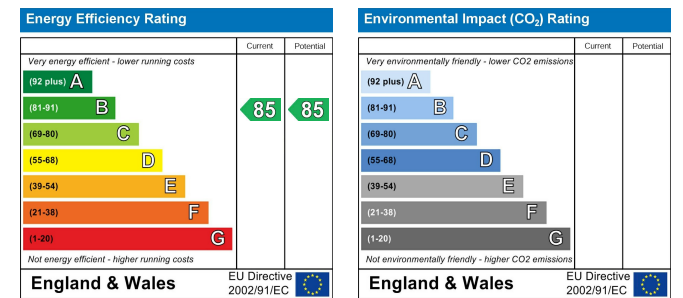
# Floor Plans



# Area Map



# Energy Performance Graph



These particulars, whilst believed to be accurate are set out as a general outline only for guidance and do not constitute any part of an offer or contract. Intending purchasers should not rely on them as statements of representation of fact, but must satisfy themselves by inspection or otherwise as to their accuracy. No person in this firm's employment has the authority to make or give any representation or warranty in respect of the property.