



Grizedale Court, Seaburn Dene, SR6

HUNTERS[®]
HERE TO GET *you* THERE

Grizedale Court, Seaburn Dene, SR6

Asking Price £330,000

* PLEASE VIEW VIRTUAL TOUR AND FLOOR PLAN * 4 BEDROOM * EN-SUITE * FREEHOLD * SEABURN DENE * COUNCIL TAX BAND B
* EPC RATING D *

This four-bedroom semi-detached house is for sale in Grizedale, Seaburn Dene. The ground floor features a spacious reception room with large windows and a wood-burning stove. An open-plan kitchen forms the heart of the home, with a stunning kitchen island, wood countertops, generous dining and breakfast areas, and excellent natural light. The kitchen offers direct access to the attractive garden, providing a practical layout for everyday living. A downstairs WC adds further convenience.

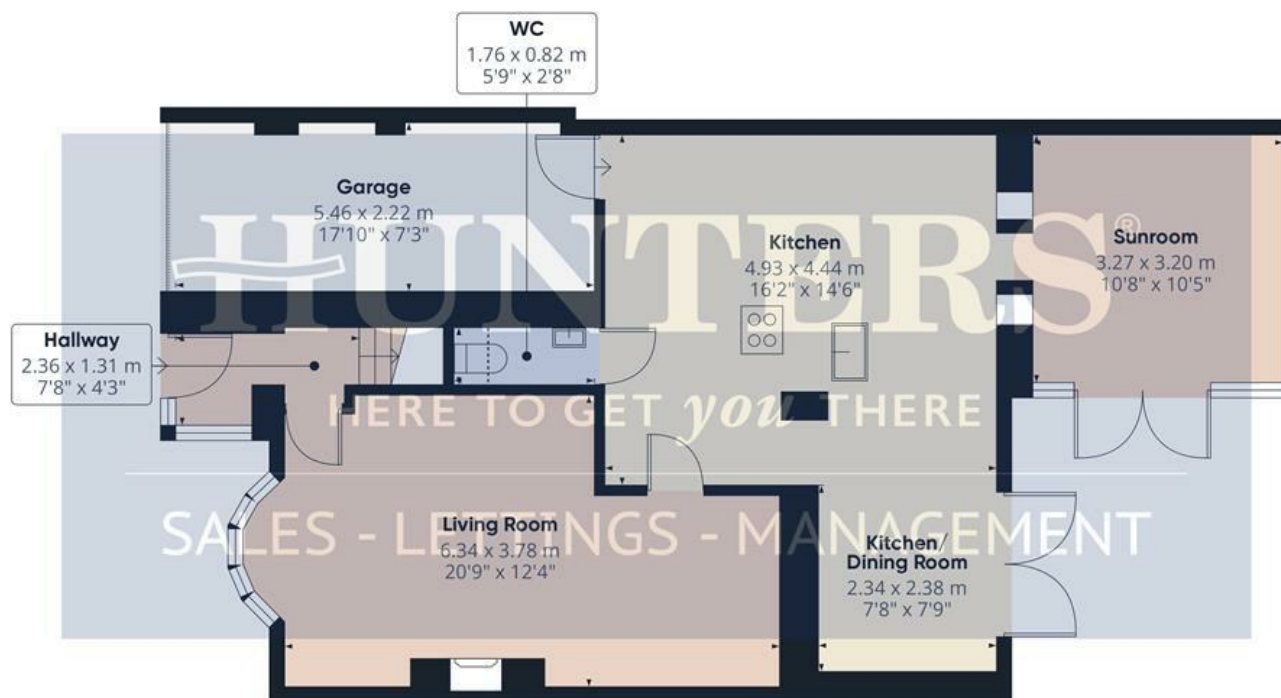
Upstairs, the master bedroom includes an en-suite shower room, built-in wardrobes and large windows. There are two additional double bedrooms, one with built-in wardrobes, and a single bedroom, also with built-in wardrobes, offering flexible accommodation for families. The main bathroom includes built-in storage, a large bath, a modern suite and a heated towel rail.

Externally, the property benefits from an attractive garden, parking and a single garage.

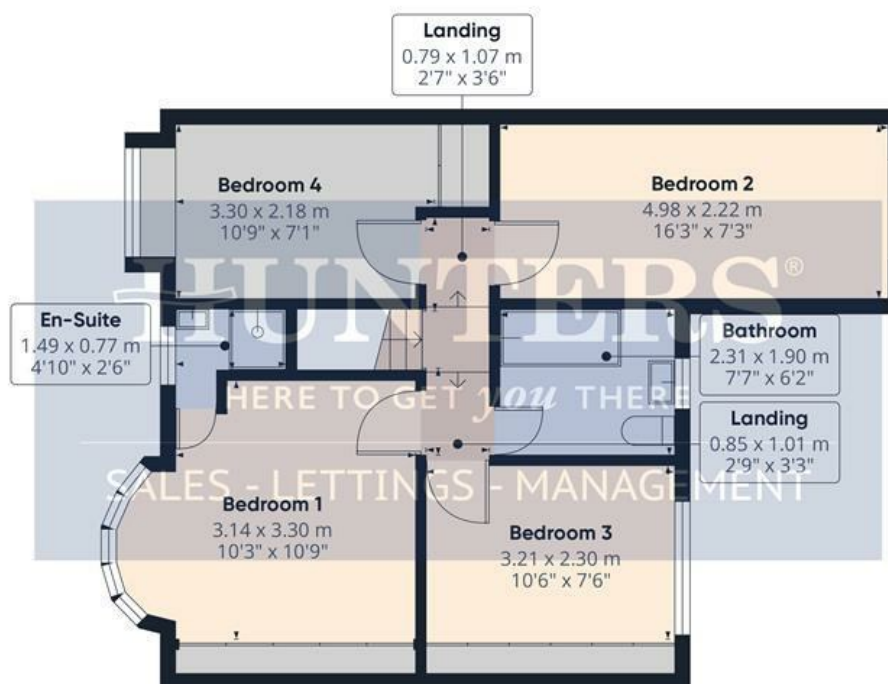
The location provides access to local amenities including shops, cafés and services in nearby Seaburn and Fulwell. Roker and Seaburn beaches, along with local green spaces and coastal walks, are within easy reach, offering leisure opportunities and outdoor recreation.

Nearby schools in the wider area include a range of primary and secondary options, supporting the property's suitability for families. Overall, this semi-detached four-bedroom house for sale offers well-arranged accommodation, outdoor space and practical access to transport, schools and coastal amenities.

Hunters Sunderland 11b Sea Road, Fulwell, Sunderland SR6 9BP | 0191 594 7788
sunderland@hunters.com | www.hunters.com



Floor 0



Floor 1

Approximate total area⁽¹⁾

125.7 m²

1353 ft²

Reduced headroom

0.3 m²

3 ft²

(1) Excluding balconies and terraces

Reduced headroom

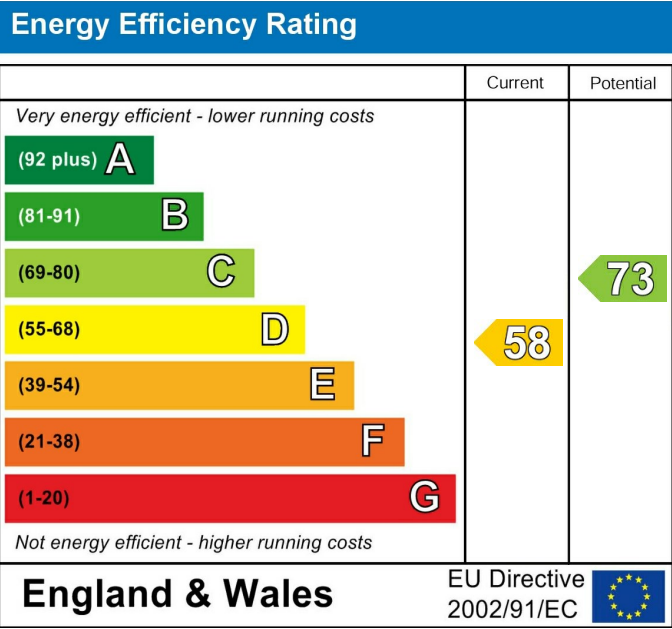
..... Below 1.5 m/5 ft

Calculations reference the RICS IPMS 3C standard. Measurements are approximate and not to scale. This floor plan is intended for illustration only.

GIRAFFE360



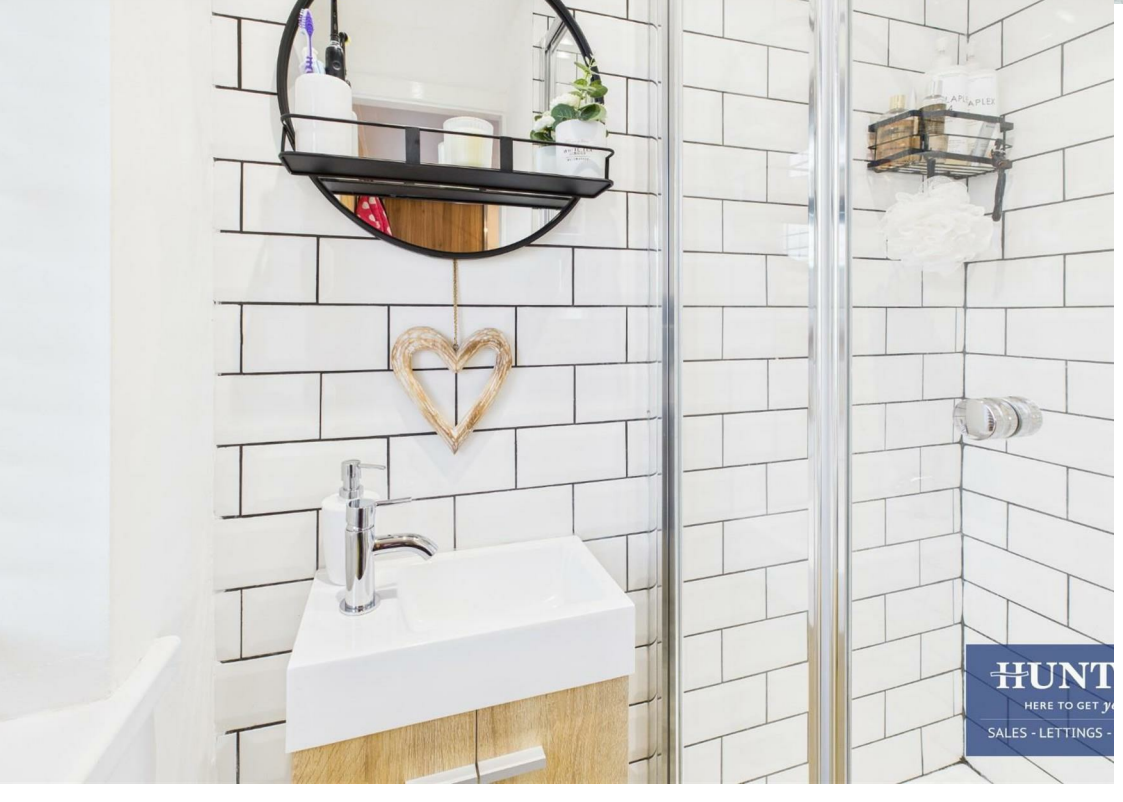
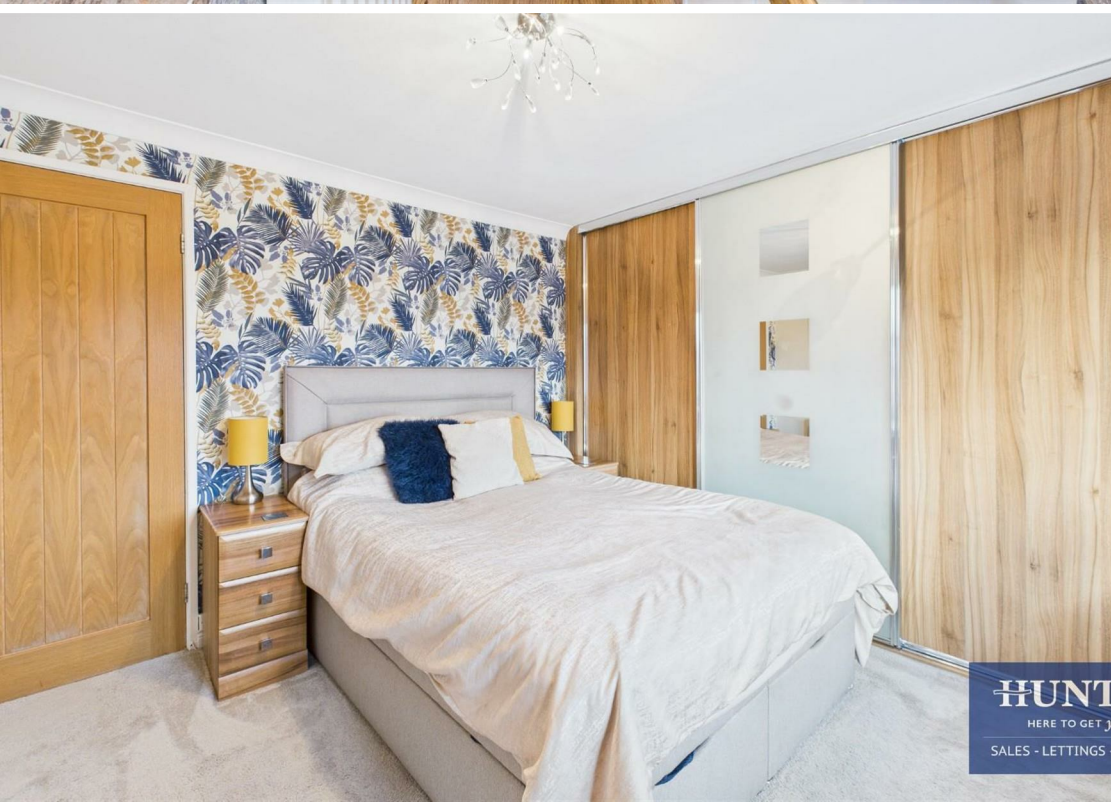
- Hallway**
7'8" x 4'3"
- Living Room**
20'9" x 12'4"
- Kitchen**
16'2" x 14'6"
- Kitchen Dining Room**
7'8" x 7'9"
- Sunroom**
10'8" x 10'5"
- WC**
5'9" x 2'8"
- Landing**
2'7" x 3'6"
- Landing**
2'9" x 3'3"
- Bedroom 1**
10'3" x 10'9"
- En-Suite**
4'10" x 2'6"
- Bedroom 2**
16'4" x 7'3"
- Bedroom 3**
10'6" x 7'6"
- Bedroom 4**
10'9" x 7'1"
- Bathroom**
7'6" x 6'2"



These particulars are intended to give a fair and reliable description of the property but no responsibility for any inaccuracy or error can be accepted and do not constitute an offer or contract. We have not tested any services or appliances (including central heating if fitted) referred to in these particulars and the purchasers are advised to satisfy themselves as to the working order and condition. If a property is unoccupied at any time there may be reconnection charges for any switched off/disconnected or drained services or appliances - All measurements are approximate. If you are thinking of selling your home or just curious to discover the value of your property, Hunters would be pleased to provide free, no obligation sales and marketing advice. Even if your home is outside the area covered by our local offices we can arrange a Market Appraisal through our national network of Hunters estate agents.











HUNT

HERE TO GET YOU

SALES - LETTINGS -