

Lugus HOMES



Nine Elms Lane, London

£4,500 Per month



Heating and hot water bills included in the rent.

This spacious three-bedroom apartment in the prestigious Riverside Court development offers stunning views of the River Thames and exceptional value in a prime South Bank location.

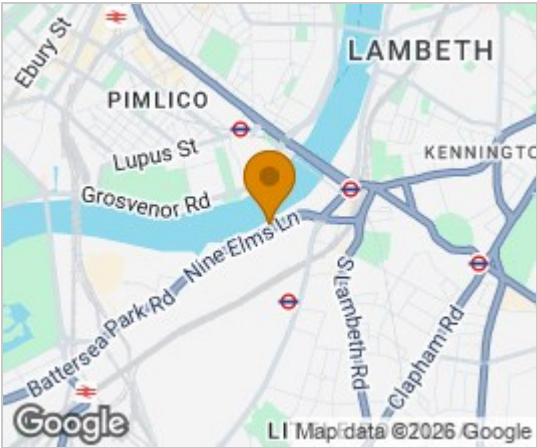
Extending to approximately 1,164 sq. ft., the apartment comprises three generous double bedrooms with built-in wardrobes, two modern bathrooms, a fully fitted kitchen, and a bright, expansive reception room that makes the most of the impressive riverside setting.

The property is offered fully furnished and benefits from a gated parking space as well as access to an on-site porter service.

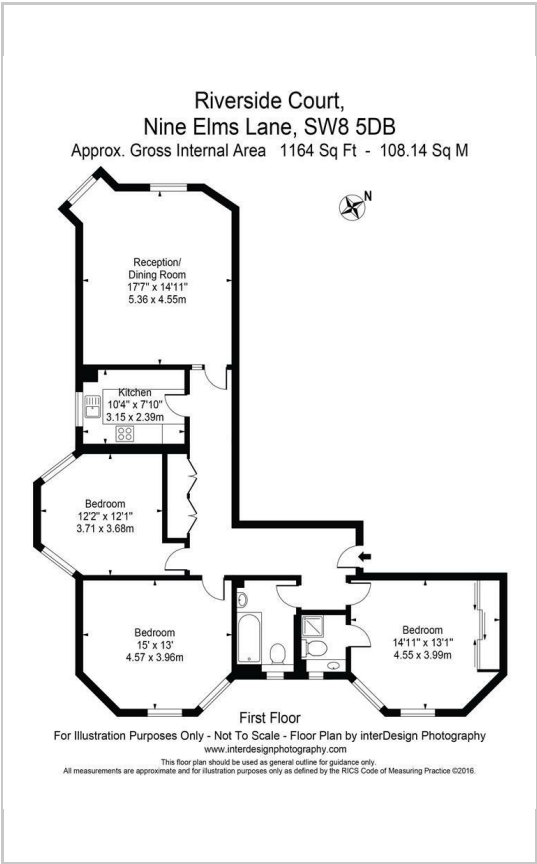
Ideally positioned for excellent transport links and local amenities, Riverside Court is just 0.4 miles from Vauxhall Station (Victoria Line & National Rail) and 0.5 miles from Nine Elms and Battersea Power Station stations (Northern Line), providing swift access to Central London, the City, and the West End.



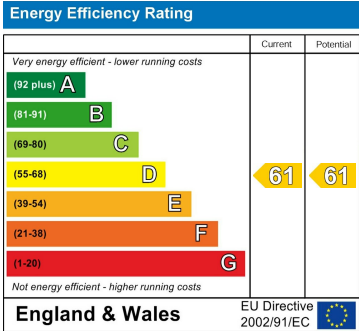
Area Map



Floor Plans



Energy Efficiency Graph



These particulars, whilst believed to be accurate are set out as a general outline only for guidance and do not constitute any part of an offer or contract. Intending purchasers should not rely on them as statements of representation of fact, but must satisfy themselves by inspection or otherwise as to their accuracy. No person in this firm's employment has the authority to make or give any representation or warranty in respect of the property.

24 Lower Downs Road, Raynes Park, London, SW20 8QG
 Tel: 07787 560885 Email: info@lugushomes.co.uk lugushomes.co.uk