



*Jordan fishwick*

Redhouse Lane Disley Stockport



## Redhouse Lane Disley Stockport SK12 2ER

Auction Guide £342,000



### The Property

\*\*\* FOR SALE BY AUCTION \*\*\* Bidding opens 15th April 10am and finishes 4pm \*\*\* A most charming and idyllic Grade II listed detached home. Backing onto fields and close to the Peak Forest Canal, this delightful and inspiring property has to be seen. Having undergone a comprehensive refurbishment in recent years and perfectly blends character with a modern convenience, no expense has been spared. Ideally placed for Disley Village and boasting beautiful gardens with off road parking. Comprising: living room, dining room, re-fitted kitchen, WC, rear porch, two generous first floor bedrooms, luxurious bathroom suite and additional garage providing a useful storage space, with plumbing and electricity. Underfloor and gas central heating, double glazing and useful double-chambered cellar area for additional storage. Viewing essential to appreciate this beautiful home.




- Charming Grade II Listed Detached
- Truly Unique and Iconic in Disley
- Delightful Position Adjoining Fields
- Convenient Location
- Superbly Renovated Throughout
- Energy Rating: D Council Tax Band: D
- Cottage Gardens and Off Road Parking
- Garage

**Postcode** SK12 2ER

**EPC Rating** D

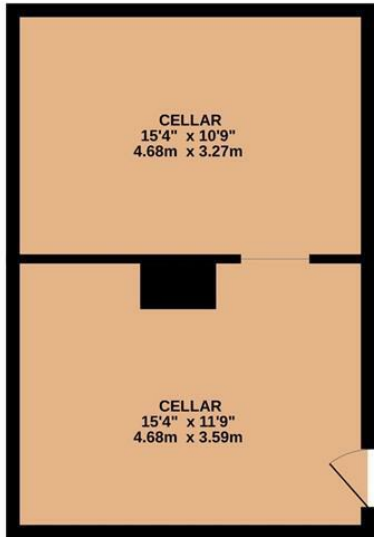
**Local Authority** Cheshire East

**Council Tax** D

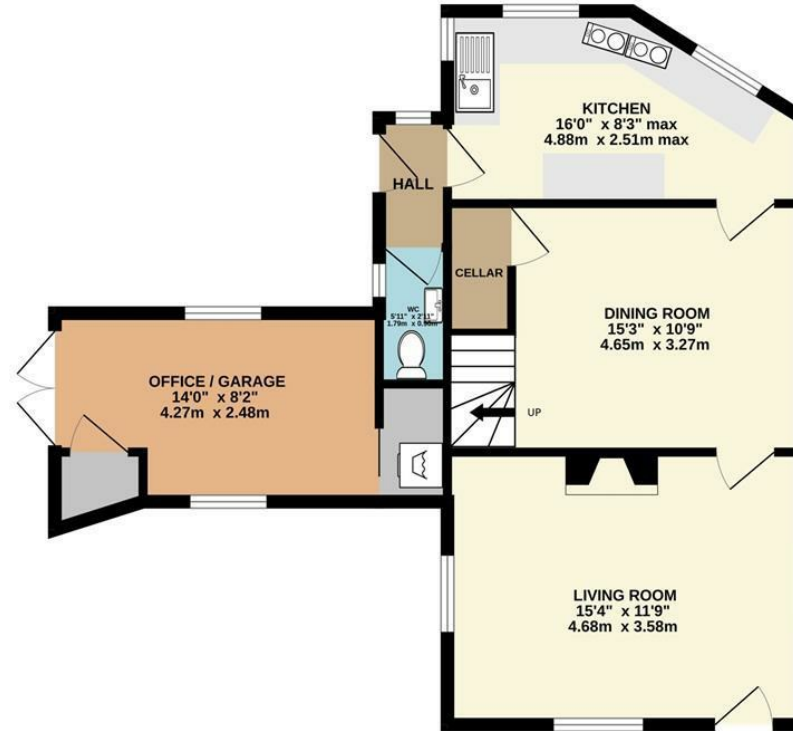
Energy Efficiency Rating		Current	Potential
Very energy efficient - lower running costs			
(92 plus) <b>A</b>			
(81-91) <b>B</b>			<b>83</b>
(69-80) <b>C</b>			
(55-68) <b>D</b>		<b>55</b>	
(39-54) <b>E</b>			
(21-38) <b>F</b>			
(1-20) <b>G</b>			
Not energy efficient - higher running costs			
<b>England &amp; Wales</b>		EU Directive 2002/91/EC 	



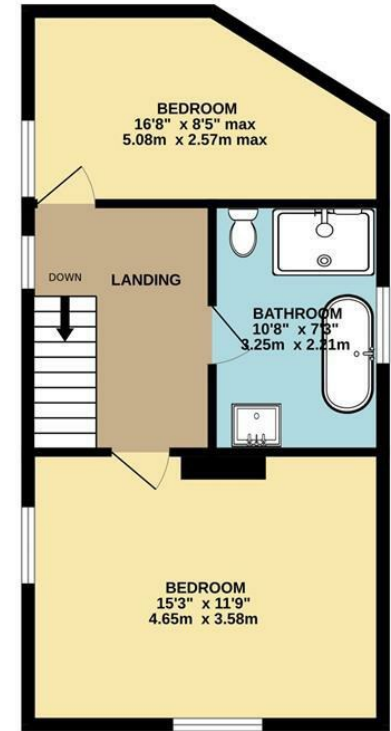
BASEMENT



GROUND FLOOR



1ST FLOOR



Whilst every attempt has been made to ensure the accuracy of the floorplan contained here, measurements of doors, windows, rooms and any other items are approximate and no responsibility is taken for any error, omission or mis-statement. This plan is for illustrative purposes only and should be used as such by any prospective purchaser. The services, systems and appliances shown have not been tested and no guarantee as to their operability or efficiency can be given.  
 Made with Metropix ©2024



These particulars are believed to be accurate but they are not guaranteed and do not form a contract. Neither Jordan Fishwick nor the vendor or lessor accept any responsibility in respect of these particulars, which are not intended to be statements or representations of fact and any intending purchaser or lessee must satisfy himself by inspection or otherwise as to the correctness of each of the statements contained in these particulars. Any floorplans on this brochure are for illustrative purposes only and are not necessarily to scale.

Offices at: Chorlton, Didsbury, Disley, Hale, Glossop, Macclesfield, Manchester Deansgate, Manchester Whitworth Street, New Mills, Sale, Wilmslow and Withington

14 Market St, Disley, Cheshire, Stockport SK12 2AA

01663 767878

disley@jordanfishwick.co.uk

www.jordanfishwick.co.uk