



69 Church Street, Billericay - CM11 2SX

£770,000 Freehold

This beautifully designed four-bedroom detached home, built in 2016 and offering approximately 1,926 square feet of thoughtfully arranged accommodation, is perfect for modern family living.

Council Tax band: F Tenure: Freehold

EPC Energy Efficiency Rating: B EPC Environmental Impact Rating: B



tyler estates

01277 626181

www.tylerestates.co.uk



Entrance Hallway

Lounge/Diner

24' 3" x 11' 9" (7.39m x 3.58m)

Kitchen/Family Room

23' 5" x 15' 7" (7.13m x 4.74m)

Utility Room

7' 2" x 7' 0" (2.18m x 2.13m)

Cloakroom

Landing

Bedroom One

13' 8" x 12' 7" (4.16m x 3.83m)

En-suite

Bedroom Two

17' 0" x 13' 10" (5.18m x 4.21m)

En-suite

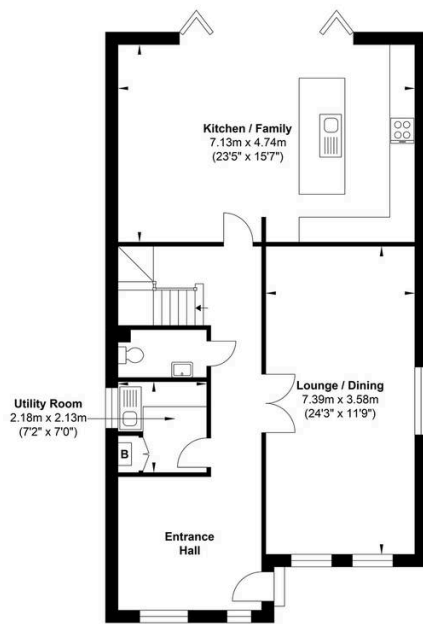
Bedroom Three

13' 8" x 10' 5" (4.16m x 3.17m)

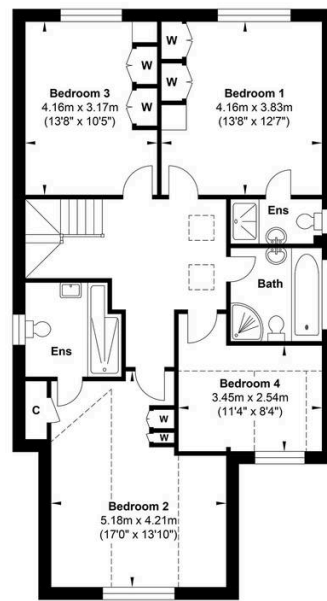
Bedroom Four

11' 4" x 8' 4" (3.45m x 2.54m)

Bathroom



Ground Floor



First Floor

Gross Internal Floor Area : 178.94 m2 ... 1926.0 ft2

Whilst every attempt has been made to ensure the accuracy of the floor plan contained here, measurements of doors, windows, rooms and any other items are approximate and no responsibility is taken for any error, omission, or mis-statement. This plan is for illustrative purposes only and should be used as such by any prospective purchaser. The services, systems and appliances shown have not been tested and no guarantee as to their operability or efficiency can be given.