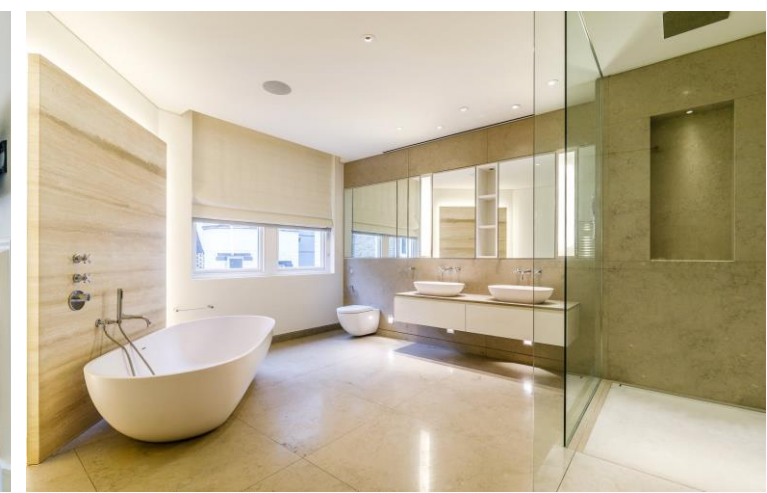




Duke Street
Mayfair, W1K

CHESTERTONS





Luxury three bedroom three bathroom apartment on the second floor with lift and porter within an attractive refurbished period building located within walking distance to all local amenities of Mayfair.

- Three Bedrooms
- Three Bathrooms
- Day Concierge
- Lift
- Modern
- Excellent Location

£25,566.67 pcm

Additional tenant charges apply (fees apply to non-AST tenancies only)

Tenancy Agreement Fee: £300

References per Tenant/Guarantor: £60

Inventory check (approx. £100 – £250 inc. VAT)

chestertons.co.uk/property-to-rent/applicable-fees

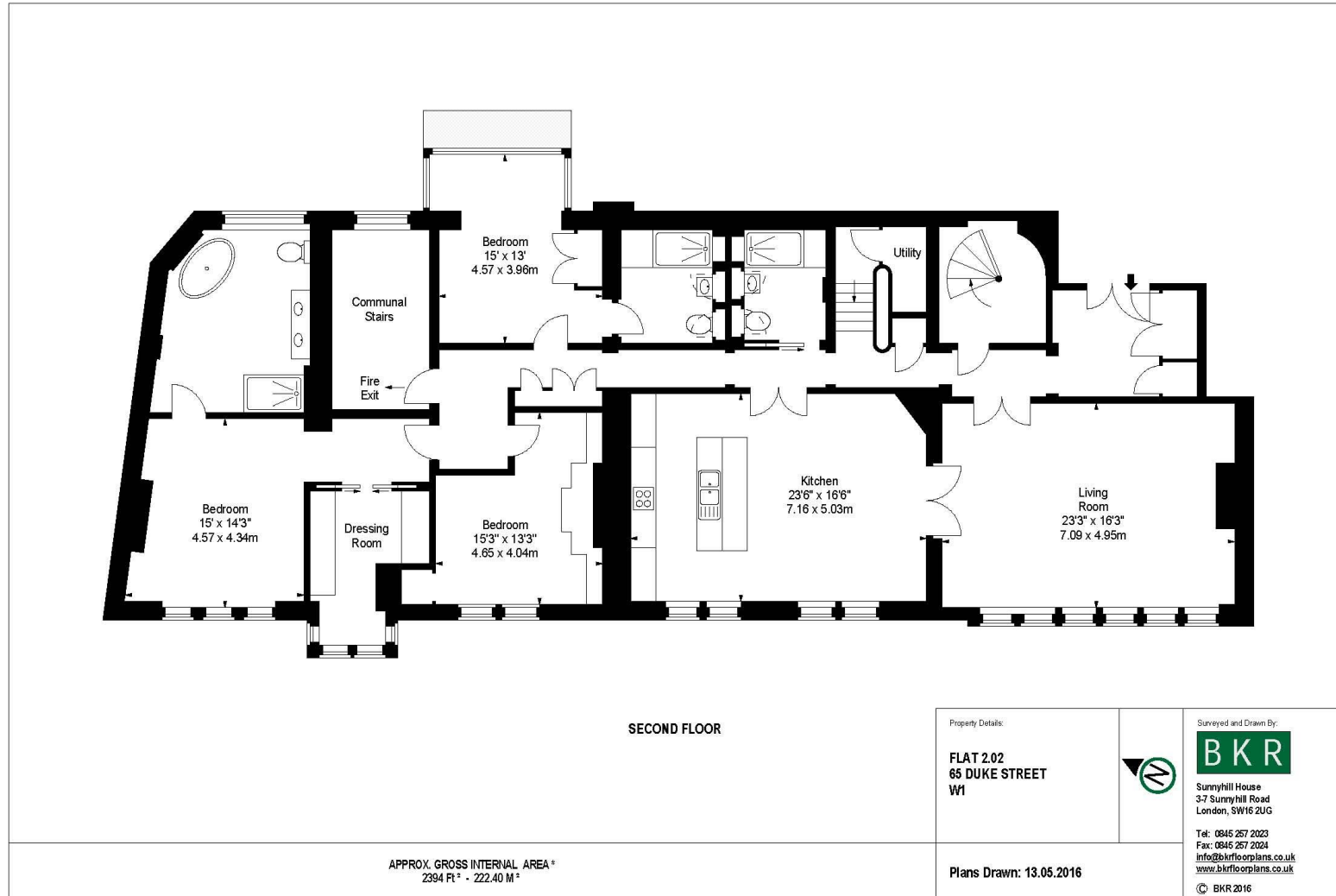
Energy Efficiency Rating		Current	Potential
Very energy efficient - lower running costs			
(90-100) A			
(81-90) B			
(69-80) C			
(55-68) D		66	66
(39-54) E			
(21-38) F			
(1-10) G			
Not energy efficient - higher running costs			
England, Scotland & Wales		EU Directive 2002/91/EC	

Minimum Term: 12 months
Deposit Required: £35,400.00
Local Authority: City of Westminster
Council Tax Band: H
EPC Rating: C
Furnished

Chestertons Mayfair Lettings

47 South Audley Street
 Mayfair
 London
 W1K 2QA

mayfairlettingsusers@chestertons.co.uk
 020 7288 8301



Chesterton UK Services Limited trading as Chestertons for themselves and for the vendor of this property whose agents they are, give notice that (i) these particulars do not constitute any part of an offer or contract, (ii) all statements contained within these particulars are made without responsibility on the part of Chestertons or the vendor, (iii) whilst made in good faith, none of the statements contained within these particulars are to be relied upon as a statement or representation of fact, (iv) any intending purchasers must satisfy themselves by inspection or otherwise as to the correctness of each of the statements contained within these particulars, (v) the vendor does not make or give either Chestertons or any person in their employment any authority to make or give representation or warranty whatsoever in relation to this property. Wide angle lenses may be used. ©Copyright Chestertons | Chesterton Global Ltd | Registered Office 40 Connaught Street, Hyde Park, London W2 2AB Registered Company Number 05334580.

