



**Guide Price**  
**£550,000**

**Freehold**

4x  2x  2x 

**Murray Way, Wickford,  
Essex, SS12**

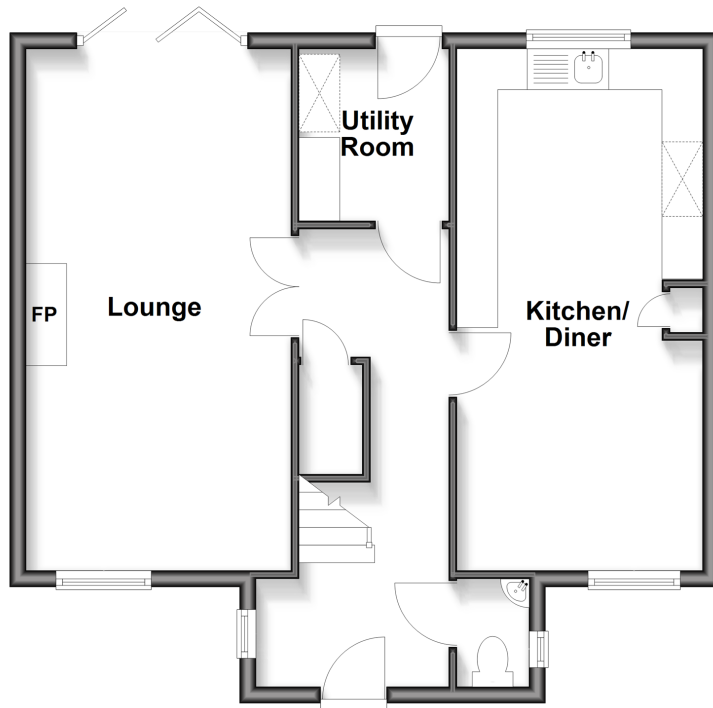
**OVER 60?**

Secure this property  
for up to **59% less!**

 **DOUGLAS  
ALLEN**  
Helping you move forwards

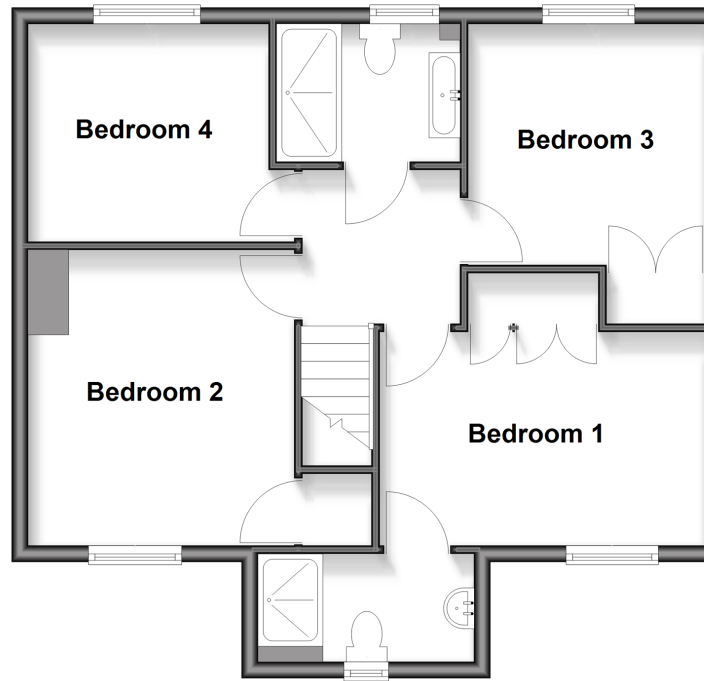
## Ground Floor

Approx. 57.8 sq. metres (622.5 sq. feet)



## First Floor

Approx. 56.8 sq. metres (611.8 sq. feet)



## Outbuilding 1

Approx. 12.2 sq. metres (131.4 sq. feet)



## Accommodation

### GROUND FLOOR

Entrance Hallway  
Lounge/Diner  
Kitchen  
Utility Room  
Cloakroom

### FIRST FLOOR

Landing  
Bedroom 1  
En-Suite  
Bedroom 2  
Bedroom 3  
Bedroom 4  
Family Shower Room

### OUTBUILDING

Garage

### OUTSIDE

Rear Garden  
Driveway





## Main features

- Immaculate condition throughout
- Beautiful rear garden with a fantastic entertainment area
- Under floor heating in the kitchen/diner
- Ground floor cloakroom and utility room
- En-suite shower room
- Detached garage and off street parking
- Close to Oakfield and Abacus primary schools



### Nearest Schools

Primary Schools: Oakfield Primary 0.4 miles, Abacus Primary 1.0 miles, Wickford Junior School 1.2 miles

Secondary Schools: The Bromfords School 1.1 miles, Beauchamps High School 2.3 miles



### Transport Information

Train Stations: Wickford 1.3 miles, Battlesbridge 3.7 miles, Benfleet 4.2 miles



### Address

Murray Way, Wickford, Essex, SS12



### Directions

For directions to this property please contact us.





Call Wickford Branch 01268 561287 ■ [douglasallen.co.uk](https://douglasallen.co.uk)



- Legal advice should be taken to verify fixtures/fittings, planning, alterations and/or lease details
- Appliances & services are untested, dimensions are approximate and floor plans are not to scale
- Through a Homewise Home For Life Plan people aged 60+ can secure this property for up to 50% less, by purchasing a Lifetime Lease.



53413250/20251118/RP/BH