



Suffolk Street, SW1Y

£1,730 Per week

Dexters



Suffolk Street, SW1Y

A luxurious three bedroom, three bathroom apartment on the second floor of the gated brand new Hobhouse Court development designed by Arquitectonica with on site porter, air conditioning, communal courtyard, storage units and bicycle storage in an unrivalled prestigious location.

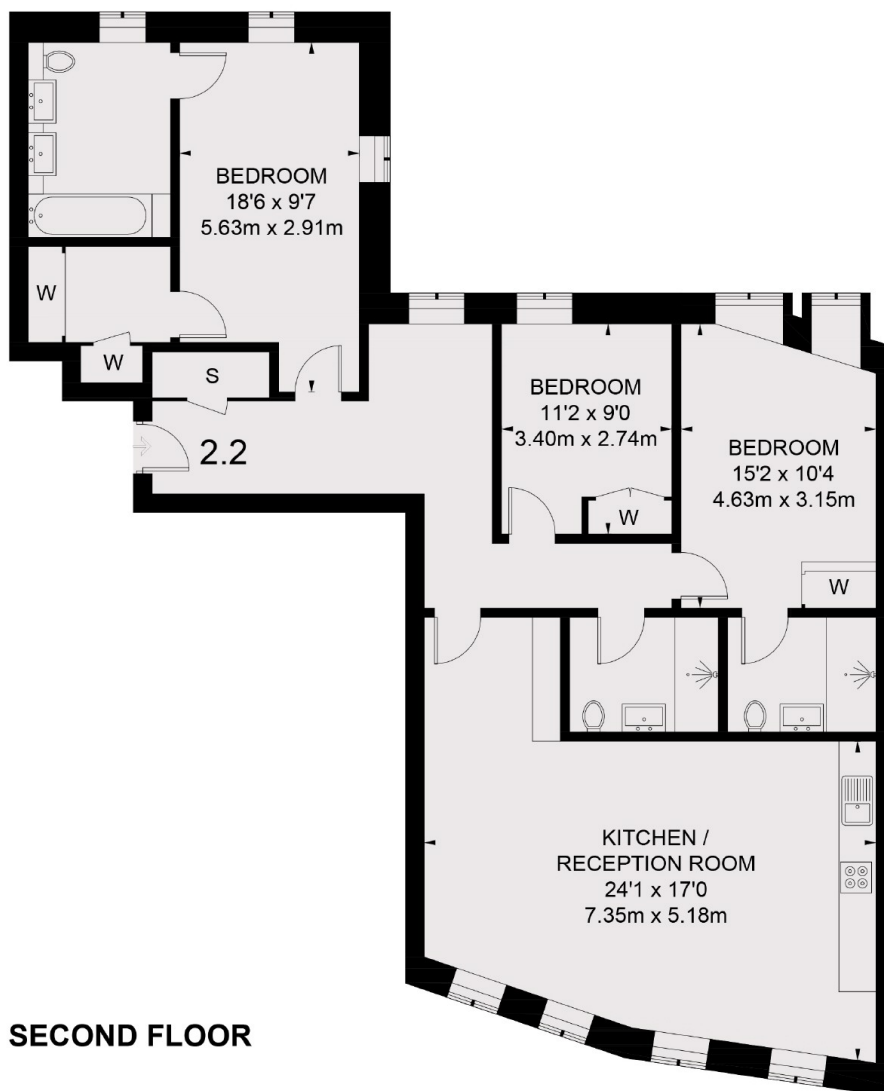
Hobhouse Court is located less than 50 meters from Trafalgar Square and is between Mayfair, Leicester Square and St James's Park. Leicester Square Station, Piccadilly Circus and Charing Cross Station are all located within walking distance of the development.

Features

- Unrivalled location
- Separate Storage Unit
- Bicycle Storage
- Comfort Cooling
- Concierge
- Gated Development



Suffolk Street, London, SW1Y



SECOND FLOOR

TOTAL APPROX. FLOOR AREA 1283 SQ. FT. (119.2 SQ. M.)