



The Hayloft Goblins Lane Abbey Green, Whixall, SY13 2PT

£1,100 PCM

Three-Bedroom Semi-Detached Barn Conversion in Whixall

Nestled in the peaceful rural setting of Whixall, this three-bedroom semi-detached barn conversion offers expansive and picturesque views of the Shropshire countryside.

The property is conveniently located just 5 miles from both Wem and Whitchurch, with easy access to Nantwich and Shrewsbury, each only a 30-minute drive away.

Accommodation comprises

- Cloakroom
- Lounge
- Dining Kitchen
- Utility Room
- Master Bedroom with En Suite
- Two Further Double Bedrooms
- Family Bathroom with shower over the bath

The property benefits from a generous garden and ample parking spaces and has been redecorated throughout.

Due to its location and setting, the property is not suitable for pets.

Viewing is highly recommended

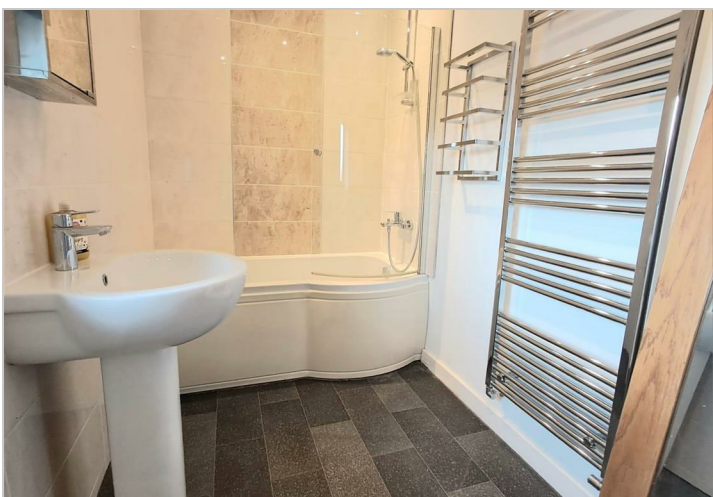
Rent excludes all utilities and is council tax band D

Viewing

Please contact our Wright Lettings & Management Office on 01270 216478

if you wish to arrange a viewing appointment for this property or require further information.





These particulars, whilst believed to be accurate are set out as a general outline only for guidance and do not constitute any part of an offer or contract. Intending purchasers should not rely on them as statements of representation of fact, but must satisfy themselves by inspection or otherwise as to their accuracy. No person in this firm's employment has the authority to make or give any representation or warranty in respect of the property.