



Price

£170,000

Leasehold

1x  1x  1x 

**Sandling Park, Sandling
Lane, Penenden Heath,
Maidstone, Kent ME14**

OVER 60?

Secure this property
for up to **59% less!**

Wards
Helping you move forwards



Main features

- **Stylish and spacious**
- **Stunning open plan lounge/kitchen diner leading out to a sunny garden**
- **Secure, private development with resident-only parking**
- **Walking distance to Maidstone town centre with excellent transport links nearby**
- **Perfect for first time buyers, investors, and professionals alike**

Accommodation

GROUND FLOOR

Lounge/Dining/Kitchen: 25'0 x 12'7 (7.63m x 3.84m)

Bedroom: 17'6 x 10'6 (5.34m x 3.20m)

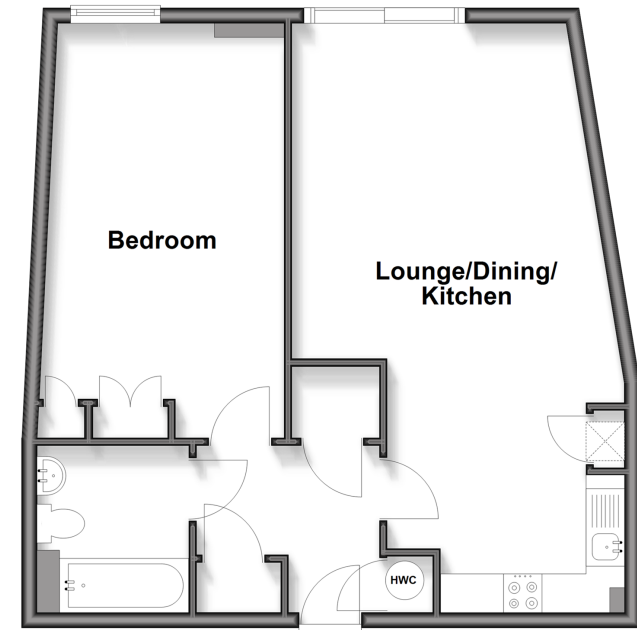
Bathroom

OUTSIDE

Allocated Parking

Communal Grounds

Ground Floor
Approx. 55.6 sq. metres (598.8 sq. feet)



Call Maidstone - 01622 683737 ■ wardsof Kent.co.uk

■ Legal advice should be taken to verify fixtures/fittings, planning, alterations and/or lease details
 ■ Through a Homewise Home For Life Plan people aged 60+ can secure this property for up to 50% less, by purchasing a Lifetime Lease.

■ Appliances & services are untested, dimensions are approximate and floor plans are not to scale



13158896/20250912/SS1/TB