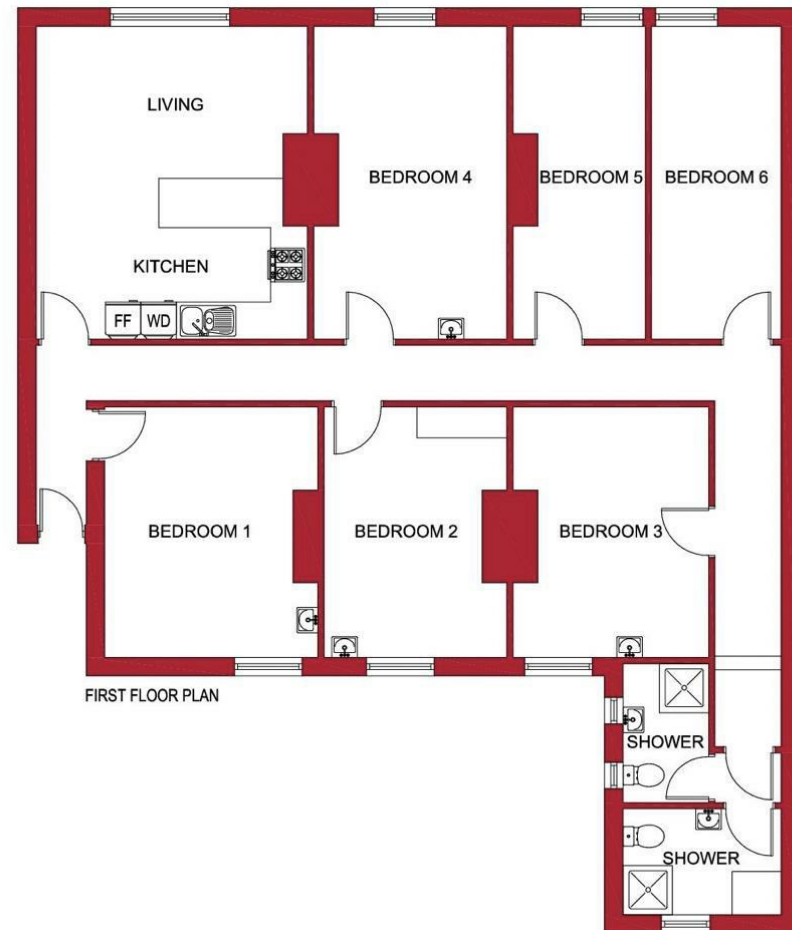




Viewings
 Viewings by arrangement only.
 Call 0114 2666300 to make an appointment.

Vendors Comments
 Add text here

Energy Efficiency Rating		Current	Potential
Very energy efficient - lower running costs			
(92 plus)	A		
(81-91)	B		
(69-80)	C	71	77
(55-68)	D		
(39-54)	E		
(21-38)	F		
(1-20)	G		
Not energy efficient - higher running costs			
England & Wales		EU Directive 2002/91/EC	



Room 6, 294A Ecclesall Road, Sheffield, S11 8PE

£110 Per week

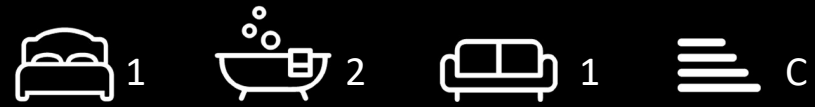
- £110 per week to include all bills
- Shared six bedroom property
- Excellent location on Ecclesall Road
- Ideal for students studying at Sheffield Hallam University
- Large double room available
- Two bathrooms
- Close to an abundance of local amenities
- EPC Grade C

Room 6, 294A Ecclesall Road, Sheffield S11 8PE

*** STUDENT *** £110 PER WEEK, TO INCLUDE ALL BILLS ***

LARGE DOUBLE BEDROOM in a SHARED, six bedroom property available to STUDENTS, with TWO BATHROOMS. A VERY WELL LOCATED, six bedroom APARTMENT close to an abundance of local amenities and situated in the HIGHLY SOUGHT AFTER location off ECCLESALL ROAD.

In brief the accommodation comprises: open plan lounge / kitchen, large double bedroom and two bathrooms. An early viewing is highly recommended to avoid disappointment!
EPC Grade C.



Council Tax Band: B

