



Flat 1, 75 Beresford Road, Prenton
£220,000 Leasehold





This beautiful ground floor apartment combines character, modern comfort, and a wealth of natural light. With its own private entrance, generous living space, and charming period features, it offers a rare blend of style and practicality, truly best appreciated with no onward chain.

Council Tax band: A

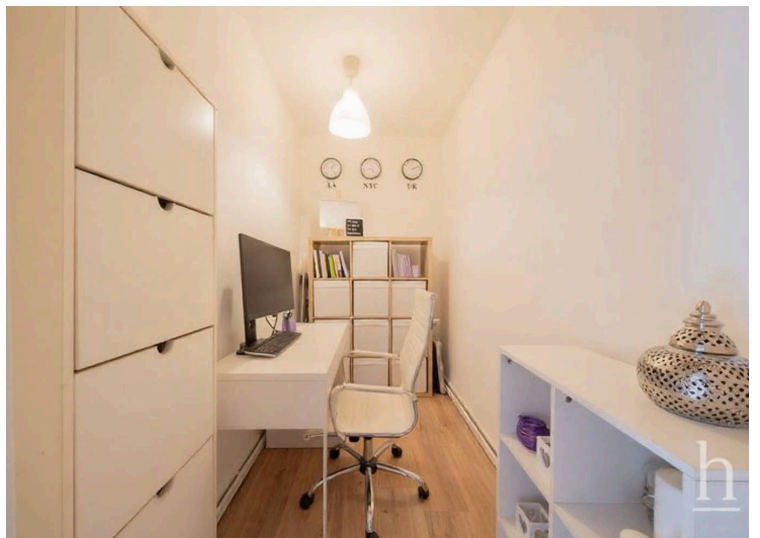
Tenure: Leasehold

EPC Energy Efficiency Rating: D

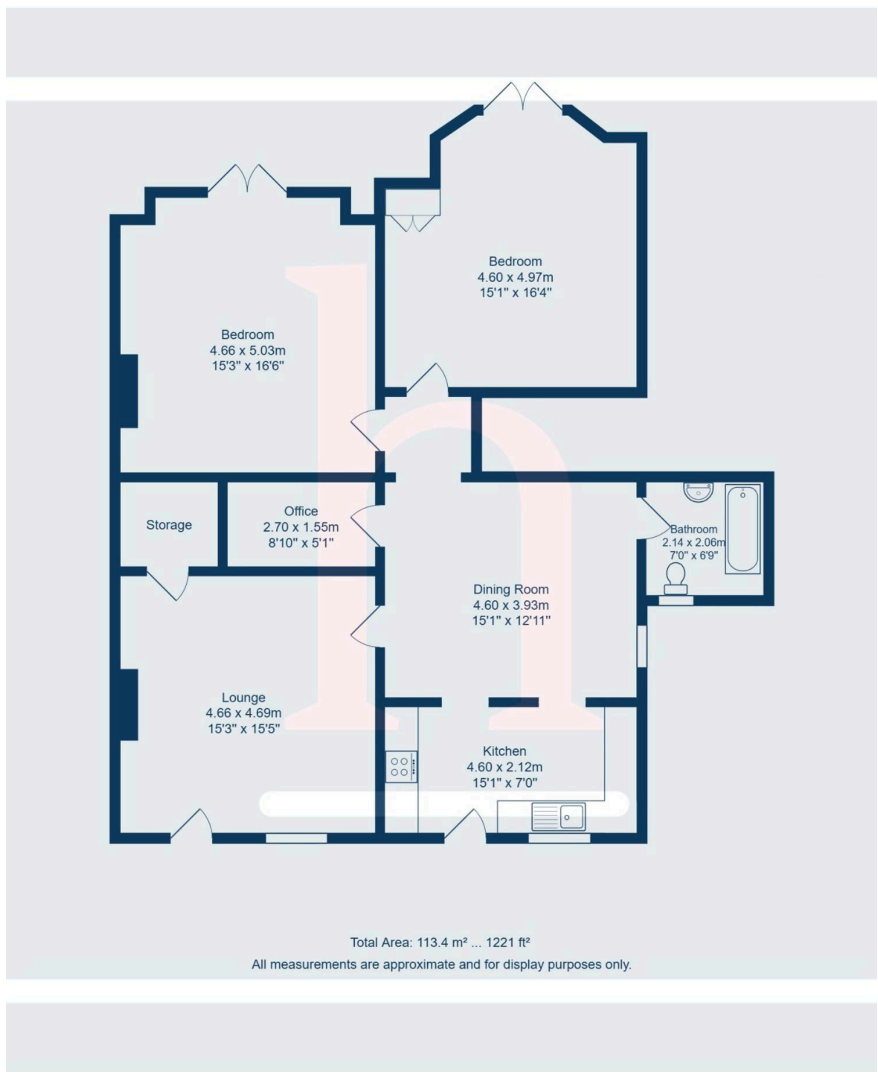
EPC Environmental Impact Rating: D

- Two double bedroom garden apartment
- Lounge
- Dining Room
- Fitted kitchen
- Family bathroom
- Parking
- Private entrance
- Private outdoor space
- No chain









You can include any text here. The text can be modified upon generating your brochure.