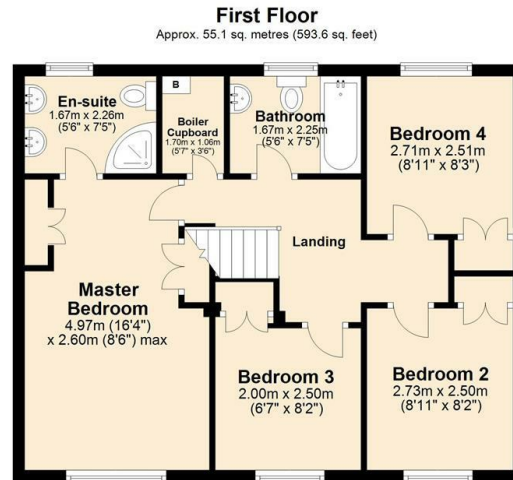
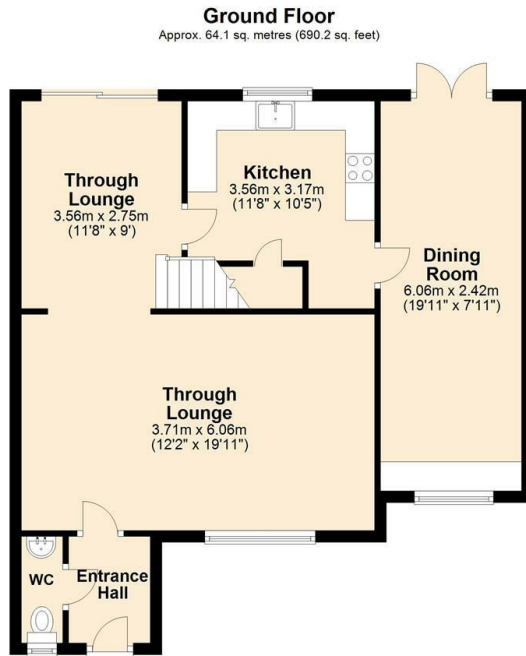




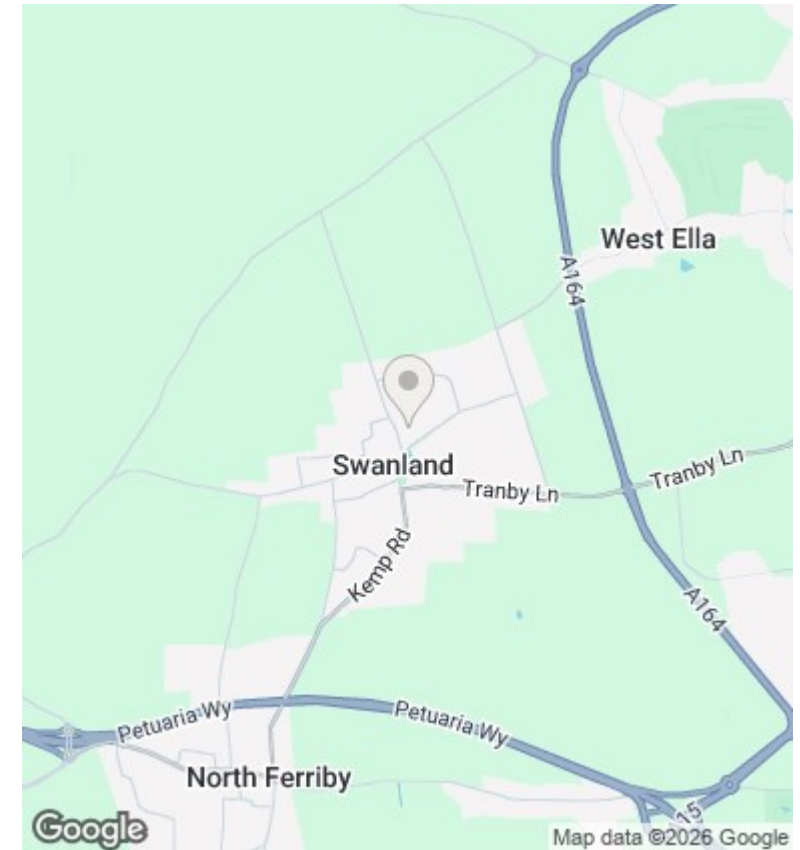
Cygnets View 11 Mere Way, Swanland, East Yorkshire, HU14

£1,695 PCM

- Modern Fitted Kitchen with Appliances
- Contemporary Family Bathroom Suite
- Recently Carpeted Throughout
- Located in the Sought After Village of Swanland
- Four Good Sized Bedrooms
- Ground Floor WC and Cloakroom
- Spacious Dining Room with French Doors Leading to Patio and Summer House. Utility Area with plumbing.
- Master Bedroom with His and Hers Ensuite
- Secure Rear Garden with Sun Trap Patio and Summer House
- Fast 7kw Electric Vehicle Charger with Two Dedicated Parking Spaces, Plus Additional On Street



Total area: approx. 119.3 sq. metres (1283.8 sq. feet)



Directions

Viewings

Viewings by arrangement only. Call 01482 307007 to make an appointment.

Council Tax Band

EPC Rating:

Energy Efficiency Rating		
	Current	Potential
<i>Very energy efficient - lower running costs</i>		
(92 plus) A		
(81-91) B		
(69-80) C		
(55-68) D		
(39-54) E		
(21-38) F		
(1-20) G		
<i>Not energy efficient - higher running costs</i>		
England & Wales	EU Directive 2002/91/EC	