



B BRIDGES
PROPERTIES
FOR SALE

27 Thomson Road, Armadale

Offers Over £340,000



27 Thomson Road

Armada

Positioned within the highly desirable Armada and Thomson Road area, this exceptional four bedroom home is a masterclass in refined design, meticulous upkeep and high spec super modern living. Every inch of the property has been thoughtfully curated and beautifully maintained, resulting in a home that feels both luxurious and effortlessly stylish, in true show home condition.

Upon entering, you are welcomed by a striking, expansive hallway fully tiled and bathed in natural light. The palette is neutral yet sophisticated, immediately setting the tone for the elegance that flows throughout. A standout feature is the stunning glass staircase, perfectly paired with rich oak detailing on the stairs, creating a bold statement that seamlessly blends contemporary design with warmth, setting the tone for the special home which awaits.

The lounge is nothing short of an incredible showpiece. Generously proportioned and impeccably styled, it offers a versatile layout with multiple seating areas, enhanced by recently upgraded designer radiators. A bespoke tiled feature wall with integrated flexible LED lighting adds depth and ambiance, while the dark panelled backdrop behind it introduces a dramatic contrast against the soft white and beige tones. The result is a space that feels both inviting and visually striking ideal for relaxing or entertaining in true style.

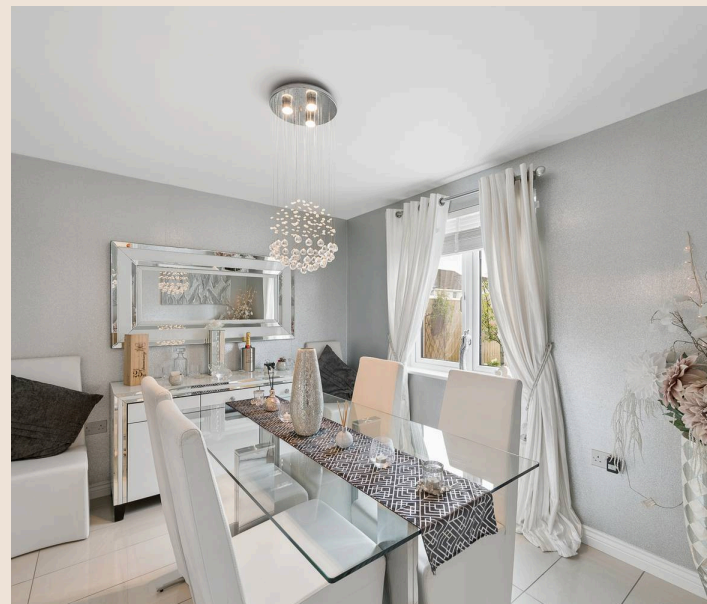
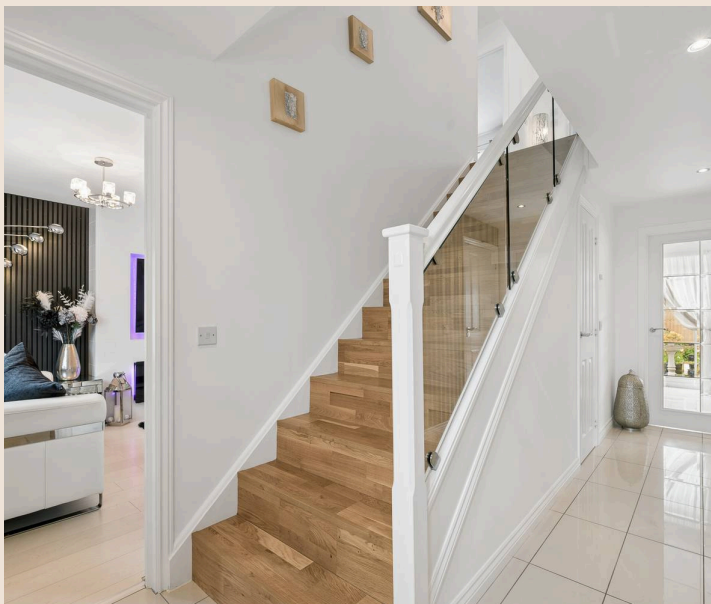
The dining area continues the luxurious feel. Spacious enough to host six to eight people comfortably, it showcases exquisite finishes, from the sleek tiled flooring to the carefully selected wall coverings and show piece chandelier that anchors the room. The attention to detail here speaks volumes, with every element chosen to elevate both form and function. A built in surround sound system further enhances the atmosphere, making it perfect for hosting memorable gatherings.



The kitchen is equally impressive designed with both aesthetics and practicality in mind. Crisp white cabinetry is beautifully complemented by oak style worktops, creating a timeless and elegant contrast. Storage is abundant and the expansive worktop space ensures effortless meal preparation. Fully integrated appliances including a dishwasher, fridge freezer, oven, hob and extractor are seamlessly incorporated. The kitchen also benefits from the home's integrated sound system, reinforcing its role as a true social hub. An additional dining space within the kitchen provides a more intimate setting, comfortably seating four around a stylish round table. Warm, earthy tones in the seating and wall finishes add character, while large French doors flood the space with natural light and offer delightful views of the south facing garden perfect for morning coffee or relaxed evenings. Talk about an abundance of storage space available in cupboards throughout the floor.

The ground floor is further enhanced by an impressively spacious WC, adding both convenience and a real sense of scale to the home. Partly tiled with beautiful sandstone effect tiles, the space introduces warm, natural tones that contrast elegantly with the lighter beige palette throughout. Generous in size and thoughtfully presented, it offers both practicality and style, while its neutral finish provides the perfect canvas for any new owner to personalise.

Upstairs, the sense of quality and design continues seamlessly. The journey to the upper level is elevated by carefully placed artwork along the staircase, leading to a striking, expansive landing where the oak flooring opens out to serve all four bedrooms.



The principal bedroom is a superb retreat exceptionally spacious and designed with both comfort and sophistication in mind. It easily accommodates a king size bed alongside a range of freestanding furniture, with additional space for dressing or vanity areas. A fully panelled feature wall adds a refined touch, enhancing the room's sense of luxury. The accompanying en suite bathroom is equally impressive, featuring stylish tiling and an upgraded walk in shower, creating a private, spa like space.

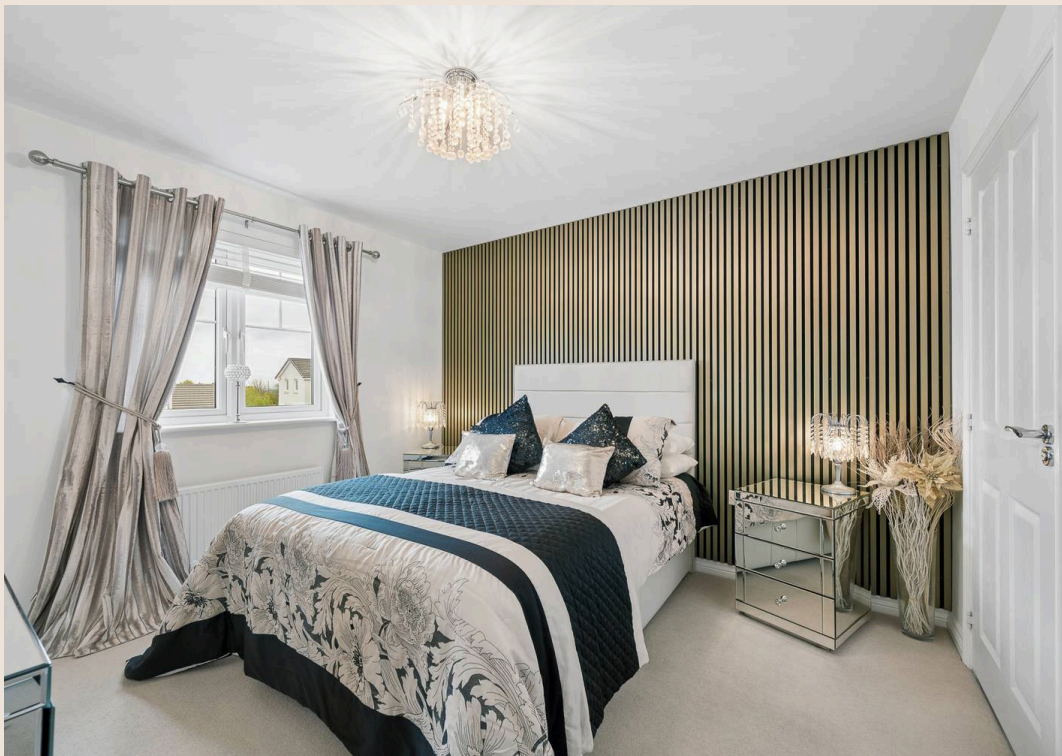


Bedroom two is another generously proportioned room, currently arranged to accommodate a double bed but equally capable of hosting a king size. It benefits from integrated wardrobe space, alongside additional room for freestanding pieces such as dressing or makeup tables. Its calm, neutral décor ensures it is both inviting and adaptable. A standout feature is the Jack and Jill en-suite beautifully finished, fully tiled and presenting in immaculate, condition with a new walk in shower. This elegant space connects seamlessly to the next bedroom. The adjoining bedroom offers a fantastic and versatile space, enhanced by deeper tones and fresh carpeting that create a cosy yet contemporary feel. Currently styled as a tranquil retreat, featuring impressive classic musical instruments, it comfortably accommodates a double bed and additional furnishings, while also lending itself perfectly to use as a relaxation room, home office or creative area.

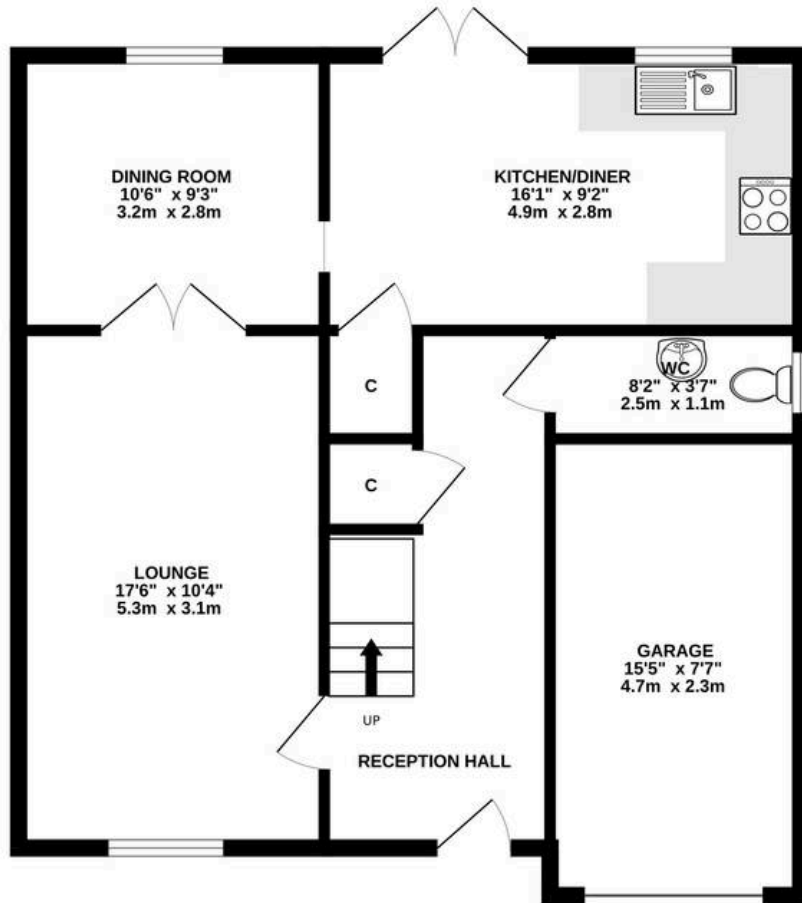
The third bedroom is equally adaptable and currently utilised as a home gym, housing a range of equipment including a treadmill and exercise bike. Generous in size and finished in neutral tones, it offers excellent flexibility ideal as a bedroom, home office or dedicated wellness space depending on the needs of the next owner.

Externally, the property continues to impress. The garden has been thoughtfully designed for low maintenance while still offering a rich and rewarding outdoor environment. A variety of established planting includes herbs, fruits and vegetables creating a self sustaining element that adds both charm and practicality. The space is private and not overlooked, providing an incredibly private and secluded haven. There is ample room for outdoor furniture, comfortably accommodating six to eight people, making it perfect for entertaining or simply unwinding, the space is enhanced by a number of stunning water features. The possibilities are endless for this impressive garden space.

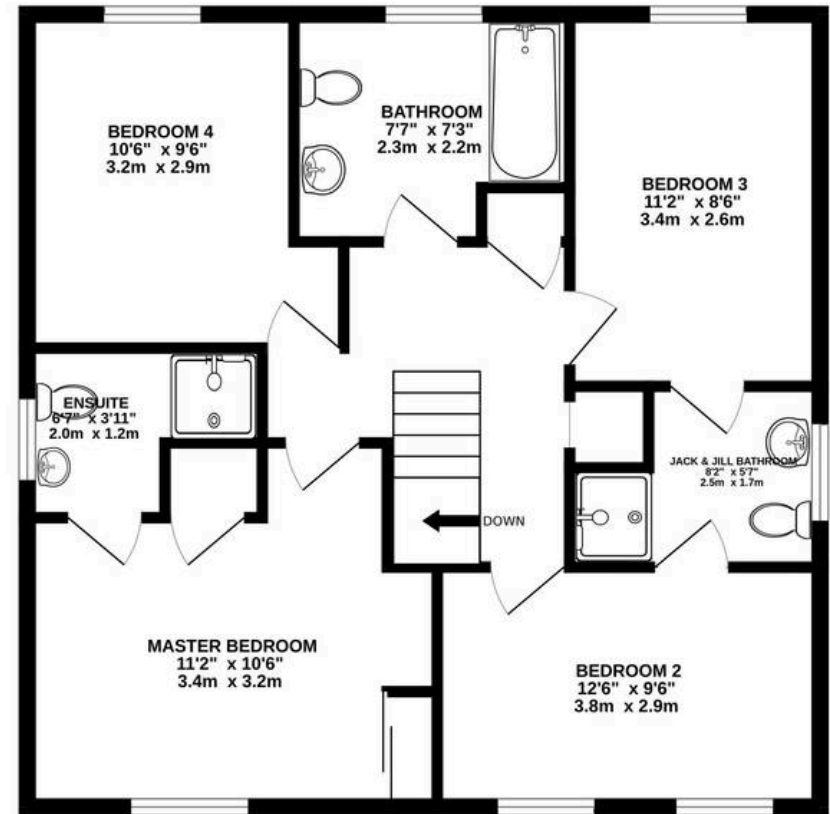
This truly is a special property presented in true show home condition, meticulously cared for, extensively upgraded, and finished to an exceptional standard throughout.



GROUND FLOOR



1ST FLOOR



Whilst every attempt has been made to ensure the accuracy of the floorplan contained here, measurements of doors, windows, rooms and any other items are approximate and no responsibility is taken for any error, omission or mis-statement. This plan is for illustrative purposes only and should be used as such by any prospective purchaser. The services, systems and appliances shown have not been tested and no guarantee as to their operability or efficiency can be given.
 Made with Metropix ©2026



Bridges Properties

15 Shairps Business Park, Livingston - EH54 5FD

01501519435

info@bridges-properties.co.uk

www.bridges-properties.co.uk/

