



- A smart end of terrace bungalow appreciating far reaching views
- Lounge to front with views, gas central heating and double glazing
- Attractive fitted kitchen leading to a utility porch with door to garden
- Two bedrooms and professionally adapted wet room
- Large corner plot garden to rear with lawns, patio and summer house
- Beautifully presented and offered for sale with no onward chain



"A smart end of terrace bungalow located in a quiet pedestrianised location with far reaching views to front and a good size corner plot garden to rear".

Offered for sale with no onward chain.

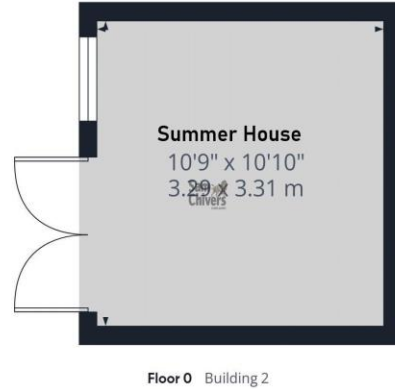
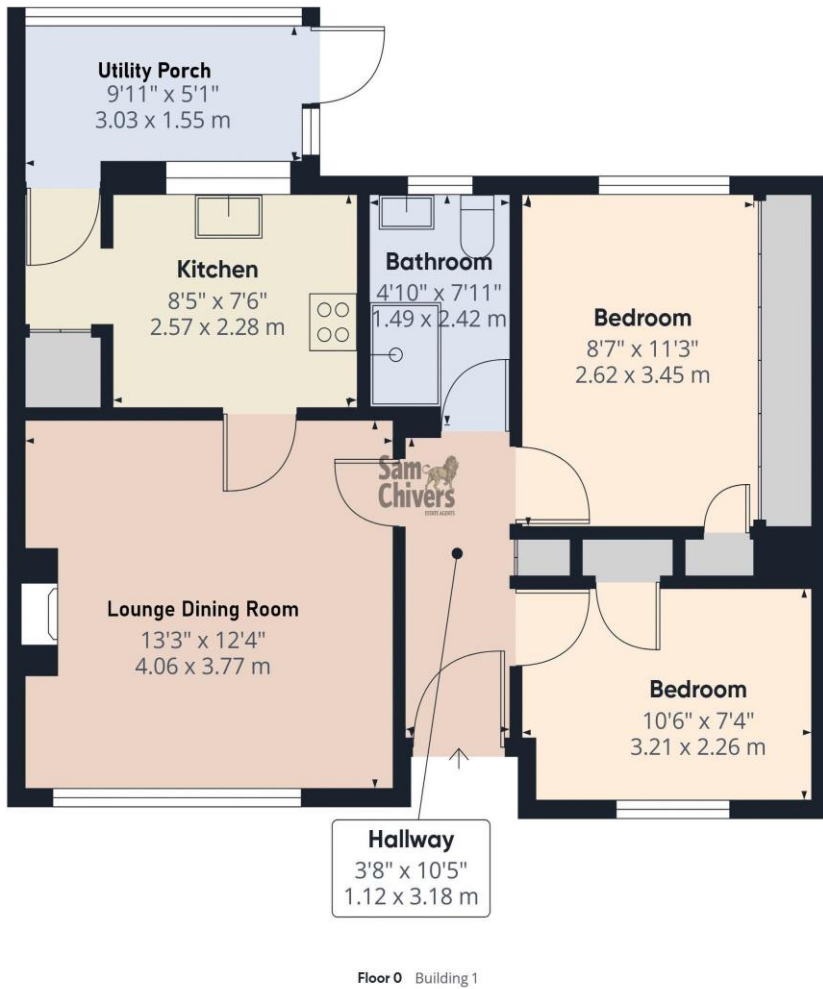
The accommodation is presented in particularly good order throughout and comprises an entrance hallway, lounge with fantastic views, fitted kitchen leading through into the utility porch with door onto garden. Two bedrooms and a professionally adapted wet room. Gas central heating and double glazing.

Externally the property is approached from a communal parking area via a pathway bordered by a communal lawn leading to a front garden and pathways to front door and garden. The rear garden is a decent size and fully enclosed with lawn, patio, summer house, vegetable plot with shed and greenhouses.

AGENTS NOTE: Please note that it is not possible to reach the property by car, parking is in a first come first serve communal car park which is approx. a 45-metre walk from the car park area to the front door.

Tenure: Freehold. **Council Tax Band:** B.





Approximate total area⁽¹⁾
708 ft²
65.6 m²

(1) Excluding balconies and terraces

Calculations reference the RICS IPMS 3C standard. Measurements are approximate and not to scale. This floor plan is intended for illustration only.

GIRAFFE360



www.samchiversproperty.co.uk



Sam Chivers Estate Agents



@samchiversestateagents



@samchiversproperty



Score	Energy rating	Current	Potential
92+	A		
81-91	B		82 B
69-80	C		
55-68	D	66 D	
39-54	E		
21-38	F		
1-20	G		

Sam Chivers Estate Agents can also provide independent mortgage and conveyancing recommendations should you require such a service. Please contact our office on 01761 411020 or email us at sales@samchiversproperty.co.uk

These sales particulars provide an approximate guide and form no part of a contract. It is the purchaser's responsibility to satisfy themselves that the property has been accurately described and that all fixtures and apparatus are functioning correctly. Your home may be at risk if you do not keep up repayments secured against it.