



**125 Gardner Road, Maidenhead SL6 7PT**

**welcome to**

**Gardner Road, Maidenhead**

Nestled in the highly sought-after community of Maidenhead, Gardner Road presents an exceptional opportunity for families, professionals and commuters alike. This home is a great opportunity for a family to come in and make it their own with some updating needed.



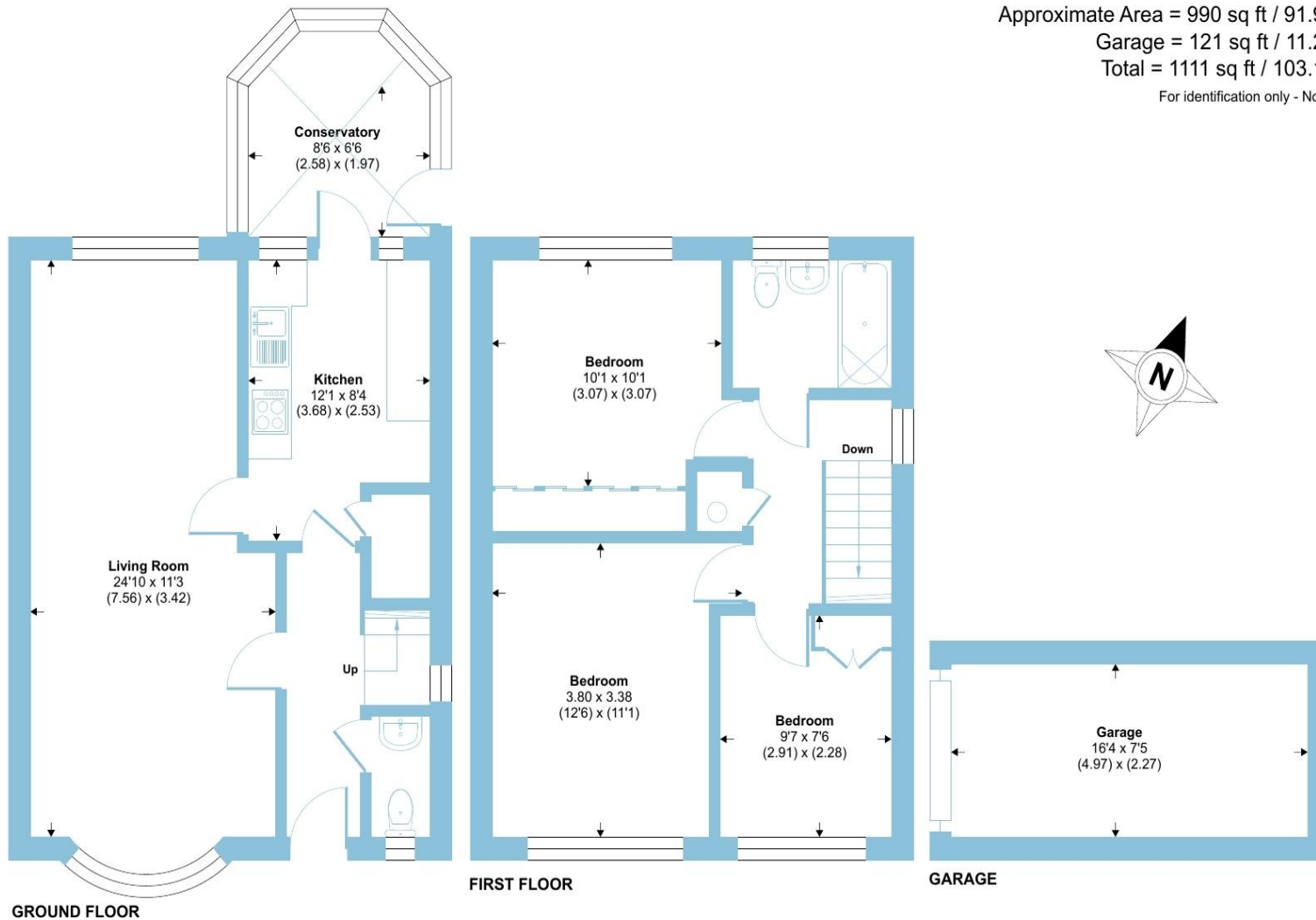
# Gardner Road, Maidenhead, SL6

Approximate Area = 990 sq ft / 91.9 sq m

Garage = 121 sq ft / 11.2 sq m

Total = 1111 sq ft / 103.1 sq m

For identification only - Not to scale



As you enter, the spacious hallway leads to an appointed living room filled with natural light and thoughtfully designed for both relaxation and entertaining. Upstairs you'll find three well-proportioned bedrooms and a family bathroom, delivering both comfort and practical living space.

Outside, the private rear garden offers a peaceful retreat for summer barbecues, children's playtime or simply enjoying the sunshine. Positioned just moments from excellent local amenities, this home ensures your everyday needs are effortlessly met. Top-rated schools, green open spaces and a bustling town centre are all within easy reach-ideal for families seeking both community and convenience.

For commuters, the connection to central London couldn't be better. With direct train services from Maidenhead and onward access via the Elizabeth Line, you'll be connected for work or leisure with ease. Moreover, road links to the motorway network and Heathrow Airport keep travel time to a minimum.

Gardner Road itself is a well-regarded residential thoroughfare known for its friendly ambience and excellent access to local services. Properties in this area are in high demand and rarely linger on the market-so if you are looking to secure a superb home in Maidenhead, this one certainly ticks all the boxes.

welcome to

## 125 Gardner Road, Maidenhead

- RARELY AVAILABLE
- SOUGHT-AFTER COMMUNITY
- SOME UPDATING NEEDED
- PRIVATE REAR GARDEN
- THREE GOOD SIZE BEDROOMS
- CONSERVATORY
- DOWNSTAIRS W.C.
- EXCELLENT ACCESS TO LOCAL AMENITIES

Tenure: Freehold EPC Rating: E  
Council Tax Band: D

**£480,000**



Please note the marker reflects the  
postcode not the actual property

check out more properties at [rogerplatt.co.uk](http://rogerplatt.co.uk)



Property Ref:  
MHD122722 - 0003

1. MONEY LAUNDERING REGULATIONS Intending purchasers will be asked to produce identification documentation at a later stage and we would ask for your co-operation in order that there is no delay in agreeing the sale. 2. These particulars do not constitute part or all of an offer or contract. 3. The measurements indicated are supplied for guidance only and as such must be considered incorrect. Potential buyers are advised to recheck measurements before committing to any expense. 4. We have not tested any apparatus, equipment, fixtures or services and it is in the buyers interest to check the working condition of any appliances. 5. Where an EPC, or a Home Report (Scotland only) is held for this property, it is available for inspection at the branch by appointment. If you require a printed version of a Home Report, you will need to pay a reasonable production charge reflecting printing and other costs. 6. We are not able to offer an opinion either written or verbal on the content of these reports and this must be obtained from your legal representative. 7. Whilst we take care in preparing these reports, a buyer should ensure that his/her legal representative confirms as soon as possible all matters relating to title including the extent and boundaries of the property and other important matters before exchange of contracts.

Roger Platt is a trading name of Sequence (UK) Limited which is registered in England and Wales under company number 4268443, Registered Office is Cumbria House, 16-20 Hockliffe Street, Leighton Buzzard, Bedfordshire, LU7 1GN. VAT Registration Number is 500 2481 05.

  
roger platt



**01628 773333**



Maidenhead@rogerplatt.co.uk



25-29 Queen Street, MAIDENHEAD, Berkshire,  
SL6 1NB



**rogerplatt.co.uk**