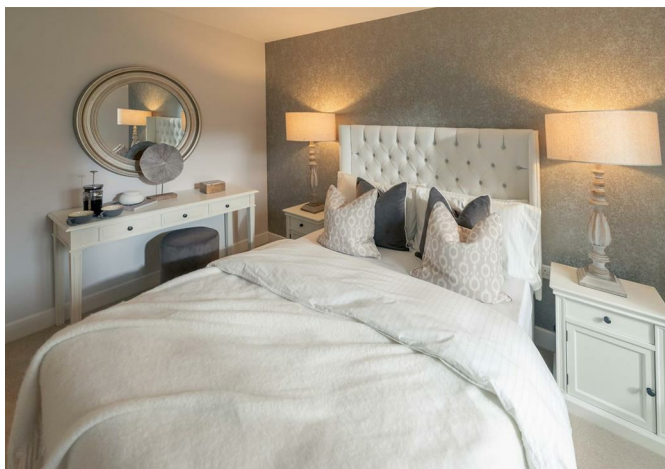




6543645 Abbotswood Common Road, Glebe Court, Romsey, SO51 0ES
£340,000



6543645 Abbotswood Common Road, Glebe Court, Romsey, SO51 0ES

£340,000

A beautifully designed one-bedroom ground floor retirement apartment, exclusively for the over-60s, offering spacious and contemporary living in the heart of Romsey, Hampshire.

The bright, airy living and dining room is perfect for both relaxing and entertaining, with a private patio adding a welcome outdoor space. A separate, fully fitted kitchen - complete with appliances and a waist-height oven for easy access - leads off the dining area. The generous main bedroom benefits from walk-in wardrobes and a dedicated dressing area, while a sleek, modern shower room features a low-profile walk-in shower and comfort-height WC. A useful hallway cupboard and additional storage keep the home clutter-free.

As part of the Glebe Court community, residents enjoy the reassurance of an on-site House Manager, 24-hour digital personal alarms connected to emergency assistance, TV camera door entry and landscaped communal gardens. The development is highly energy efficient, with an EPC rating of B, super insulation and heat recovery throughout - helping to keep running costs low.

Available now to buy at £340,000 or rent at £2,565 pcm, on a 999-year lease. Part buy, part rent options are also available.

Description



Situation

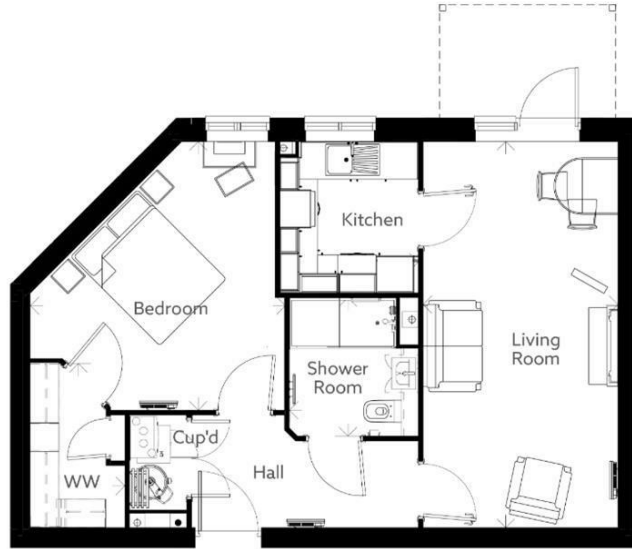


null

Council Tax Band:

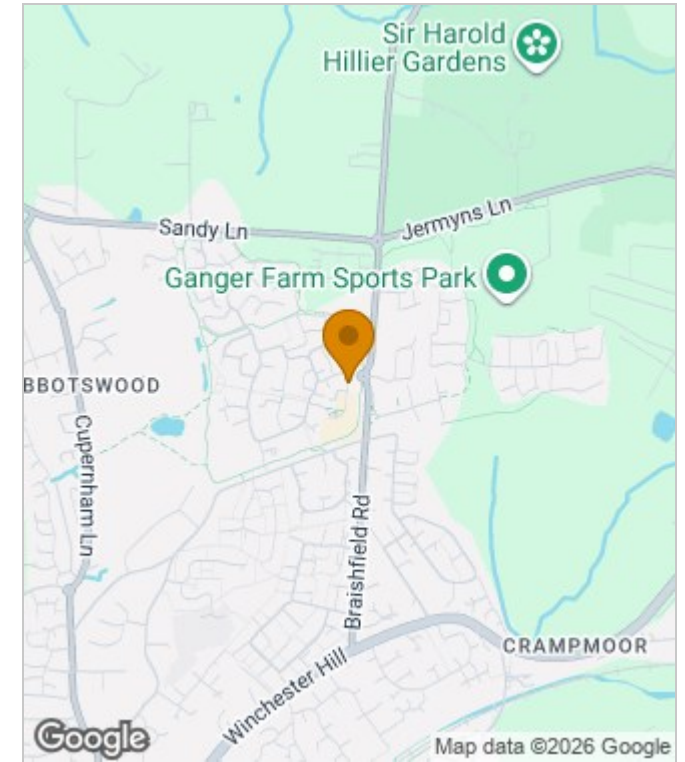
Available:

Floor Plans

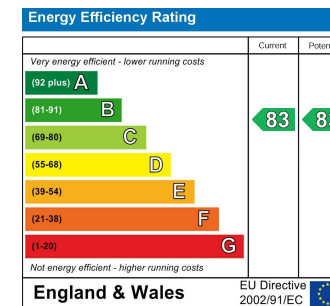


Living Room (Max)	10'-2" x 20'-1 1/2"	3097mm x 6130mm
Kitchen (Max)	7'-2 1/2" x 7'-11"	2200mm x 2413mm
Shower Room (Max)	6'-9" x 7'-3"	2061mm x 2211mm
Bedroom (Max)	13'-3 1/2" x 14'-0"	4054mm x 4266mm
Walk-In Wardrobe (Max)	4'-11" x 8'-6 1/2"	1500mm x 2605mm

Area Map



Energy Performance Graph



These particulars, whilst believed to be accurate are set out as a general outline only for guidance and do not constitute any part of an offer or contract. Intending purchasers should not rely on them as statements of representation of fact, but must satisfy themselves by inspection or otherwise as to their accuracy. No person in this firm's employment has the authority to make or give any representation or warranty in respect of the property.