



PCM

£2,250 PCM

Casson Street

London, E1 5LA

Offered for rent is this good size 2 double bedroom apartment situated just off Brick Lane.

The property also features a good size open plan kitchen to reception room with space for dining table, views of the City, 2 good size double bedrooms and a modern fitted bathroom.

Set on the top floor of a private modern building situated on a quiet turning just off Brick Lane with easy access to both Liverpool Street and Whitechapel Stations.

Offered furnished

Available: now

5 weeks deposit: £2596

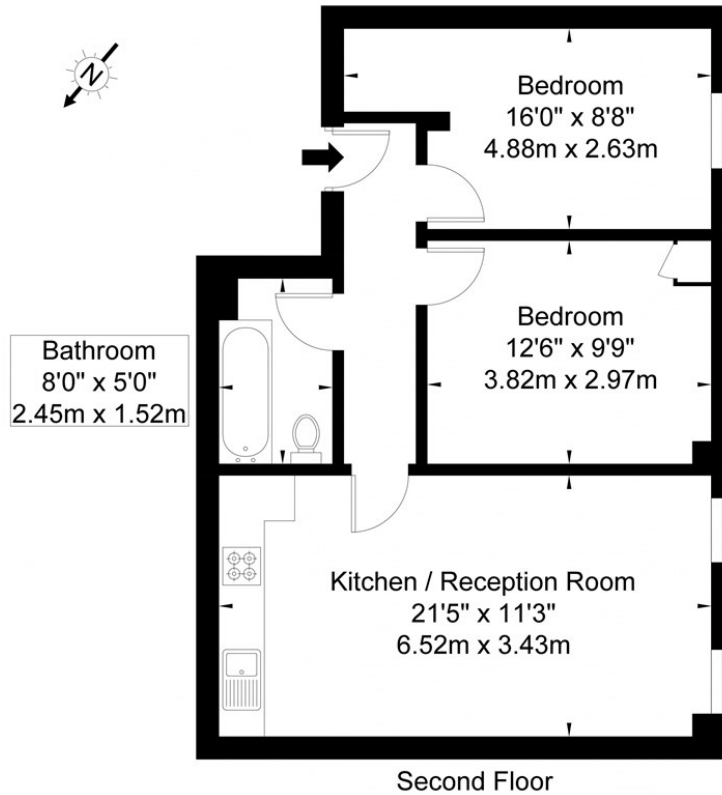
Council Tax: Band D





Casson Street, Whitechapel, E1 5LA

Approx. Gross Internal Area = 55.3 sq m / 595 sq ft



Ref

Copyright **BLEU PLAN**

Disclaimer : Floor plan measurements are approximate and are for illustrative purposes only
While we do not doubt the floor plan accuracy and completeness, you or your advisors should
conduct a careful, independent investigation of the property in respect of monetary valuation

Energy Efficiency Rating		Current	Potential
<i>Very energy efficient - lower running costs</i>			
(92 plus) A			
(81-91) B			
(69-80) C		80	81
(55-68) D			
(39-54) E			
(21-38) F			
(1-20) G			
<i>Not energy efficient - higher running costs</i>			
England & Wales		EU Directive 2002/91/EC	

Agents Note: Whilst every care has been taken to prepare these particulars, they are for guidance purposes only. All measurements are approximate and are for general guidance purposes only and whilst every care has been taken to ensure their accuracy, they should not be relied upon and potential buyers/tenants are advised to recheck the measurements

OFFICE ADDRESS
88 Cheshire Street
London
E2 6EH

OFFICE DETAILS
0207 739 6969
info@peachproperties.com
www.peachproperties.com