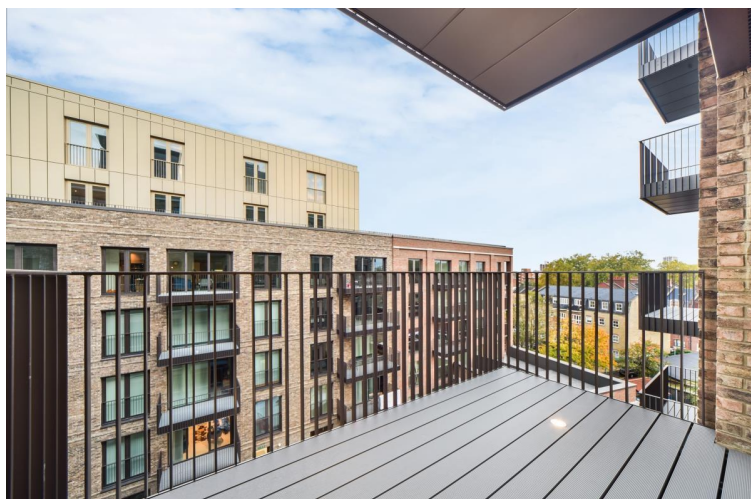
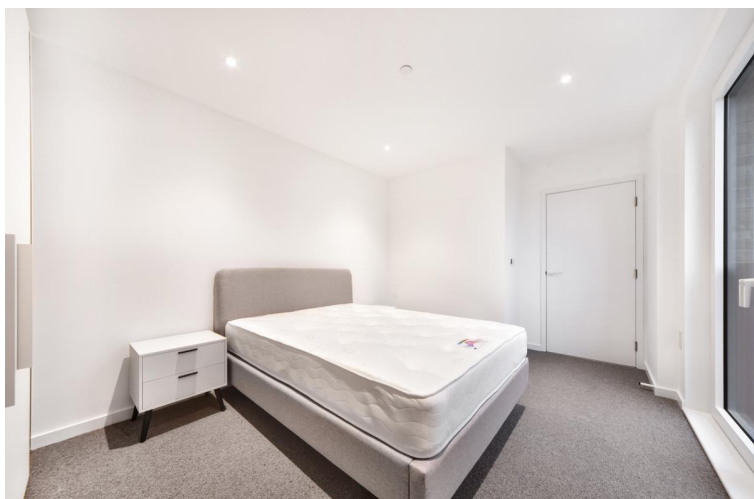


## Cendal Crescent, London E1

Price £560 per week - Furnished







## Description

A furnished 1 bedroom apartment in Georgette Apartments, the Silk District.

Offered furnished, the stunning apartment is situated on the 5th floor and boasts open plan living / dining area, large balcony, double bedroom with large fitted wardrobes, luxury bathroom, additional w/c, fully fitted kitchen with Oak effect finish, tiled flooring and excellent storage space.

The Silk District is a development from Mount Anvil and offers residents fantastic amenities which include 24 hour concierge, on site gym, cinema room, rooftop gardens and resident's lounge. The development is within easy reach of the City of London and in the heart of the Whitechapel regeneration area, approximately 0.3 miles from Whitechapel Underground / Crossrail station.

Council tax band: E. Rent is payable on a monthly basis and you may be required to pay more than a month's rent in advance, depending on your circumstances. You will be required to pay a 1 week holding deposit following a successful offer. Tenancies with annual rents up to £50,000 will require a 5 weeks' security deposit, while those exceeding this threshold will require a 6 weeks' deposit. Utility bills, council tax, telephone line and broadband are not included in the rent. As well as paying the rent, you may also be required to make some additional permitted payments. If your tenancy does not qualify as an AST, additional fees may apply. Please visit [jll.co.uk/fees](http://jll.co.uk/fees) for details of fees that may be payable when renting a property. To check broadband and mobile phone coverage please visit Ofcom here [ofcom.org.uk/phones-telecoms-and-internet/advice-for-consumers/advice/ofcom-checker](http://ofcom.org.uk/phones-telecoms-and-internet/advice-for-consumers/advice/ofcom-checker)

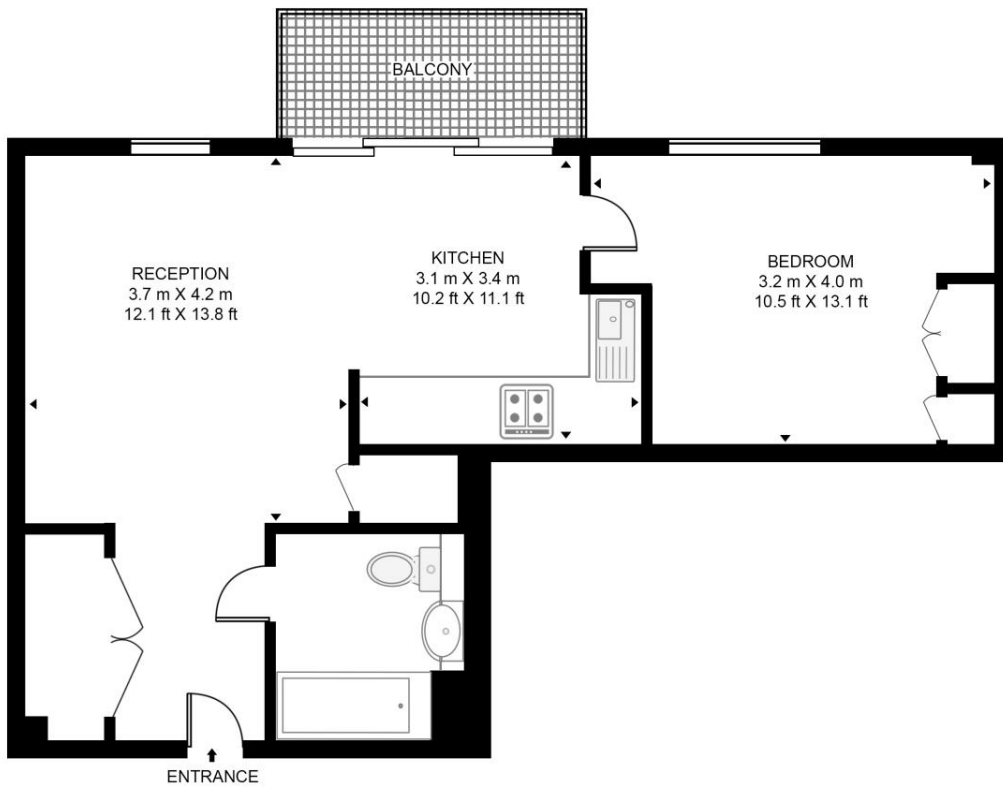
- 1 Bedroom
- 1 Bathroom
- 5th Floor
- Large west facing balcony
- On-site amenities including cinema, gym and resident's lounge
- 24 hour concierge
- 0.3 miles from Whitechapel Station
- Approx. 563 sq ft ( 52.3 sq m)
- Furnished
- EPC: B

# Floorplan

563 sq ft | 52 sq m

## GEORGETTE APARTMENTS

APPROXIMATE GROSS INTERNAL FLOOR AREA 563 SQ.FT (52.3 SQ.M)



FIFTH FLOOR

**HDVA**

This floor plan has been defined by the RICS Code of Measurement. This floor plan and all others are for approximate representative purposes only and upon usage is agreed to as such by the client.

WWW: [hdvirtualart.com](http://hdvirtualart.com) | TEL: 0203.974.1567 | EMAIL: [info@hdvirtualart.com](mailto:info@hdvirtualart.com)

City  
25 Walbrook The Walbrook  
Building,  
London EC4N 8AF  
+4420 7337 4000

*Urban living, your way.*

[jll.co.uk/residential](http://jll.co.uk/residential)

© 2019 Jones Lang LaSalle IP, Inc. All rights reserved. All information contained herein is from sources deemed reliable; however, no representation or warranty is made to the accuracy thereof.

