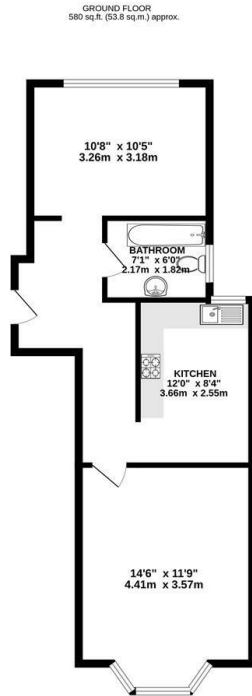




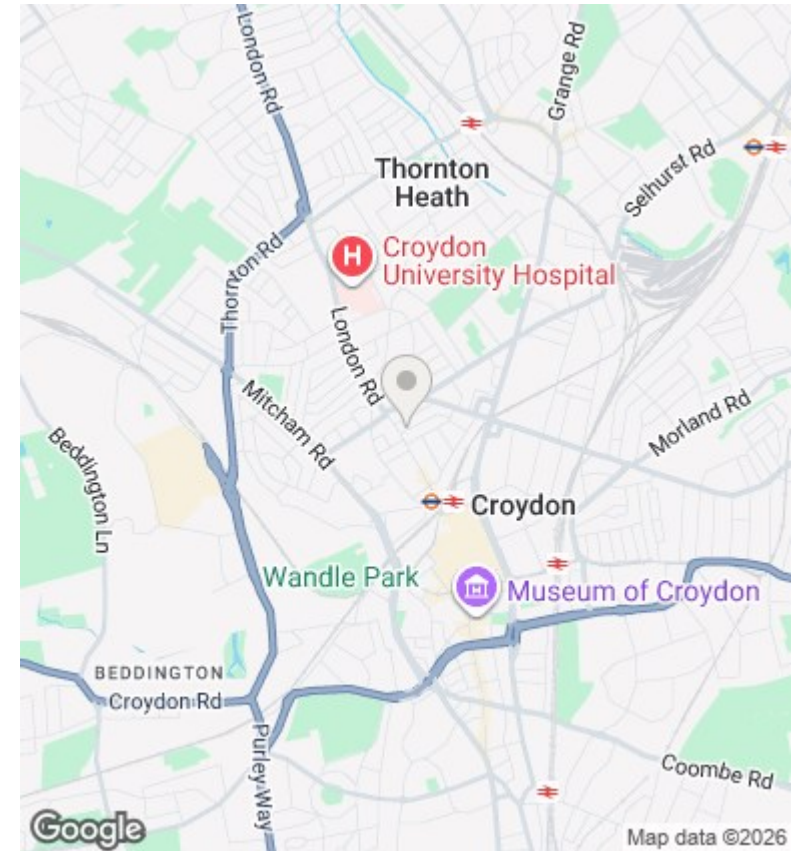
Flat 1, 58 Nova Road, Croydon, CR0 2TL

Asking Price £215,000

- One-bedroom ground floor flat
- Neatly presented throughout
- Well-maintained bathroom
- Perfect for first-time buyers or investors
- Private garden
- Bright and well-proportioned living area
- Excellent transport links nearby
- Modern fitted kitchen
- Generous double bedroom
- Close to local shops, supermarkets, and amenities



TOTAL FLOOR AREA: 580 sq. ft. (53.8 sq.m.) approx.
Whilst every attempt has been made to ensure the accuracy of the figures contained here, measurements of doors, windows, rooms and any other items are approximate and no responsibility is taken for any error, omission or misstatement. This plan is for illustrative purposes only and should be used as such by any prospective purchaser. The services, systems and appliances shown have not been tested and no guarantee as to their operability or efficiency can be given.
 Made with iMagine 12/2025



Directions

Viewings

Viewings by arrangement only. Call 0208 681 8133 to make an appointment.

Council Tax Band

B

EPC Rating:

E

Energy Efficiency Rating		Current	Potential
<i>Very energy efficient - lower running costs</i>			
(92 plus) A			
(81-91) B			
(69-80) C			71
(55-68) D			
(39-54) E		52	
(21-38) F			
(1-20) G			
<i>Not energy efficient - higher running costs</i>			
England & Wales		EU Directive 2002/91/EC	