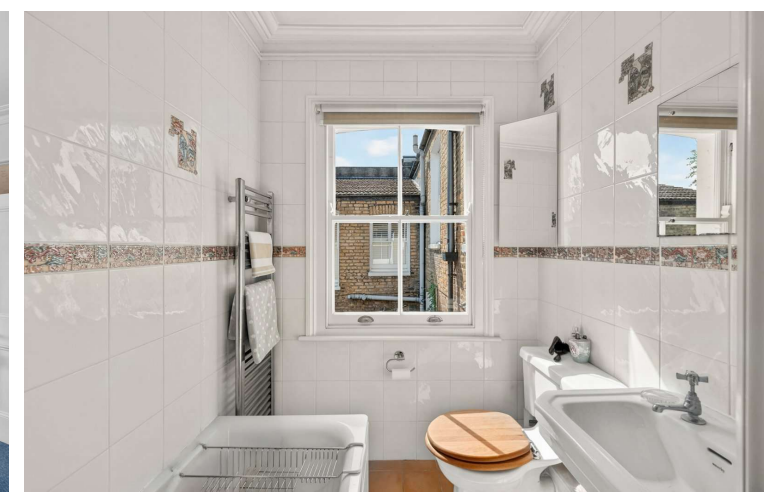
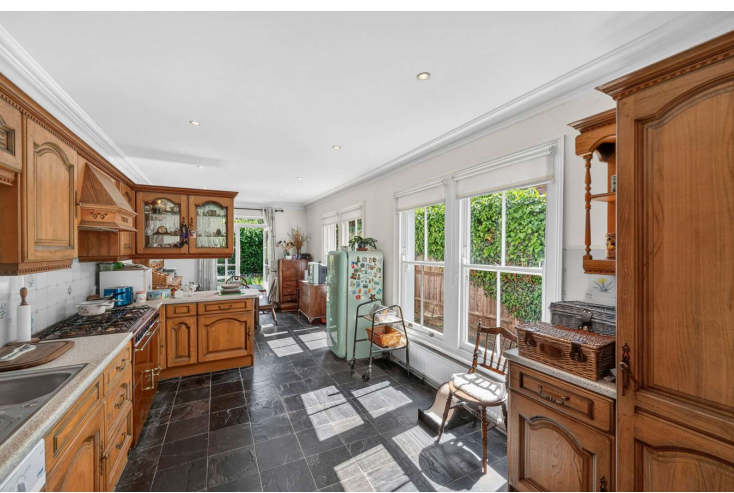




Pagoda Avenue
Richmond, TW9

CHESTERTONS





A beautifully presented five-bedroom Edwardian family home ideally positioned on the ever-sought-after Pagoda Avenue, moments from Old Deer Park, Richmond station and the Royal Botanic Gardens. Occupying an enviable position with a fantastic outlook along Beaumont Avenue, this substantial property offers over 1,700 sq ft of versatile living accommodation arranged over three floors.

Retaining a wealth of charming period features throughout, the house blends character and practicality perfectly for modern family living. The ground floor comprises two elegant reception rooms with high ceilings and large bay windows, a spacious eat-in kitchen/dining room ideal for entertaining, and a convenient downstairs cloakroom. Double doors open onto a delightful mature rear garden with side pedestrian access and a useful garden shed.

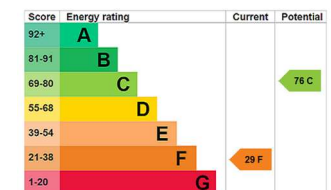
The upper floors provide five well-proportioned bedrooms and two bathrooms, including a generous principal bedroom and an impressive top floor guest bedroom with excellent eaves storage.

Further benefits include off-street parking to the front, excellent natural light throughout and a highly desirable location close to Kew Road, Richmond town centre and the Lion Gate entrance to Kew Gardens.

Richmond station offers excellent transport links via the District Line, London Overground and South Western Rail services, whilst the surrounding area is renowned for its green open spaces, outstanding schools and vibrant village-style atmosphere.

- Freehold
- Excellent Transport Links
- Off-Street Parking
- Garden

Asking Price £1,750,000



Tenure: Freehold
Service Charge: £0
Ground Rent: £0
Local Authority: London Borough of Richmond upon Thames
Council Tax Band: G

Chestertons Kew Sales

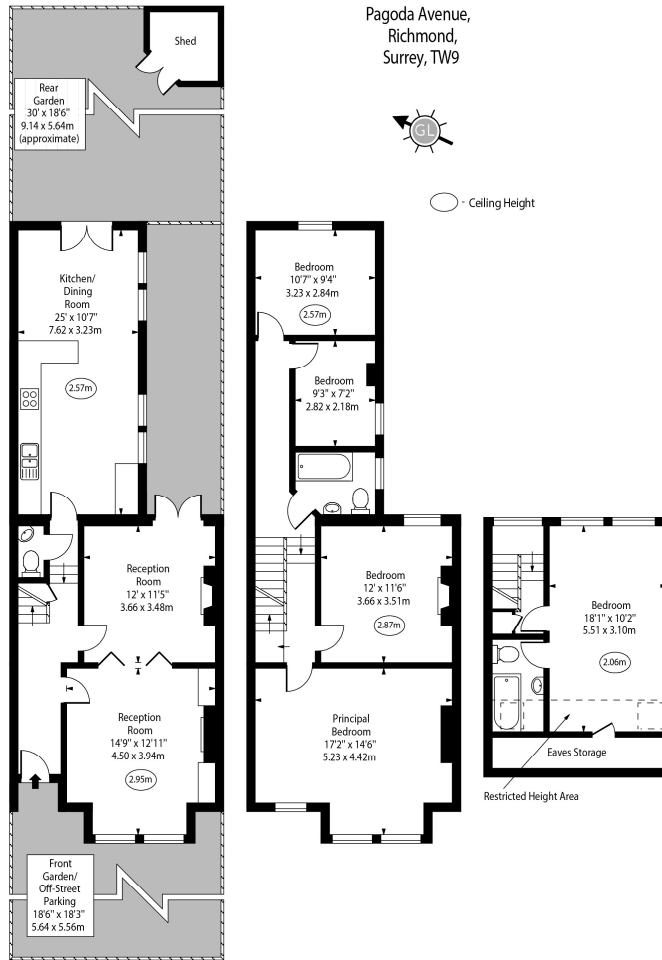
1 Royal Parade
 Kew
 Richmond
 TW9 3QD

kew@chestertons.co.uk
 020 8104 0340

Pagoda Avenue,
Richmond,
Surrey, TW9



○ - Ceiling Height



Ground Floor First Floor Second Floor

Approx Gross Internal Area 1652 Sq Ft - 153.47 Sq M

Approx. Floor Area Including Restricted Heights 1744 Sq Ft - 162.02 Sq M
(Including Eaves Storage)

Every attempt has been made to ensure the accuracy of the floor plan shown.
However, all measurements, fixtures, fittings, and data shown are approximate interpretations and
for illustrative purposes only. Measured according to the RICS. Not To Scale.
www.goldlens.co.uk
Ref. No. 031669E

Chesterton UK Services Limited trading as Chestertons for themselves and for the vendor of this property whose agents they are, give notice that (i) these particulars do not constitute any part of an offer or contract, (ii) all statements contained within these particulars are made without responsibility on the part of Chestertons or the vendor, (iii) whilst made in good faith, none of the statements contained within these particulars are to be relied upon as a statement or representation of fact, (iv) any intending purchasers must satisfy themselves by inspection or otherwise as to the correctness of each of the statements contained within these particulars, (v) the vendor does not make or give either Chestertons or any person in their employment any authority to make or give representation or warranty whatsoever in relation to this property. Wide angle lenses may be used. ©Copyright Chestertons | Chesterton UK Services Limited | Registered Office 5th Floor, The Lantern, 75 Hampstead Road, London, NW1 2PL Registered Company Number 05334580.



This paper is
100% recyclable