



SPENCER JAMES
RESIDENTIAL

8 Hartlepool Court | London E16 2RL
T: +44 (0) 20 7474 3636
E: mail@spencer-james.co.uk
www.spencer-james.co.uk



**** Three Bedroom Duplex Penthouse ****

**** Chain Free ****

**** 1290 Sq.Ft Property With Large Balcony ****

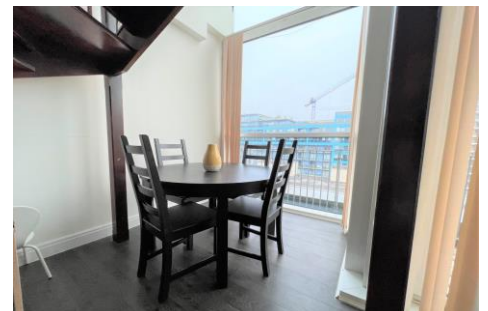
**** Underground Parking ****

**** EPC Rating D ****

**** Council Tax Band G ****

**** ****

**** ****



Capital East Apartments, Western Gateway, London
£700,000

Offered Chain free is this well presented 9th and 10th floor three bedroom duplex penthouse in the popular Capital East development. The property benefits from residents gym, under-croft parking, 24 hour concierge. Located with a short walk to two DLR stations, the Excel centre, Emirates Air Line and the Crystal Building.

Entrance Hall

Laminate flooring, doors to all rooms, storage cupboard housing hot water tank.

Lounge/Diner

Laminate flooring, double glazed window to rear, double glazed balcony door giving access to balcony, wall mounted electric heater, open plan to kitchen, stairs to 1st floor landing

Kitchen

Range of eye and base level units, stainless steel sink with mixer tap over, kitchen appliances including four ring electric hob with extractor fan over, electric oven, dishwasher, washing machine, microwave, breakfast bar, tiled flooring.

Bedroom Three

Laminate flooring, double glazed window to front, wall mounted electric heater.

WC

Two piece suite comprising of low level WC, wash hand basin with mixer tap over, wall mounted towel rail, tiled flooring

1st Floor Landing

Laminate flooring, doors to all rooms.

Master Bedroom

Laminate flooring, double glazed window to front, wall mounted electric radiator, fitted wardrobe, door to en-suite

En-suite

Three piece suite comprising of low level wc, wash hand basin with mixer tap over, large shower cubicle, tiled flooring and splash back, wall mounted towel rail.

Bedroom Two

Laminate flooring, wall mounted electric heater, double glazed window to front, fitted wardrobe.

Family Bathroom

Three piece suite comprising of low level WC, wash hand basin with mixer tap over, bath with mixer tap over with shower attachment and shower screen, wall mounted towel rail.

Balcony

Balcony

Capital East Apartments, 21 Western Gateway, E16

Approx. Gross Internal Area 1290 Sq Ft - 119.84 Sq M

