



A rarely available five bedroom detached home in the heart of Northwood
Mount View, Northwood, HA6 3NZ

ROBSONS

Asking Price: £4,500 pcm

A rarely available five bedroom detached home in the heart of Northwood

Mount View, Northwood, HA6 3NZ

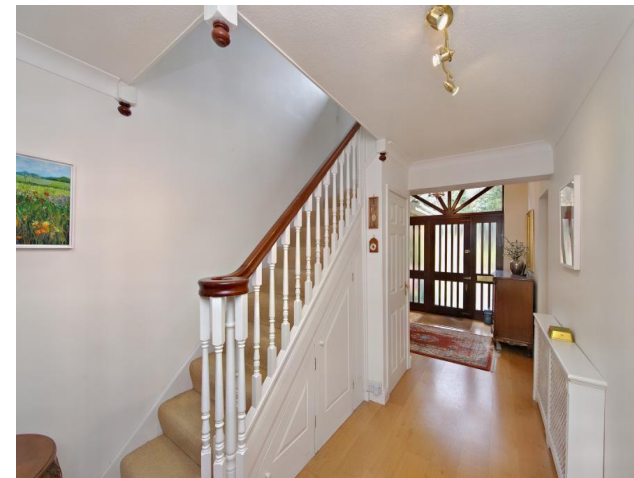
• DETACHED HOUSE • FOUR/FIVE BEDROOMS • TWO/THREE RECEPTION ROOMS • KITCHEN • UTILITY • GUEST W.C • THREE BATHROOMS • GARDEN • DRIVEWAY • DOUBLE GARAGE • UNFURNISHED

Description

A rarely available and beautifully presented four/five-bedroom detached home situated in the heart of Northwood. The property features a welcoming entrance hall, a spacious dining room, a comfortable living room, and an additional reception room that can also serve as a fifth bedroom, complete with an ensuite shower room. There is also a guest WC on the ground floor. Upstairs, the property offers a family bathroom and four generously sized double bedrooms, with the principal bedroom benefiting from its own ensuite bathroom. Externally, the home boasts a large front driveway, well-maintained front and rear gardens, and a double garage. *Please note that the images displayed include furnishings from a previous occupant and do not represent the current presentation of the property* ** An advance payment of one weeks rent is required to secure this property**

Location

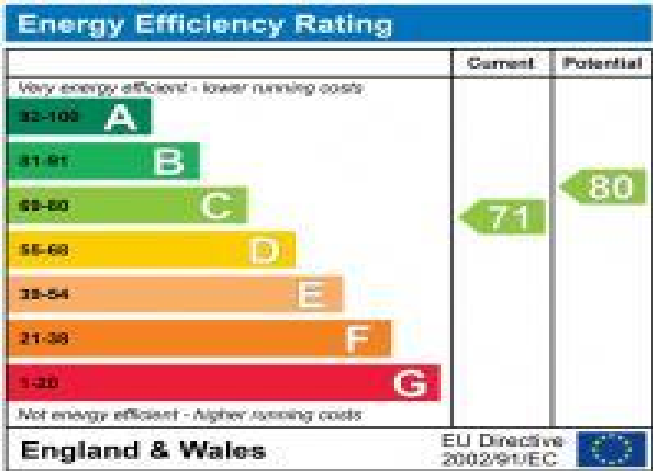
Northwood provides a range of shopping facilities, a Waitrose supermarket, restaurants and the Metropolitan Line Station providing access to Baker Street and the city beyond. The area has a range of both private and state schools. Places of worship and recreational facilities are also well catered for in the surrounding area and major motorway links to M25 and M1 are nearby.





Additional Information

- Hillingdon Council
- Council Tax Band: G
- Deposit Amount: £5,192.00
- Reservation Payment: One weeks rent
- Energy Efficiency Rating: Band C
- Available Date: 27/04/2026



Mount View, Northwood, Ha6

Approximate Area: 205.2 sq m / 2208 sq ft

Outbuildings: 25.7 sq m / 277 ft (including Garage)

Total = 231 sq m / 2485 sq ft.



REGISTERED OFFICE 2-4 PACKHORSE ROAD, GERRARDS CROSS, BUCKINGHAMSHIRE, ENGLAND, SL9 7QE. COMPANY NO. 07557114. VAT NO. GB211239453