



Winchester Street
London, SW1V

CHESTERTONS





This beautifully proportioned house offers exceptional versatility, making it an ideal family home or a perfect pied-à-terre. The property is thoughtfully arranged and comprises of three bedrooms and three bathrooms, a stylish main reception and snug

£7,500 pcm

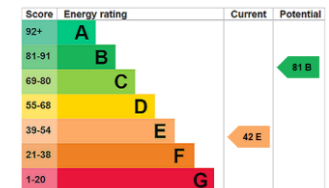
Additional tenant charges apply (fees apply to non-AST tenancies only)

Tenancy Agreement Fee: £300

References per Tenant/Guarantor: £60

Inventory check (approx. £100 – £250 inc. VAT)

chestertons.co.uk/property-to-rent/applicable-fees



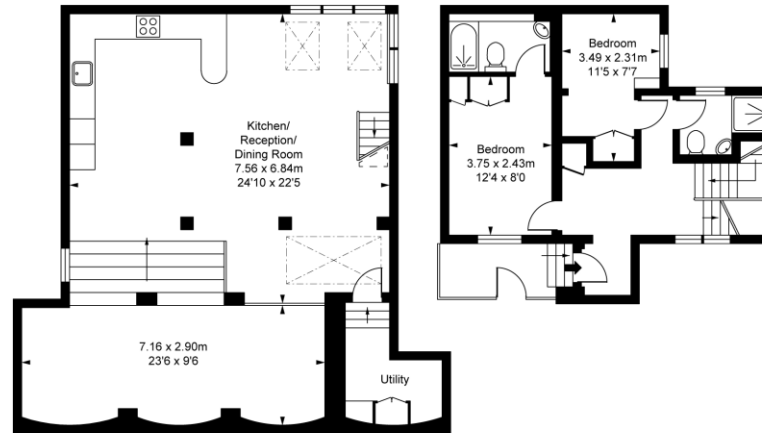
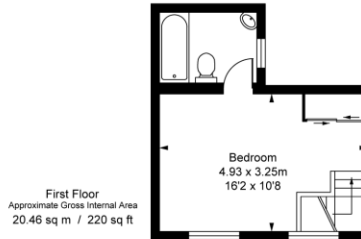
Minimum Term: 3 months
Deposit Required: 4 weeks
Local Authority: Westminster
Council Tax Band: H
EPC Rating: E

Chestertons Westminster & Pimlico Lettings

105 Wilton Road
 London
 SW1V 1DZ

westminsterlettingsusers@chestertons.co.uk
 02030408220
chestertons.co.uk

Winchester Street, SW1V
 Approximate Gross Internal Area
 134.43 sq m / 1,447 sq ft
 (Including restricted height
 under 1.5m (— — —))
 (CH = Ceiling Heights)



Lower Ground Floor
 Approximate Gross Internal Area
 77.66 sq m / 836 sq ft

Ground Floor
 Approximate Gross Internal Area
 36.32 sq m / 391 sq ft

This plan is not to scale. It is for guidance and not for valuation purposes.
 All measurements and areas are approximate only, and have been prepared in accordance with the current edition of theRICS Code of Measuring Practice.
 ©Future-Performance

Chesterton UK Services Limited trading as Chestertons for themselves and for the vendor of this property whose agents they are, give notice that (i) these particulars do not constitute any part of an offer or contract, (ii) all statements contained within these particulars are made without responsibility on the part of Chestertons or the vendor, (iii) whilst made in good faith, none of the statements contained within these particulars are to be relied upon as a statement or representation of fact, (iv) any intending purchasers must satisfy themselves by inspection or otherwise as to the correctness of each of the statements contained within these particulars, (v) the vendor does not make or give either Chestertons or any person in their employment any authority to make or give representation or warranty whatsoever in relation to this property. Wide angle lenses may be used. ©Copyright Chestertons | Chesterton Global Ltd | Registered Office 40 Connaught Street, Hyde Park, London W2 2AB Registered Company Number 05334580.



This paper is
 100% recyclable