

# APARTMENT 7, 10 MARKET SQUARE

£200,000

WITNEY OX28 6BB

GUIDE PRICE



Set just behind the shops on Market Square, this ground floor apartment enjoys an abundance of natural light and is ready to move into. The triple aspect kitchen/living area is a superb space for both dining and relaxing. The kitchen offers an excellent range of modern grey units with a built-in oven, hob and extractor. There is additional space for white goods. French doors open to a small courtyard which offers a private space to enjoy alfresco dining. The double bedroom is equipped with a contemporary fitted ensuite bathroom.

This attractive ground floor apartment perfectly combines modern design with a prime location, making it an excellent opportunity to secure a stylish home or a strong rental investment in a sought-after setting.



 **Small courtyard**

**Breckon & Breckon**  
est.1947

Approximate Gross Internal Area 56.56 sq.m / 609 sq.ft

### Local Authority

West Oxfordshire District Council

### Council Tax

Band B £2,063.29

### Tenure

Leasehold - TBC

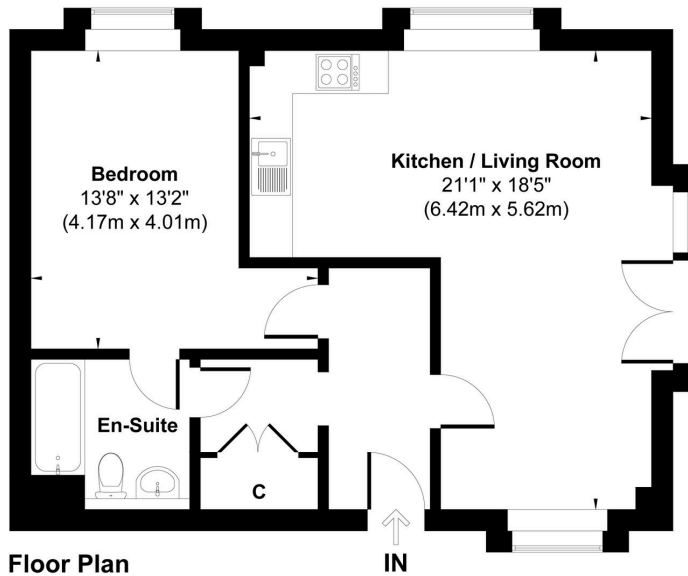
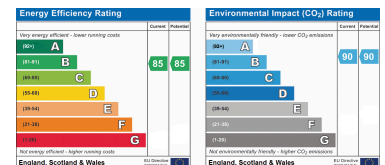


Illustration for identification purpose only, measurements approximate and not to scale.



**Every office** has access to **every buyer** registered across our network of seven offices.

Sharing a single database of buyers ensures maximum exposure for our clients.

## Witney Sales

10 Market Square  
Witney Oxfordshire  
OX28 6BB

t: 01993 776 775

e: [witney@breckon.co.uk](mailto:witney@breckon.co.uk)

#### Summertown

t: 01865 310 300 (sales)  
t: 01865 20 1111 (letting)  
e: [summertown@breckon.co.uk](mailto:summertown@breckon.co.uk)

#### Woodstock

t: 01993 811 881 (sales)  
t: 01993 810 100 (letting)  
e: [woodstock@breckon.co.uk](mailto:woodstock@breckon.co.uk)

#### Headington

t: 01865 750 200 (sales)  
t: 01865 763 999 (letting)  
e: [headington@breckon.co.uk](mailto:headington@breckon.co.uk)

#### New Homes

t: 01865 261 222  
e: [newhomes@breckon.co.uk](mailto:newhomes@breckon.co.uk)

#### Letting and Property

**Management**  
t: 01865 20 1111  
e: [lettings@breckon.co.uk](mailto:lettings@breckon.co.uk)

#### Oxford City Centre

t: 01865 244 735 (sales)  
t: 01865 20 1111 (letting)  
e: [post@breckon.co.uk](mailto:post@breckon.co.uk)

#### Bicester

t: 01869 24 24 23 (sales & letting)  
e: [bicester@breckon.co.uk](mailto:bicester@breckon.co.uk)

#### Abingdon-on-Thames

t: 01235 550 550 (sales)  
t: 01235 554 040 (letting)  
e: [abingdon@breckon.co.uk](mailto:abingdon@breckon.co.uk)

#### Land Team

t: 01865 558 999  
e: [land@breckon.co.uk](mailto:land@breckon.co.uk)

#### Creative Department

t: 01865 310 300  
e: [creative@breckon.co.uk](mailto:creative@breckon.co.uk)