



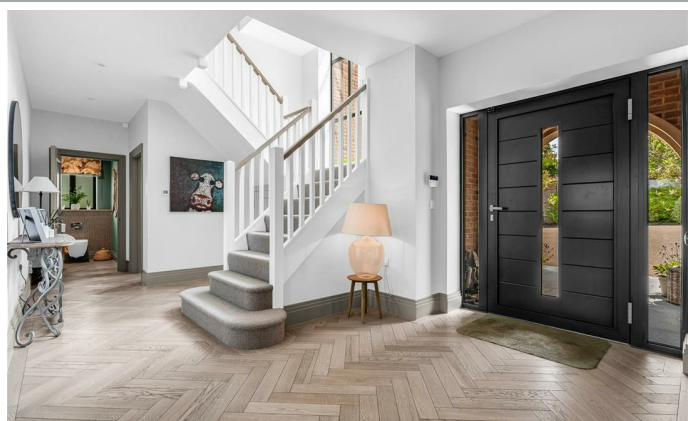
Lichen House, Tanfield Farm, Cheshunt

EN7 6PQ

Price Guide £2,900,000



[stevenoates.com](http://stevenoates.com)



## Lichen House Tanfield Farm, Hammondstreet Road, Cheshunt, Herts, EN7 6PQ

An exceptional detached family home located within this exclusive private road with beautiful views over rolling countryside. Since the property has been purchased from new, the current owners have invested with no expense spared on creating a luxurious and sophisticated turn key home. The accommodation which spans across 6912 sqft comprises of spacious entrance hall with guest cloakroom, living room, home office and a super kitchen, running across the entire back of the house creating an amazing family living space with the addition of a large utility room and walk in pantry. On the first floor, there are 3 double bedrooms, including an huge main bedroom suite (over 900 sqft) with a large dressing room and en-suite bathroom, whilst the bedrooms both have en-suites. On the second floor, there are 2 more double bedrooms, both with en-suites. Externally, the property is approached by a secure, gated driveway providing ample parking with a heated, tiled triple garage with a studio annexe above. The rear gardens offer excellent entertaining spaces with elevated countryside views and a large modern outbuilding/gym. Internal viewing is imperative to fully appreciate the quality of this family home.

Tanfield Farm is set within an exclusive and highly desirable pocket of West Cheshunt, renowned for its blend of countryside charm, yet retaining it's accessibility to London. The property enjoys a tranquil setting amidst open countryside, yet remains within easy reach of excellent schooling, shopping facilities and transport connections. There is also a footpath that leads straight into Broxbourne woods. For commuters, Cheshunt, Cuffley and Broxbourne stations provide regular services into London with journey times from approximately 25 minutes, while connections via Tottenham Hale offer swift access to the Victoria Line and central London. The A10 and M25 are also conveniently accessible, providing excellent road links to London, Hertfordshire and beyond.



70 Fore Street, Hertford, Hertfordshire, SG14 1BY



70 Fore Street, Hertford, Hertfordshire, SG14 1BY





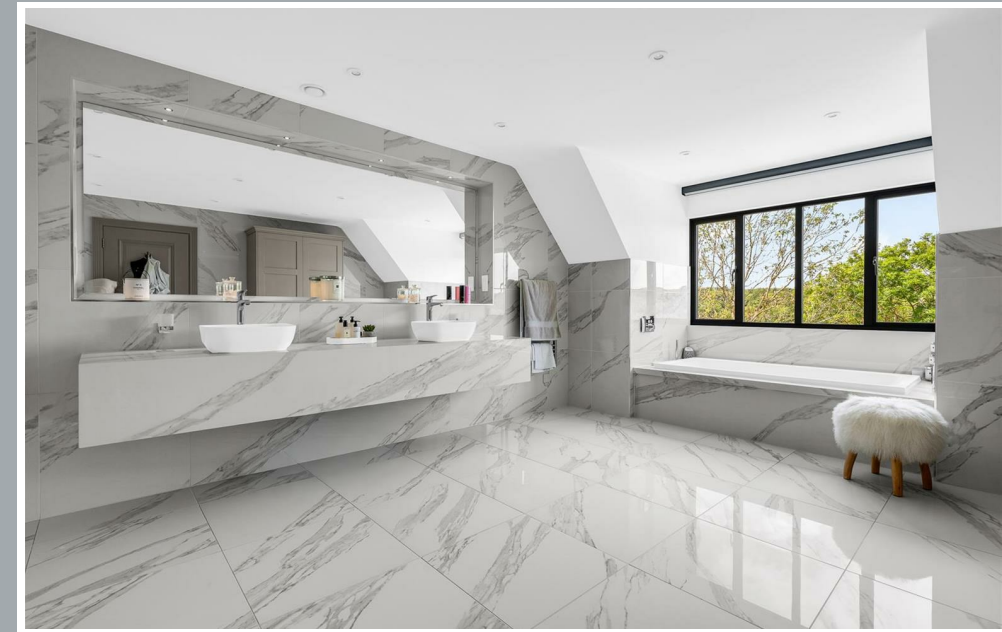
70 Fore Street, Hertford, Hertfordshire, SG14 1BY



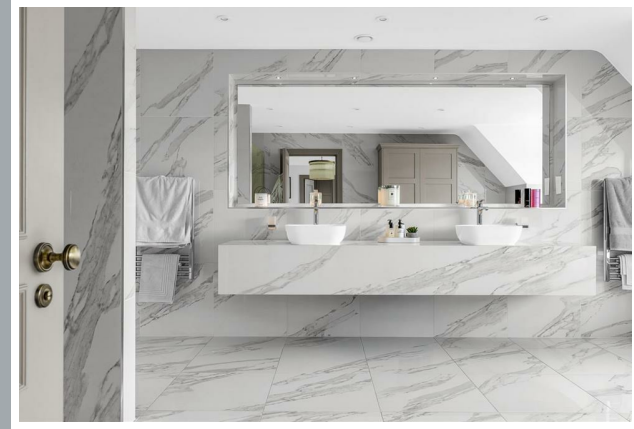
70 Fore Street, Hertford, Hertfordshire, SG14 1BY



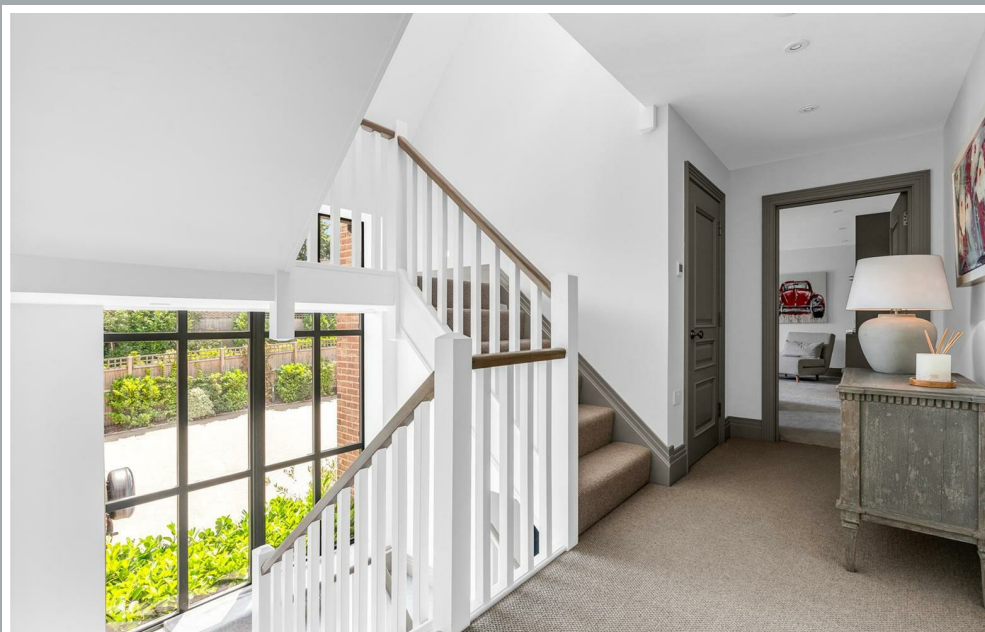
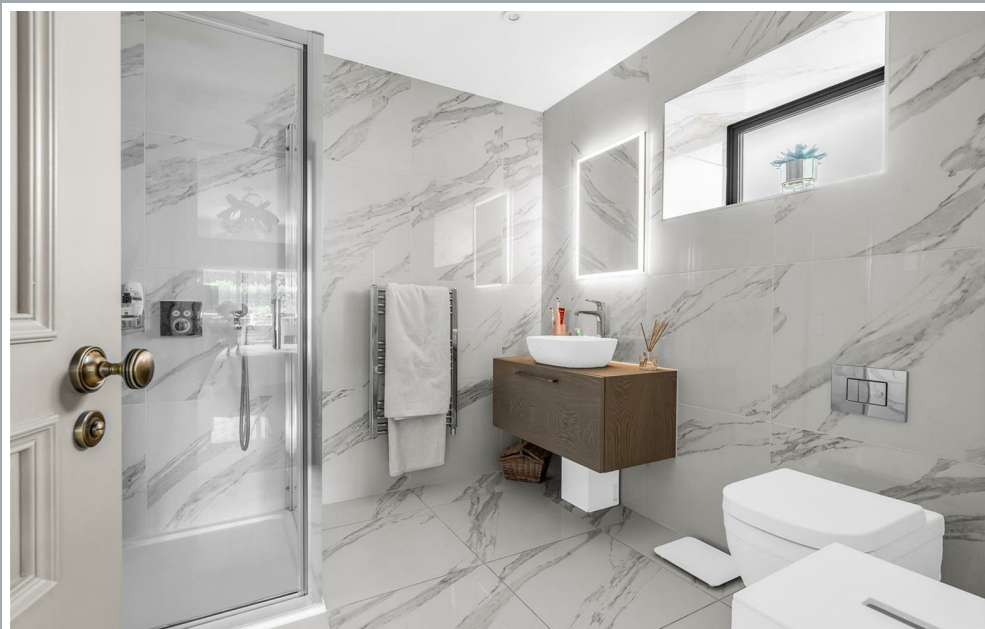
70 Fore Street, Hertford, Hertfordshire, SG14 1BY



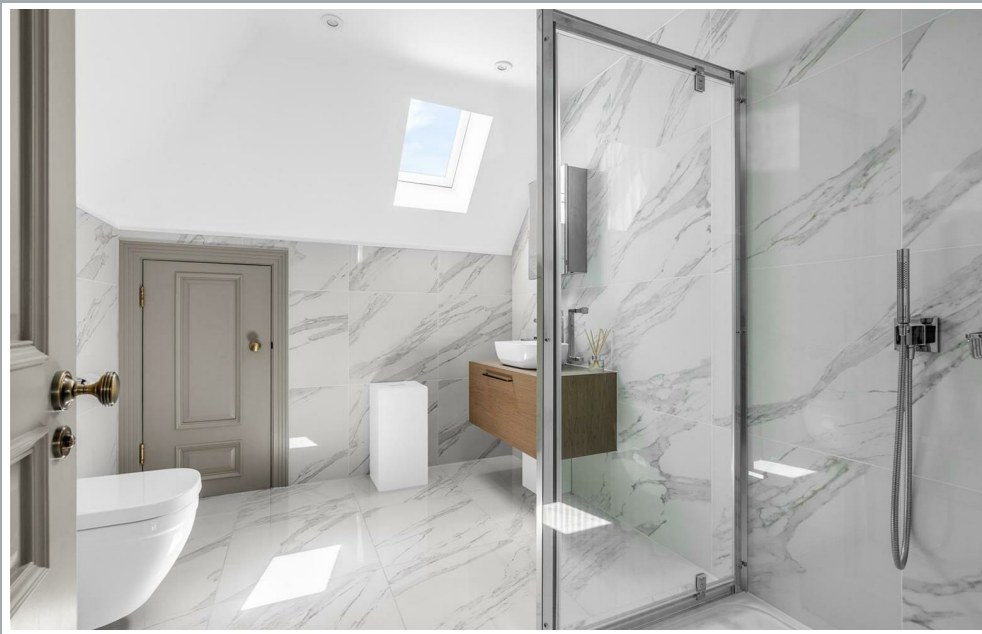
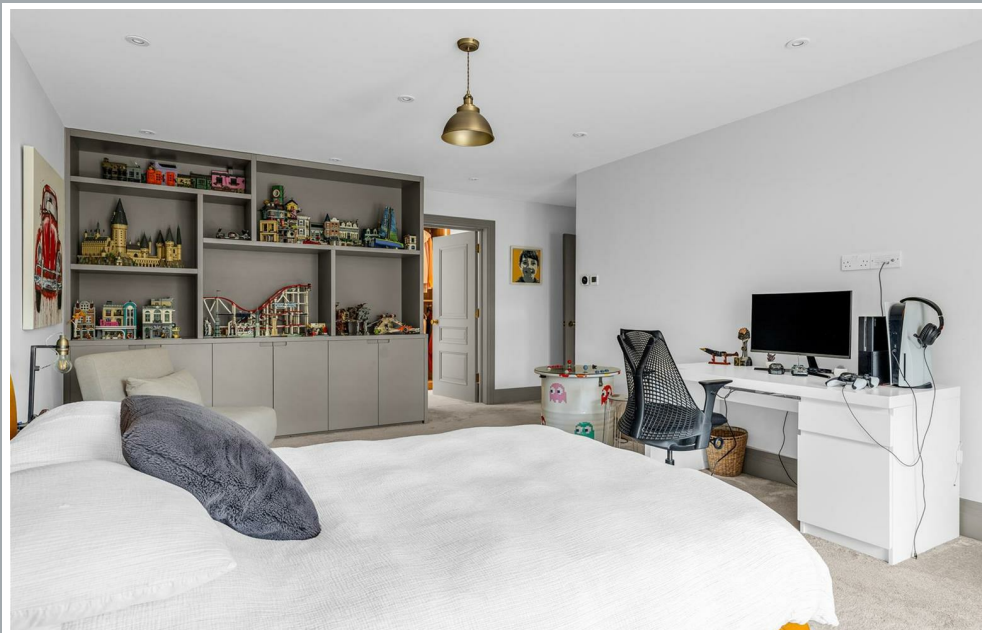
70 Fore Street, Hertford, Hertfordshire, SG14 1BY



70 Fore Street, Hertford, Hertfordshire, SG14 1BY



70 Fore Street, Hertford, Hertfordshire, SG14 1BY



70 Fore Street, Hertford, Hertfordshire, SG14 1BY



70 Fore Street, Hertford, Hertfordshire, SG14 1BY



70 Fore Street, Hertford, Hertfordshire, SG14 1BY



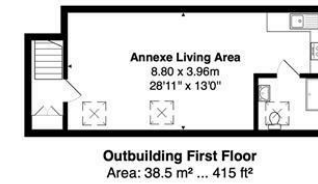
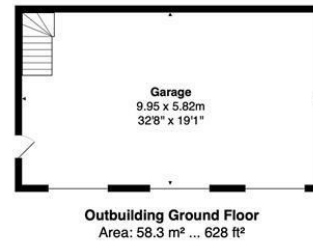
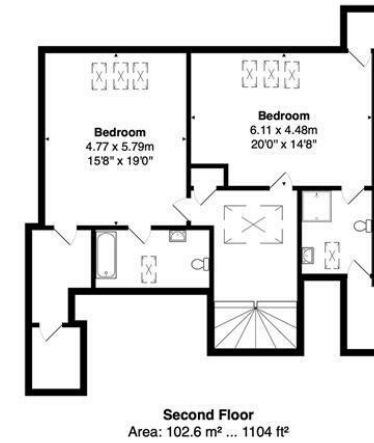
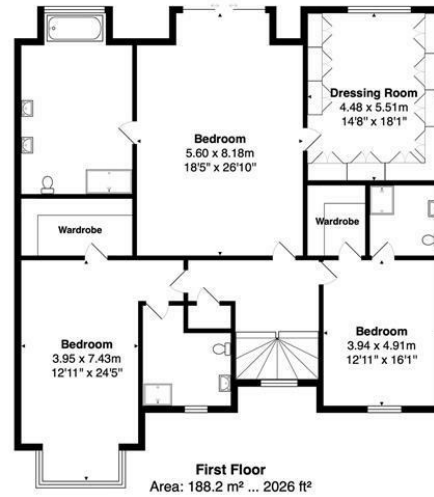
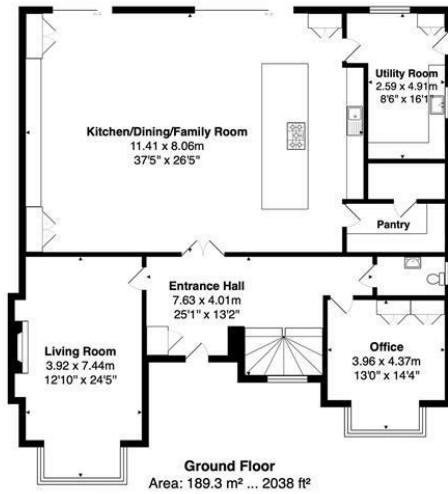
70 Fore Street, Hertford, Hertfordshire, SG14 1BY



70 Fore Street, Hertford, Hertfordshire, SG14 1BY



70 Fore Street, Hertford, Hertfordshire, SG14 1BY



Total Area: 642.1 m<sup>2</sup> ... 6912 ft<sup>2</sup>

FOR ILLUSTRATIVE PURPOSES ONLY. NOT TO SCALE  
Whilst every attempt has been made to ensure the accuracy of the floor plan shown, all measurements, positioning, fixtures, features, fittings and any other data shown are an approximate interpretation for illustrative purposes only and are not to scale. No responsibility is taken for any error, omission, miss-statement or use of data shown.  
Property marketing provided by [www.matthewkyle.co.uk](http://www.matthewkyle.co.uk)

These particulars, whilst believed to be accurate are set out as a general outline only for guidance and do not constitute any part of an offer or contract. Intending purchasers should not rely on them as statements of representation of fact, but must satisfy themselves by inspection or otherwise as to their accuracy. No person in this firm's employment has the authority to make or give any representation or warranty in respect of the property.



stevenoates.com