



**Constables**  
SALES & LETTINGS

Bridge Street , Neston

£150,000

An immaculately presented two bedroom terraced cottage located in the heart of Neston town centre.

The property offers good sized accommodation which includes lounge with inset gas fire, kitchen-breakfast room with integrated appliances, rear hallway with access to outside and door into the ground floor bathroom. To the first floor are two double bedrooms with built in wardrobes.

To the rear of the property is a courtyard style garden with timber shed, and to the front there is space to park one vehicle.

The property is offered for sale with no onward chain and early viewing is recommended.



# Constables

SALES & LETTINGS

- Terraced Period Home
- Lounge with gas Fire
- Rear Yard
- No Onward Chain

- Located in Neston town Centre
- Well-Appointed Kitchen with integrated Appliances
- Tenure: Freehold

- Two Double Bedrooms with Built in Wardrobes
- Ground Floor Bathroom
- Council Tax Band: B (Cheshire West & Chester)

### Lounge

11'8" x 11'9" (3.58m x 3.6m)

### Kitchen-Breakfast Room

12'2" x 11'9" (3.72m x 3.6m)

### Inner Hall

2'11" x 5'6" (0.89m x 1.69m)

### Bathroom

6'3" x 5'6" (1.93m x 1.68m)

### Landing

### Bedroom One

11'8" x 11'10" (3.56m x 3.61m)


### Bedroom Two

9'2" x 11'10" (2.8m x 3.61m)

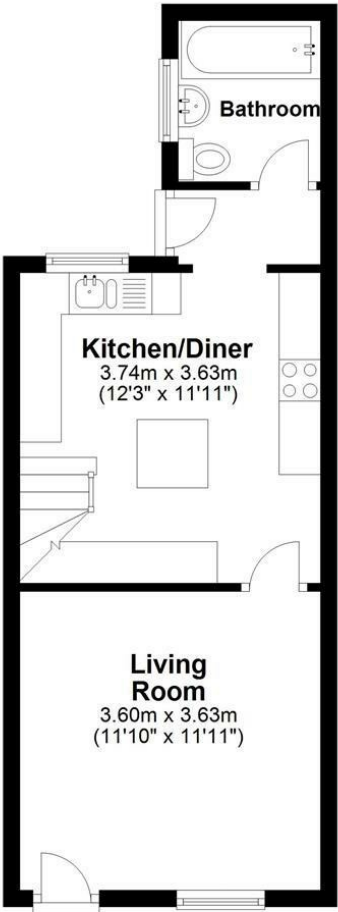




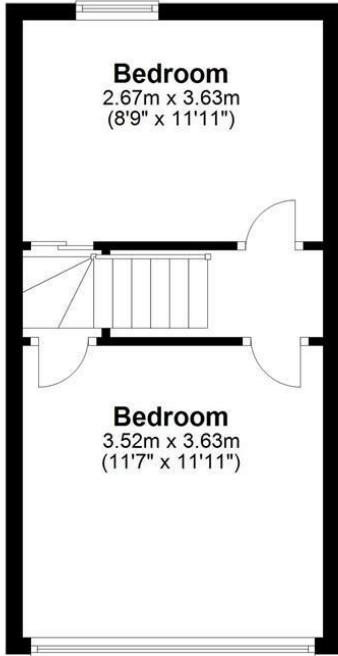
# EPC & Floor Plan

Energy Efficiency Rating		
	Current	Potential
<i>Very energy efficient - lower running costs</i>		
(92 plus) <b>A</b>		<b>87</b>
(81-91) <b>B</b>		
(69-80) <b>C</b>		
(55-68) <b>D</b>	<b>64</b>	
(39-54) <b>E</b>		
(21-38) <b>F</b>		
(1-20) <b>G</b>		
<i>Not energy efficient - higher running costs</i>		
<b>England &amp; Wales</b>	EU Directive 2002/91/EC	

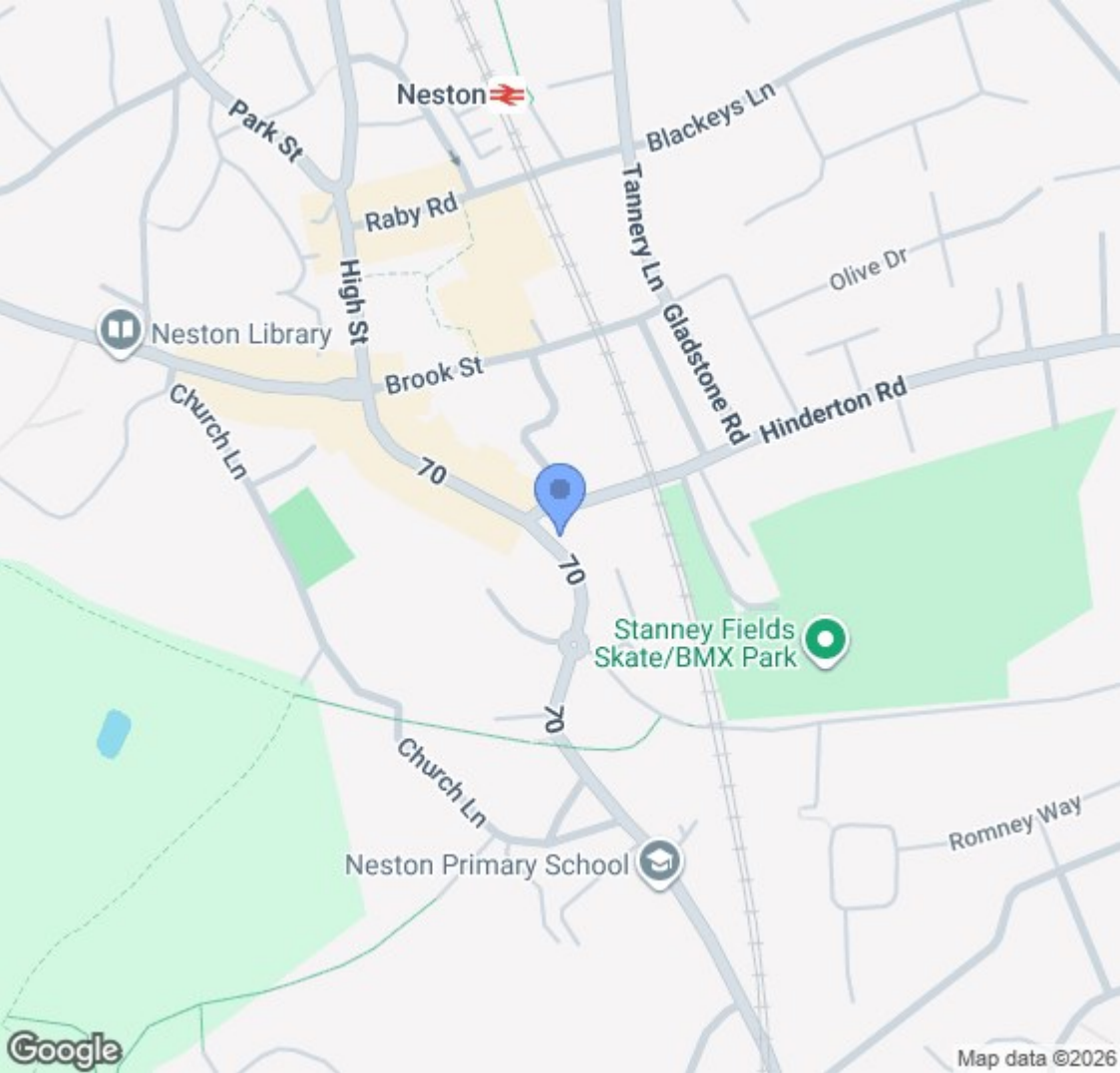
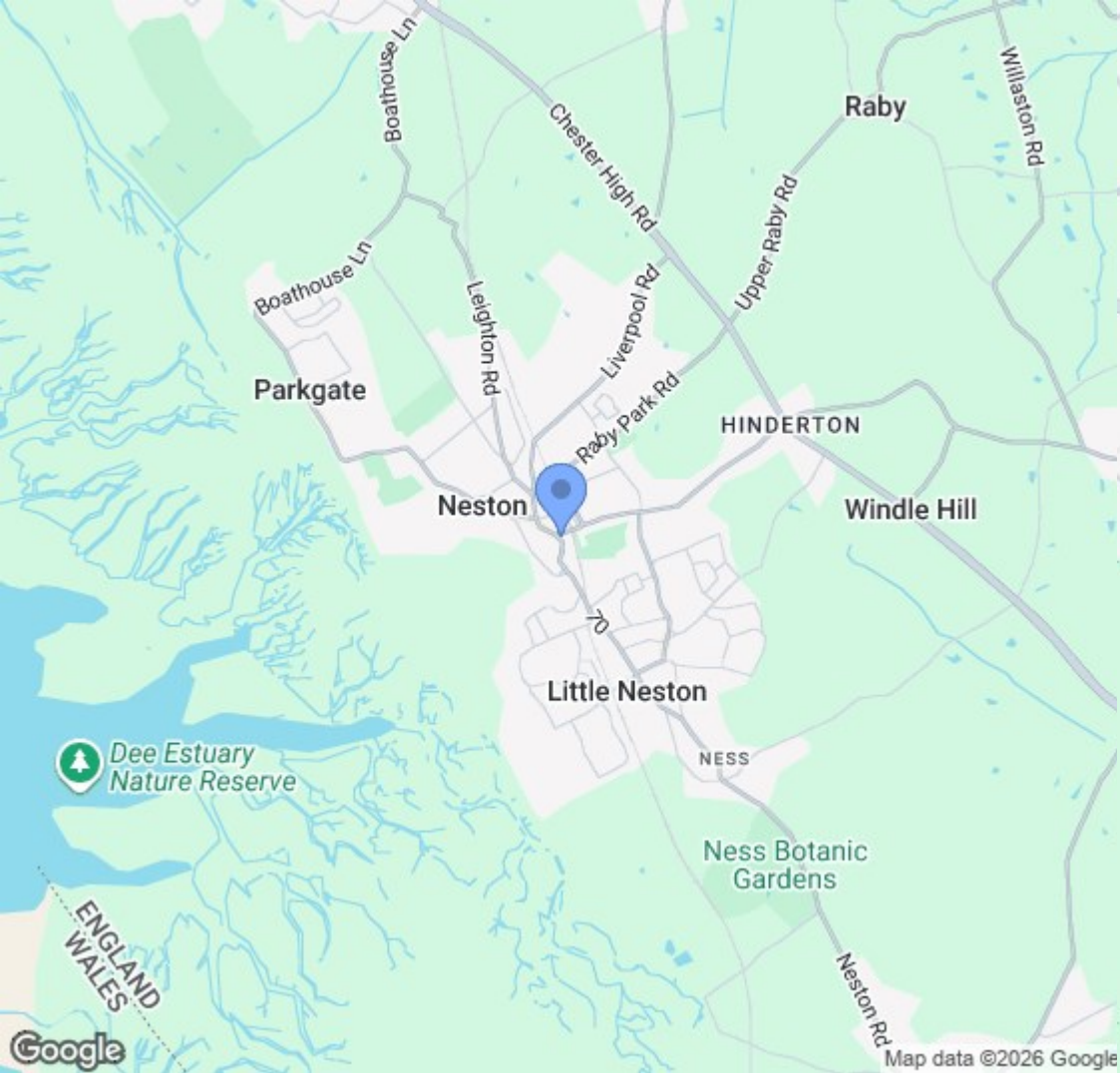
**Ground Floor**  
Approx. 32.2 sq. metres (346.8 sq. feet)



**First Floor**  
Approx. 27.0 sq. metres (290.7 sq. feet)



Total area: approx. 59.2 sq. metres (637.6 sq. feet)  
**5 Woodward Cottages, Bridge Street, NESTON**



Location Map

# Constables

S A L E S   &   L E T T I N G S

21 High Street, Neston

South Wirral, Neston, Cheshire

[www.constablesestateagents.co.uk](http://www.constablesestateagents.co.uk)

[info@constablesestateagents.co.uk](mailto:info@constablesestateagents.co.uk)

0151 353 1333