



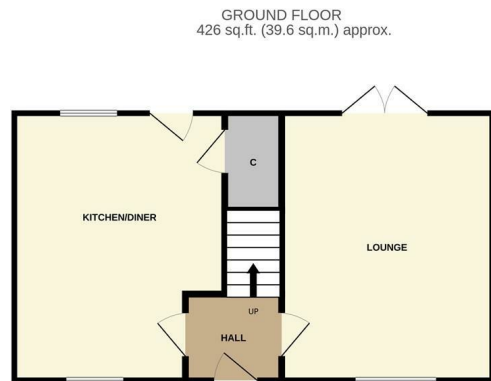
G.R.
Estates
unlock your happiness



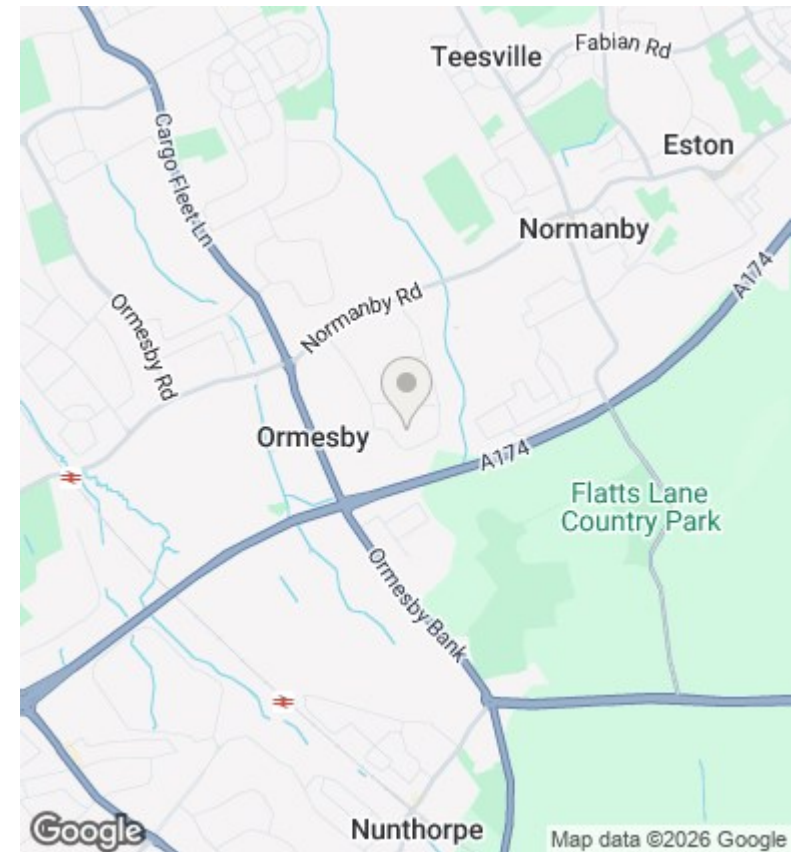
7 Conifer Close, Middlesbrough, TS7 9PL

£120,000

- A Well Presented Three Bedroom Mid Terraced Home Ideal For First Time Buyers or Families
- A Modern Family Bathroom Featuring A Bath And Separate Shower Enclosure
- A Bright Double Aspect Lounge Offering Plenty Of Natural Light And A Spacious Feel
- Off Street Parking To The Front Providing Space For Two Vehicles
- A Generous Family Kitchen Diner Perfect For Everyday Living And Entertaining
- An Enclosed Rear Garden With A Decked Seating Area And Useful Storage Shed



TOTAL FLOOR AREA: 852 sq.ft. (79.2 sq.m.) approx.
Whilst every attempt has been made to ensure the accuracy of the floorplan contained here, measurements of doors, windows, rooms and any other items are approximate and no responsibility is taken for any error, omission or mis-statement. This plan is for illustrative purposes only and should be used as such by any prospective purchaser. The services, systems and appliances shown have not been tested and no guarantee as to their operability or efficiency can be given.
Made with Metropix ©2026



Directions

Viewings

Viewings by arrangement only. Call 01642 378022 to make an appointment.

Council Tax Band

A

EPC Rating:

C

Energy Efficiency Rating		
	Current	Potential
Very energy efficient - lower running costs		
(92 plus) A		
(81-91) B		87
(69-80) C	74	
(55-68) D		
(39-54) E		
(21-38) F		
(1-20) G		
Not energy efficient - higher running costs		
England & Wales	EU Directive 2002/91/EC	