



Southwark Bridge Road, SE1 £775,000

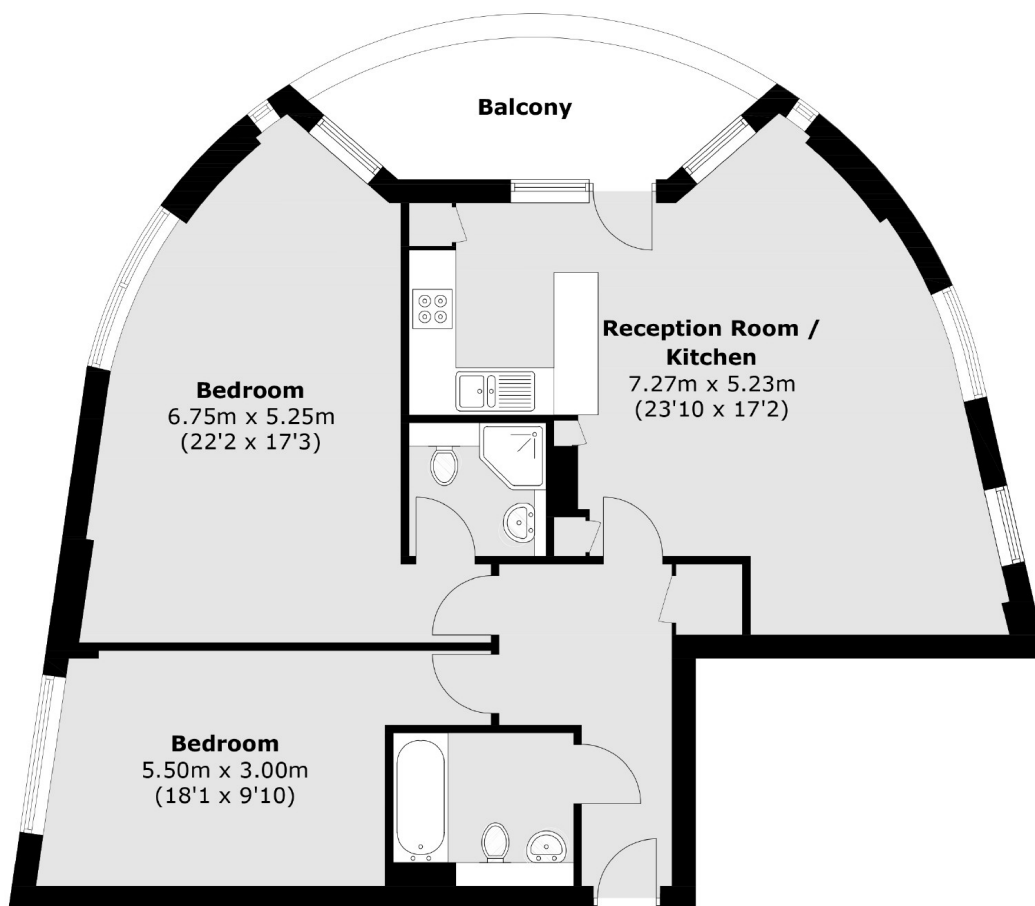
A beautifully presented lateral apartment of nearly 1,000 sq ft, featuring two generous double bedrooms, two modern bathrooms, and a stylish open-plan kitchen and living area, leading out onto a large private balcony. Additional benefits include secure underground parking, and outstanding views of The Shard.

This development enjoys a prime location, with Borough, London Bridge, and Southwark all just moments away. Residents can immerse themselves in the vibrant surroundings, with Borough Market, the South Bank, and Flat Iron Square close by - offering an eclectic mix of food, drink, and culture right on your doorstep.

Features

- 999 Year lease from 2002
- Secure Entry & Lift Access
- Views of the Shard
- Large Private Balcony
- Secure Underground parking
- Two Double Bedrooms
- Two Bathrooms

Southwark Bridge Road, London, SE1



Fifth Floor

Total area (approx.): 88.0 sq. m (947.2 sq. ft)
Balcony area (approx.): 7.7 sq. m (82.9 sq. ft)