

PRINCE
ALBERT
ROAD

REGENT'S PARK

AN IMPRESSIVE STUCCO FRONTED NASH VILLA



PRINCE ALBERT ROAD

REGENT'S PARK

An impressive stucco fronted Nash Villa set back behind electric gates on the fringe of Regent's Park. This substantial and extremely lateral double fronted freehold house is offered in excellent decorative condition and benefits from high ceilings, a wrap around garden, off street parking for several cars.

Regent's Park boasts elegant properties of a scale and luxury not found in many parts of London, the majority have views over the 410 acres of glorious parkland with boating lake, lawns and rose garden. St John's Wood High Street is 1.2 miles away with St John's Wood Underground Station being 1.4 miles away. The outstanding shops and amenities of Primrose Hill are also 0.4 miles away. Primrose Hill has one of the most picturesque high streets in the whole country. Crescent shaped, it hosts a wonderful mix of bookshops, cafes and restaurants, giving the area a village feel.







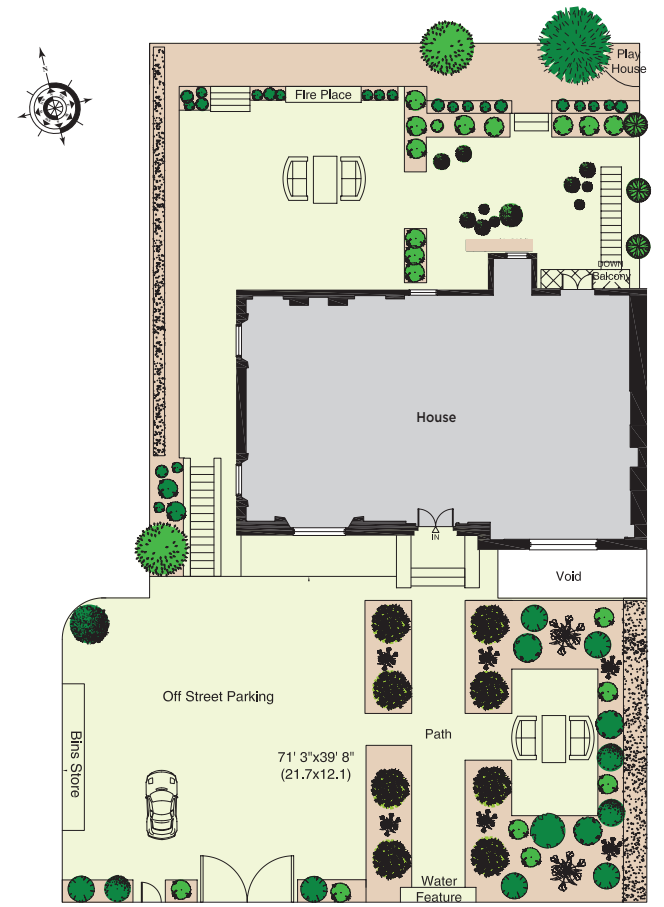
ACCOMMODATION

6 bedrooms
6 bathrooms
Kitchen
Reception room
Family room
Drawing room
Dining room
Study
Balcony
Utility room
Plant room
Rear garden
Front garden with parking
for several cars

TERMS

Tenure: Freehold
Local Authority: Camden
EPC Rating: E
Price Upon Application





Ground Floor



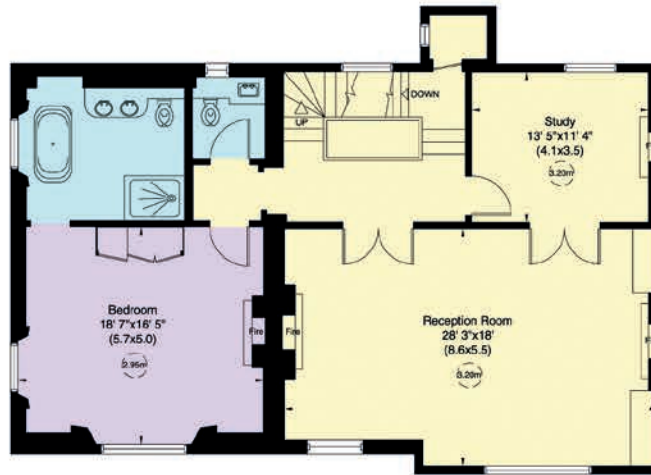
GROSS INTERNAL AREA

555 square metres / 5,978 square feet including under 1.5m

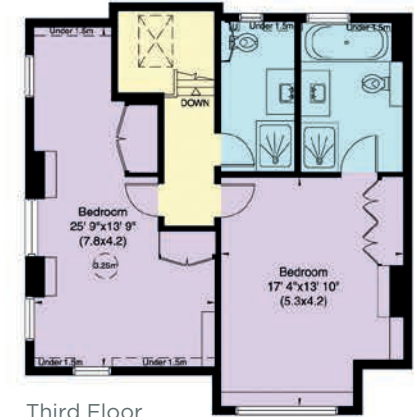
546 square metres / 5,885 square feet excluding under 1.5m



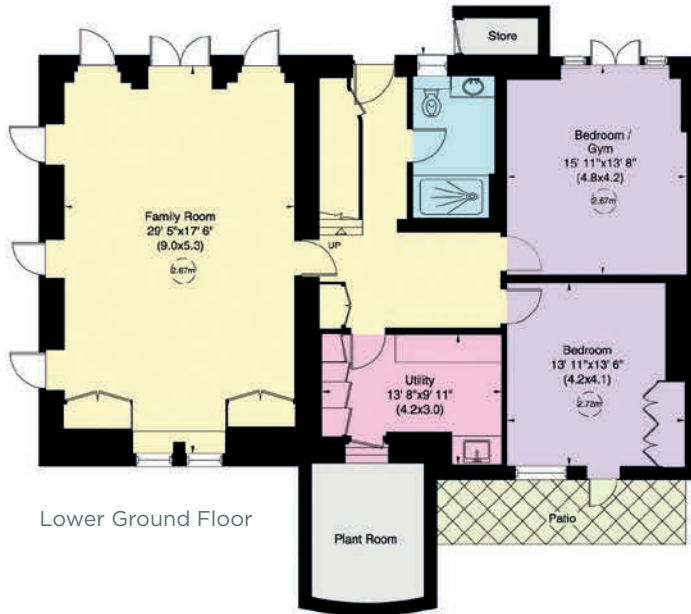
These plans are for guidance only and must not be relied upon as a statement of fact. Attention is drawn to the Important Notice.



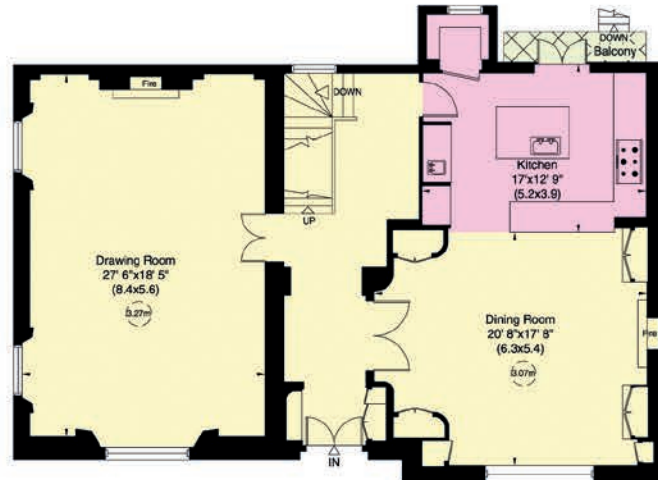
First Floor



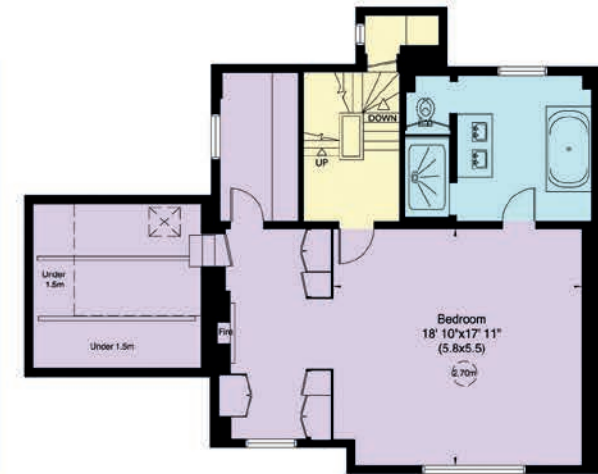
Third Floor



Lower Ground Floor



Ground Floor



Second Floor

IAN GREEN
RESIDENTIAL

020 7586 1000

info@iangreenresidential.com
www.iangreenresidential.com