

37 Crossland Road, Chorlton Green, Manchester, M21 9DU



**JP&Brimelow**  
ESTATE AGENTS



# Offers In The Region Of £360,000

2 1 1 C

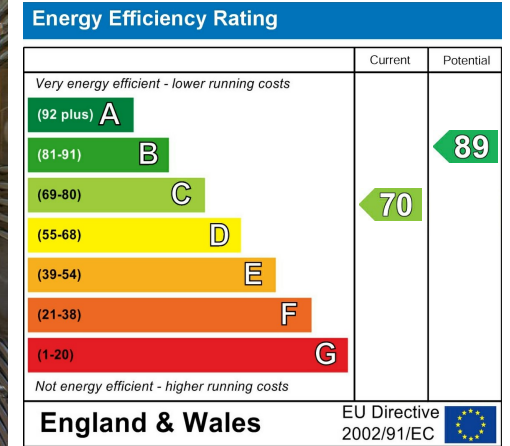
\*\*\*VIDEO TOUR AVAILABLE\*\*\* An attractive and immaculately presented, TWO DOUBLE BEDROOM, period, mid terrace garden fronted property. Situated in the heart of Chorlton Green on the sought-after Crossland Road. Within walking distance to good local primary schools, nearby to Beech Road with its cafe society and nearby to the Chorlton meadows and the Ees for walks, runs and cycling along the River Mersey. This well-planned property consists; a lounge with a stunning fireplace and opening to a fully fitted kitchen/dining room leading to a utility room with access out into the decked courtyard and a three-piece white bathroom suite completes the ground floor. To the first floor there is a landing leading to two good sized double bedrooms the principle benefitting from built in wardrobes completing this delightful home. The property benefits from gas central heating, high ceilings with picture rail and ceiling coving and a front enclosed paved garden ideal for a bench or table and chairs.





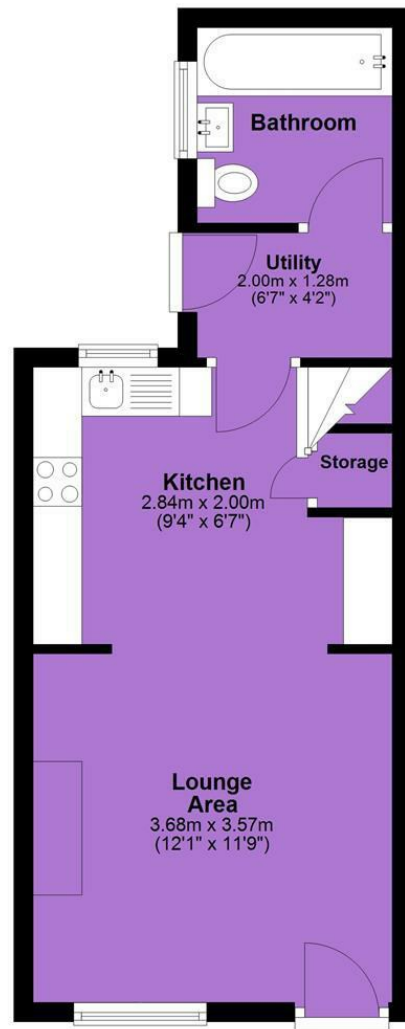


## EPC Chart

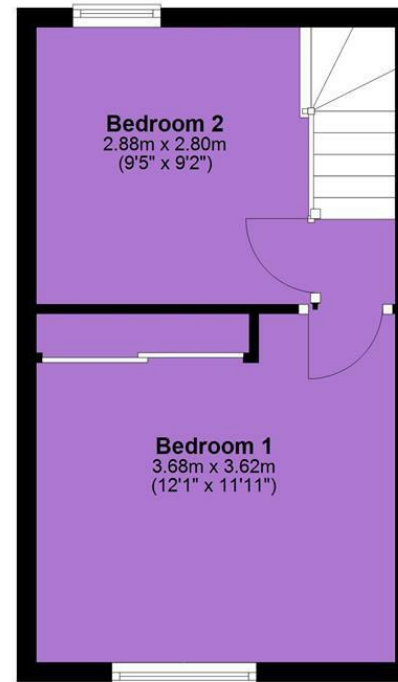


Tenure: **Freehold** Council Tax Band: **B**

## Ground Floor



## First Floor



JP & Brimelow Estate Agents Ltd  
430 Barlow Moor Road, Manchester, M21 8AD  
Tel: 0161 8822233  
E: sales@jpbrimelow.co.uk www.jpandbrimelow.co.uk



**JP & Brimelow**  
ESTATE AGENTS

NOTICE: JP & Brimelow Estate Agents Ltd for themselves and for the vendors or lessors of this property whose agents they are give notice that:

- (i) the particulars are set out as a general outline only for the guidance of intending purchasers or lessees, and do not constitute, nor constitute part of, an offer or contract;
- (ii) all descriptions, dimensions, references to the condition and necessary permissions for use and occupation, and other details are given in good faith and are believed to be correct but any intending purchasers or tenants should not rely on them as statements or representations of fact but must satisfy themselves by inspection or otherwise as to the correctness of each of them;
- (iii) no person in the employment of JP & Brimelow Estate Agents Ltd has any authority to make or give any representation or warranty whatever in relation to this property.

jpandbrimelowestateagents

@jpandbrimelow