



Luscombe Maye  
Since 1873



## Flat 1, Moat Hill House, Totnes

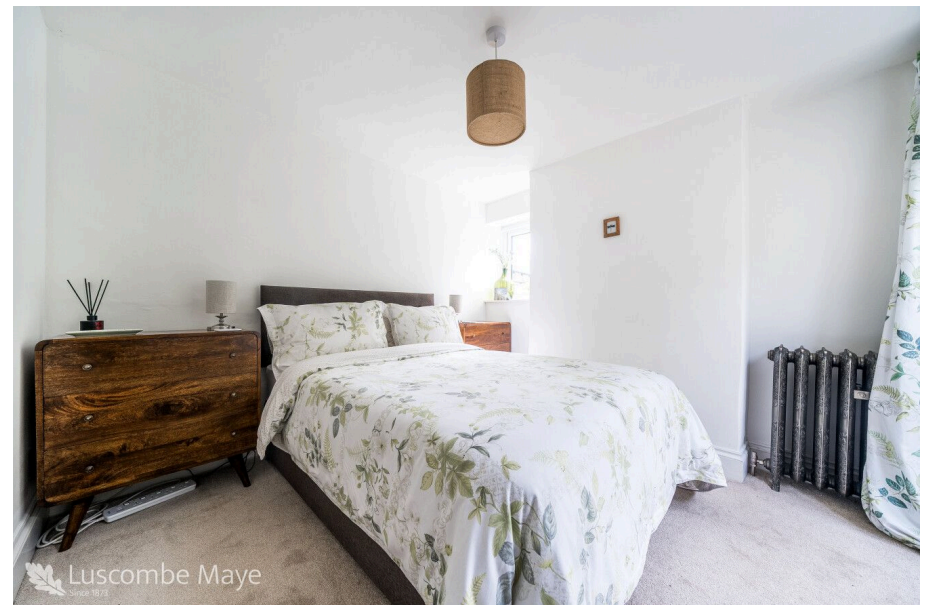
Guide Price £440,000

🛏️ 2 🚿 2 🛋️ 2



- No Forward Chain
- Two Double Bedrooms
- Immaculately Presented
- Conservatory
- Idyllic Garden
- Ground Floor Apartment
- Walking Distance to Town Centre
- Character Features Throughout
- Planning Permission for Extension
- Far Reaching Views







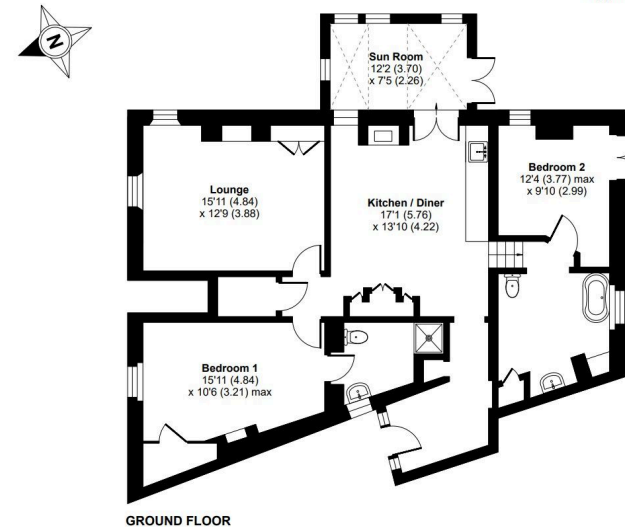
No Forward Chain | Ground Floor Apartment | Two Double Bedrooms | Walking Distance to Town Centre | Immaculately Presented | Character Features Throughout | Conservatory | Planning Permission for Extension | Idyllic Garden | Far Reaching Views



### Moat Hill House, Moat Hill, Totnes, TQ9

Approximate Area = 1164 sq ft / 108 sq m

For identification only - Not to scale



GROUND FLOOR

 **Luscombe Maye** Since 1873

#### Totnes:

59 Fore Street, Totnes TQ9 5NJ

01803 869920

[totnes@luscombemaye.com](mailto:totnes@luscombemaye.com)

[www.luscombemaye.com](http://www.luscombemaye.com)

Important Notice: Luscombe Maye gives notice that: 1. These particulars do not constitute an offer or contract or part thereof. 2. All descriptions, photographs and plans are for guidance only and should not be relied upon as statements or representations of fact. All measurements are approximate and not necessarily to scale. Any prospective purchaser must satisfy themselves of the correctness of the information within the particulars by inspection or otherwise. 3. Luscombe Maye does not have any authority to give any representations or warranties whatsoever in relation to this property (including but not limited to planning/building regulations), nor can it enter into any contract on behalf of the Vendor.