



## Barry Road, SE22

£525,000

A beautifully finished two double bedroom first floor Victorian conversion, offering bright lateral space and a refined interior throughout, with the added benefit of a large boarded loft and share of freehold.

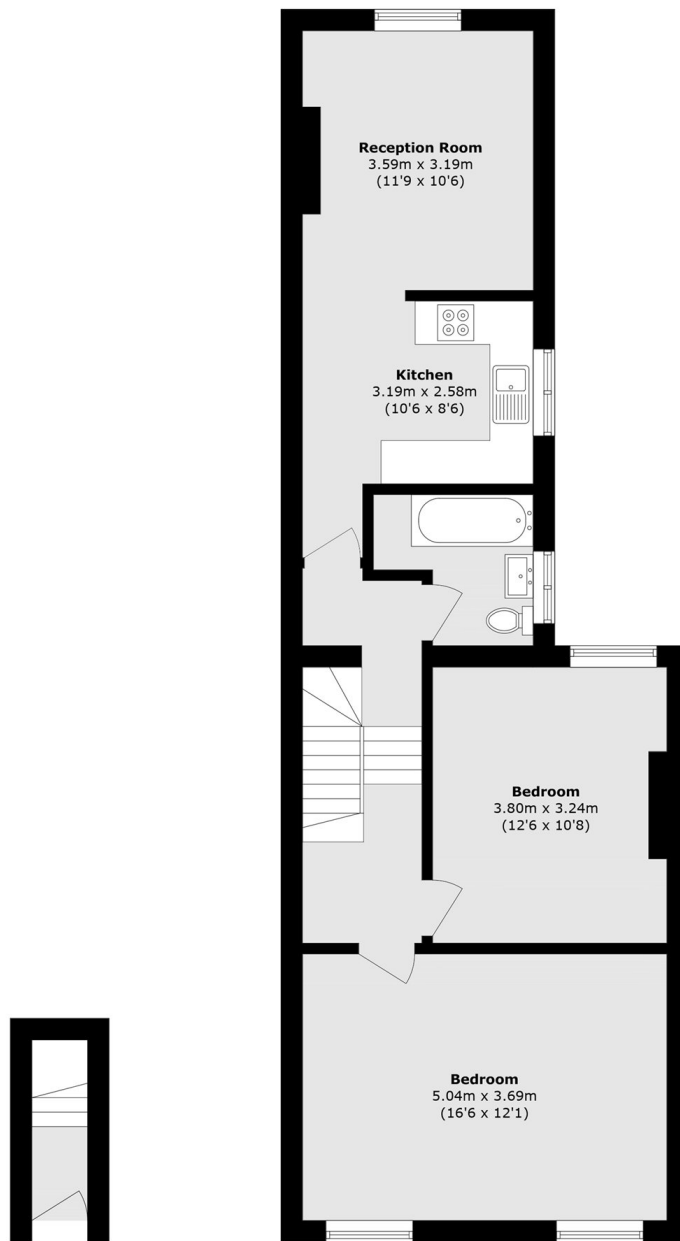
Set within an attractive period building on Barry Road, the property spans approximately 738 sq ft and has been thoughtfully upgraded to a high standard. The reception room is well proportioned and filled with natural light, complemented by parquet flooring and a calm, contemporary palette. A separate kitchen is neatly arranged and well equipped, while both bedrooms are generous doubles, making the layout equally suited to owner occupiers or sharers. The boarded loft provides excellent additional storage and future potential subject to the usual consents.

Barry Road sits moments from Lordship Lane and within easy reach of Peckham Rye Park, offering a balance of green space and vibrant local amenities in one of SE22's most desirable pockets.

### Features

Two double bedrooms  
738.4 square foot  
Large Boarded Loft Space  
Minutes to Lordship Lane  
Near Peckham Rye Park  
Share of freehold

# Barry Road, London, SE22



**Raised Ground Floor**

**First Floor**

Total area (approx.): 68.6 sq. m (738.4 sq. ft)