



Consort Road, SE15

£299,999

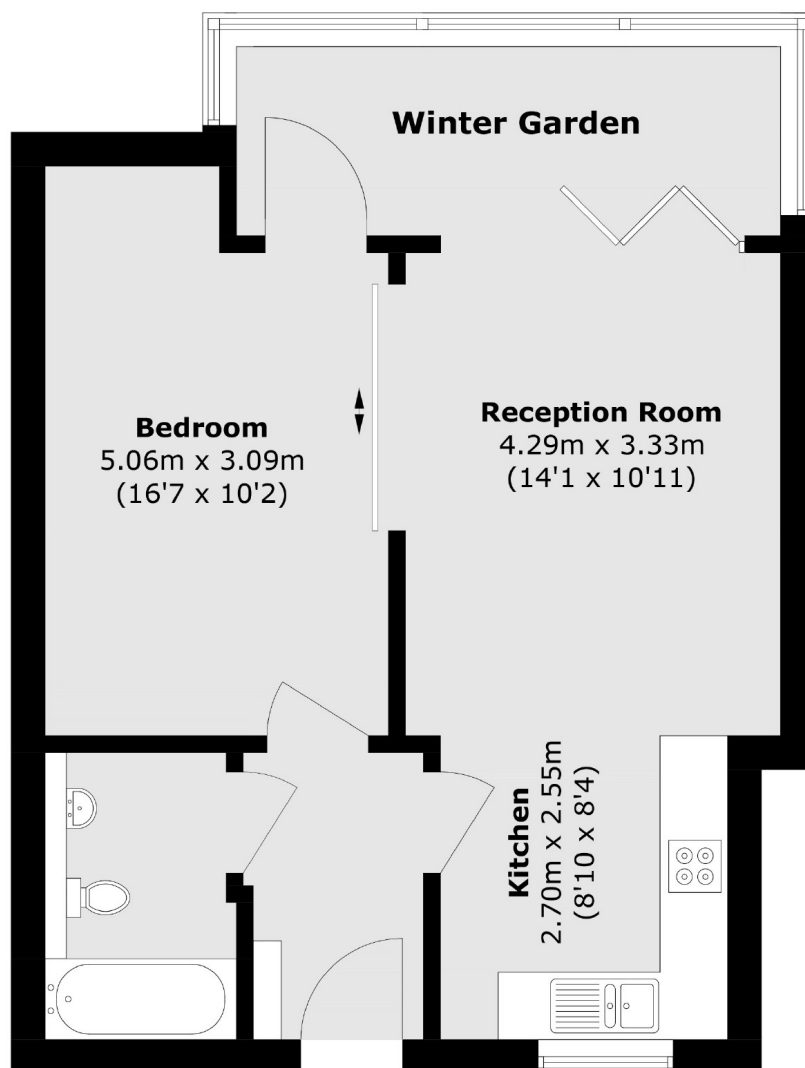
A bright and spacious one bedroom apartment set within the award winning Sarawak Court development in SE15. The property features a private winter garden, access to a beautifully maintained shared garden and presents an excellent opportunity for buyers looking to carry out light cosmetic refurbishment. The interior offers a generous open plan living and dining area, filled with natural light from large floor to ceiling windows. The adjoining kitchen provides ample storage and workspace, while the winter garden creates a versatile space that can be enjoyed year round. The double bedroom is well proportioned and complemented by a bathroom with scope for modernisation.

Sarawak Court is a celebrated development recognised for its architectural design and strong community feel. Residents benefit from landscaped communal gardens and convenient access to Queens Road Peckham and Nunhead Stations, offering quick connections to London Bridge, Victoria and the City.

Features

- Award Winning Building
- Private Balcony
- Large One Bedroom Apartment
- Close To Peckham Rye Station
- Communal Garden
- Vibrant Neighbourhood

Consort Road, London, SE15



Total area (approx.): 54.3 sq. m (584.4 sq. ft)