



76 Chislehurst Road , Chislehurst, BR7

£3,250 Per month

Two double bedroom apartment on the second (top) floor of an executive development in Chislehurst, offering approximately 1,272 sq ft of accommodation. The property comprises an entrance hallway, a spacious open-plan kitchen/living area with a Juliette balcony, and two double bedrooms, both with en-suite bathrooms (one shower room, one bathroom). The bedroom with the shower room also benefits from a private balcony. There is also the benefit of a large mezzanine level, accessed via a spiral staircase from the living area, which provides additional living space and fitted storage cupboards.

Other features of each apartment include:

- Underfloor heating throughout
- Intruder alarm
- Siemens integrated kitchen appliances including ceramic hob with induction fan, double oven with microwave, fridge/freezer
- Capel wine cooler
- Caesarstone quartz kitchen work surfaces
- Building with lift
- Secure fob entry system
- Allocated gated and covered parking
- Communal gardens

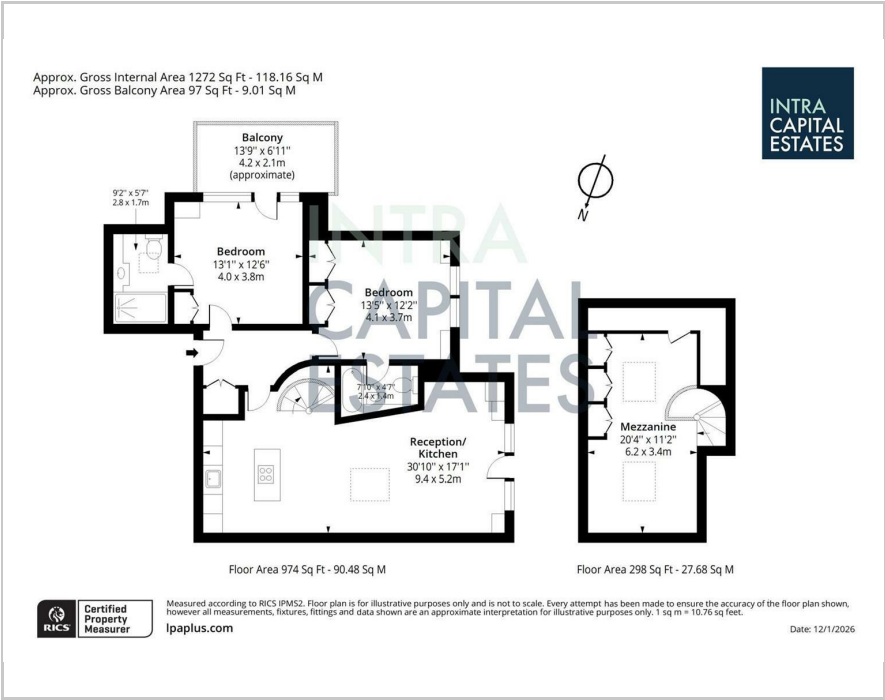
Viewing

Please contact our Intra Capital Estates Office on 0207 183 6676 if you wish to arrange a viewing appointment for this property or require further information.

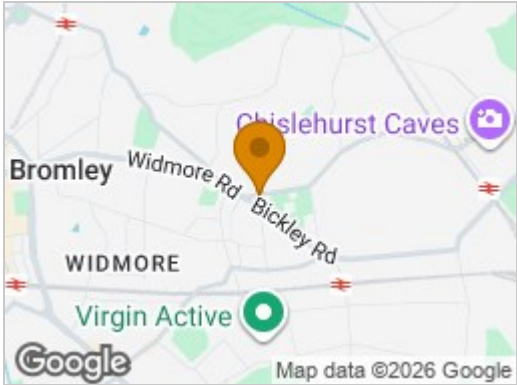
- Executive Gated Development
- Two Bed/Two Bath
- Large Mezzanine Floor
- High Specification
- Top Floor (building with lift)
- Allocated Covered Parking
- Communal Garden
- Underfloor Heating
- Close To Transport Links And Amenities
- Unfurnished



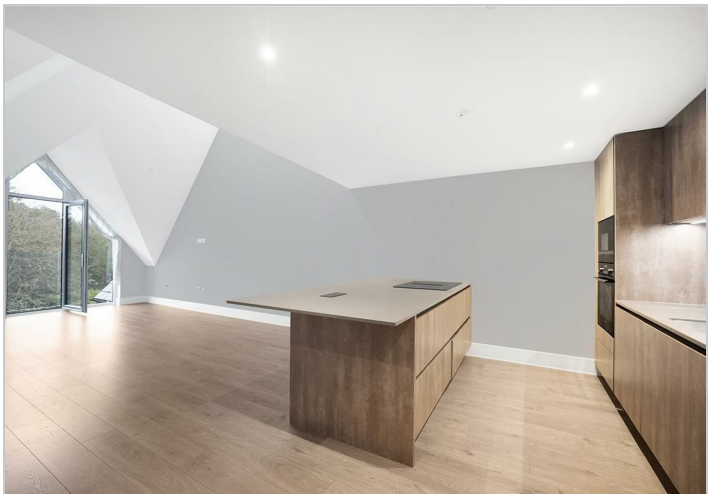
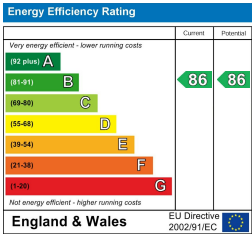
Floor Plan



Area Map



Energy Efficiency Graph



These particulars, whilst believed to be accurate are set out as a general outline only for guidance and do not constitute any part of an offer or contract. Intending purchasers should not rely on them as statements of representation of fact, but must satisfy themselves by inspection or otherwise as to their accuracy. No person in this firms employment has the authority to make or give any representation or warranty in respect of the property.

INTRA-CAPITAL ESTATES

Paddington Works, 8 Hermitage Street, London, W2 1BE
Tel: 0207 183 6676 Email: info@intra-capital.co.uk
www.intra-capital.co.uk

Intra-Capital Estates is a trading name of Intra Capital Estates Limited, a private limited company registered in England and Wales.
Registered number: 11840427. VAT registration number: 31763281. Registered office Paddington Works, 8 Hermitage Street, London, W2 1BE.

MODERN APPROACH
TRADITIONAL VALUES

