



Interchange, Coventry Road, Sheldon, Birmingham

burchell  
edwards



### Property Description

No Chain!!! A FANTASTIC opportunity for a FIRST TIME BUYER or DOWNSIZER! The property is ideally located for easy access to SOLIHULL, LOCAL SHOPS, BUS and ROAD LINKS. Do not miss this opportunity, so call us NOW on 0121 742 1725.

### Kitchen/ Lounge

Double glazed window to rear elevation, a range of wall and base units with work surface over incorporating a sink with drainer unit, electric hob and oven, integrated appliances, electric radiator and laminate flooring.

### Bedroom

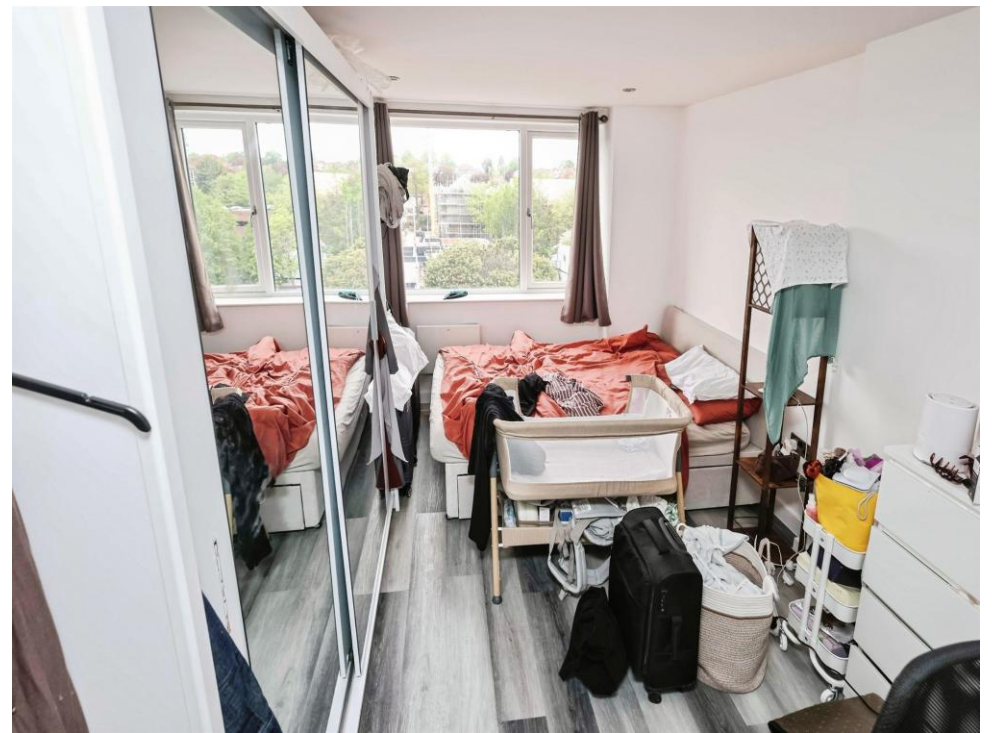
Double glazed window to rear elevation, electric radiator and laminate flooring.

### Shower Room

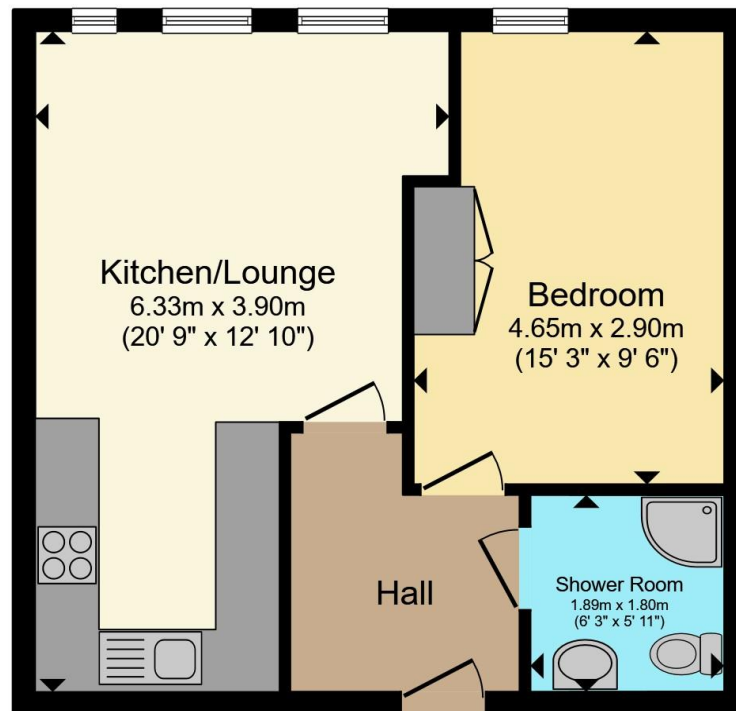
Walk in shower, W.C, wash hand basin, extractor, tiling to walls and tiled flooring.











Total floor area 41.2 m<sup>2</sup> (443 sq.ft.) approx

This floor plan is for illustrative purposes only. It is not drawn to scale. Any measurements, floor areas (including any total floor area), openings and orientation are approximate. No details are guaranteed, they cannot be relied upon for any purpose and they do not form part of any agreement. No liability is taken for any error, omission or misstatement. A party must rely upon its own inspection(s). Powered by [www.propertybox.io](http://www.propertybox.io)



To view this property please contact Burchell Edwards on

**T 0121 742 1725**  
**E [sheldon@burchelledwards.co.uk](mailto:sheldon@burchelledwards.co.uk)**

2208 Coventry Road Sheldon  
 BIRMINGHAM B26 3JH

EPC Rating: D Council Tax  
 Band: A

Service Charge:  
 2641.65

Ground Rent:  
 Ask Agent

Tenure: Leasehold

**view this property online [burchelledwards.co.uk/Property/SHL211591](http://burchelledwards.co.uk/Property/SHL211591)**

This is a Leasehold property with details as follows; Term of Lease 200 years from 01 Jan 2019. Should you require further information please contact the branch. Please Note additional fees could be incurred for items such as Leasehold packs.



1. MONEY LAUNDERING REGULATIONS Intending purchasers will be asked to produce identification documentation at a later stage and we would ask for your co-operation in order that there will be no delay in agreeing the sale. 2. These particulars do not constitute part or all of an offer or contract. 3. The measurements indicated are supplied for guidance only and as such must be considered incorrect. Potential buyers are advised to recheck measurements before committing to any expense. 4. We have not tested any apparatus, equipment, fixtures, fittings or services and it is in the buyers interest to check the working condition of any appliances.

Burchell Edwards is a trading name of Connells Residential which is registered in England and Wales under company number 1489613, Registered Office is Cumbria House, 16-20 Hockliffe Street, Leighton Buzzard, Bedfordshire, LU7 1GN. VAT Registration Number is 500 2481 05.

**See all our properties at [www.burchelledwards.co.uk](http://www.burchelledwards.co.uk) | [www.rightmove.co.uk](http://www.rightmove.co.uk) | [www.zoopla.co.uk](http://www.zoopla.co.uk)**

Property Ref: SHL211591 - 0003