

North End Way

London, NW3

WAYNE & SILVER



The Property

Located in a prime position, alongside the picturesque Hampstead Heath and Golders Hill Park, and conveniently located almost equidistant between Hampstead Village and Golders Green, this charming double-fronted three-bedroom house offers 1,865 sq. ft of well-arranged living space set over three floors.

Presented in very good decorative order throughout, the ground floor features a bright double reception room and a modern kitchen. The first floor comprises a spacious principal bedroom with a large en-suite bathroom, a second bedroom/study, a utility room, and a guest WC (with potential to convert into an additional bathroom). The second floor hosts a generous guest bedroom with its own en-suite shower room.

To the rear is a delightful south-west facing patio garden, ideal for outdoor entertaining, while the front of the property benefits from off-street parking for one car. The excellent transport links of Golders Green Underground Station (Northern Line) are less than a ten-minute walk away.

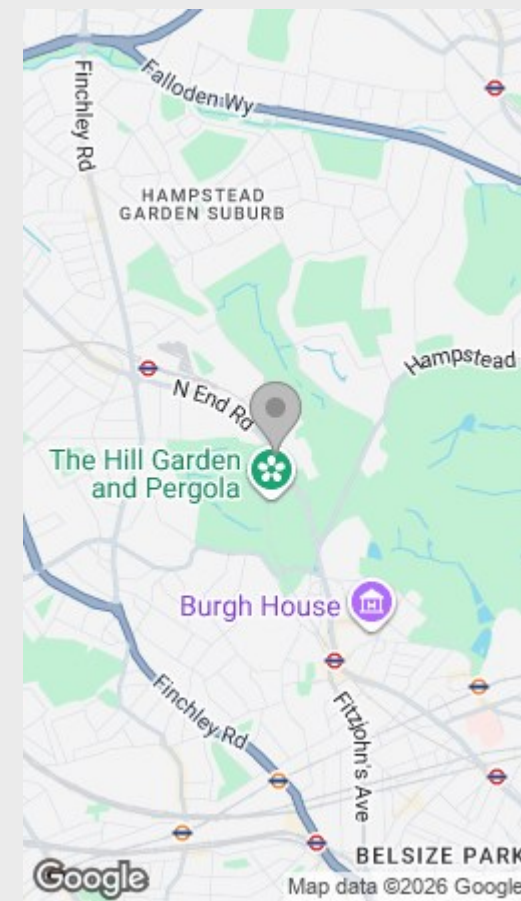
Key Features

- Prime location
- Off-street parking & 10 mins to Northern Line
- South-west facing patio garden
- Bright double reception & modern kitchen
- Three bedrooms, two en-suites
- Good decorative order throughout
- Underfloor heating to kitchen, principal bedroom and family bathroom
- Air conditioning to principal and third bedroom





Location





WAYNE
& SILVER

North End Way

ASKING PRICE

£1,625,000

BEDROOMS

3

BATHROOMS

2

INTERNAL

1865.00 sq ft

EPC

D

LOCAL COUNCIL

Camden

TAX BAND

G

TENURE

Freehold

YEARS REMAINING

n/a



Floorplan & EPC

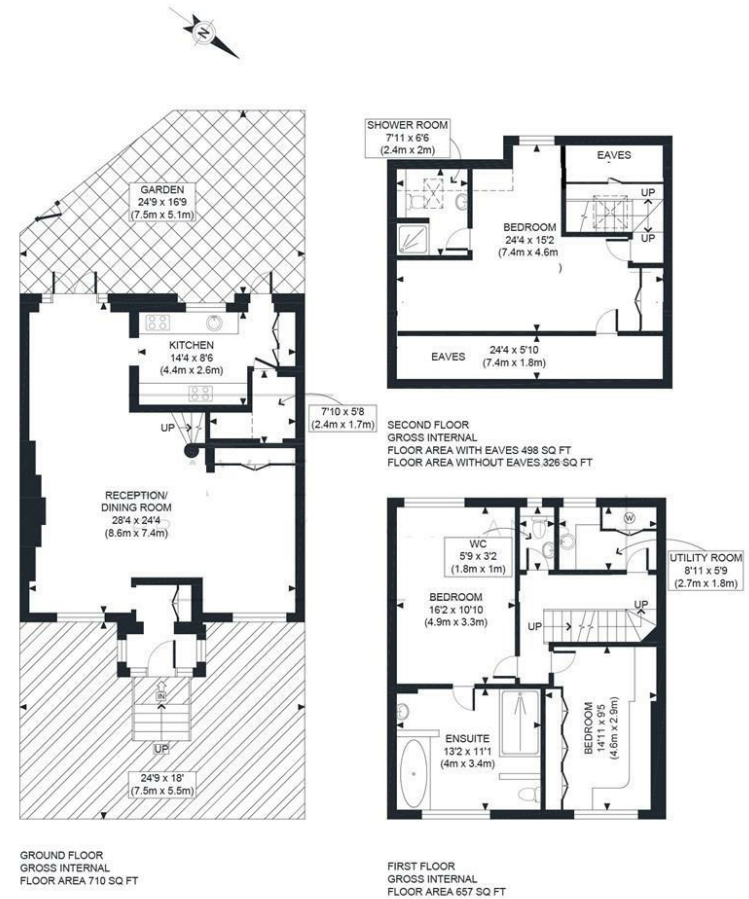
ASKING PRICE

£1,625,000

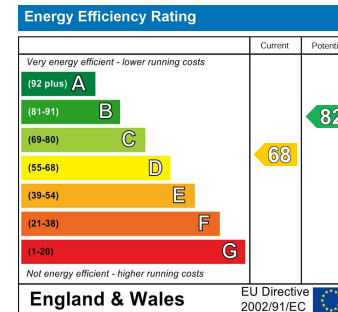
IMPORTANT INFORMATION

Wayne & Silver, its clients and any joint agents give notice that 1: They are not authorised to make or give any representations or warranties in relation to the property either here or elsewhere, either on their own behalf or on behalf of their client or otherwise. They assume no responsibility for any statement that may be made in these particulars. These particulars do not form part of any offer or contract and must not be relied upon as statements or representations of fact. 2: Any areas, measurements or distances are approximate. The text, photographs and plans are for guidance only and are not necessarily comprehensive. It should not be assumed that the property has all necessary planning, building regulation or other consents and Wayne & Silver have not tested any services, equipment or facilities. Purchasers must satisfy themselves by inspection or otherwise.

**WAYNE
& SILVER**



APPROX. GROSS INTERNAL FLOOR AREA WITH EAVES 1865 SQ FT / 173 SQM	The Village
APPROX. GROSS INTERNAL FLOOR AREA WITHOUT EAVES 1696 SQ FT / 157 SQM	date 07/10/25
Disclaimer: Floor plan measurements are approximate, and are for illustrative purposes only. While we do not doubt the floor plan accuracy and completeness, you or your advisors should conduct a careful, independent investigation of the property in respect of monetary valuation.	photoplan



WAYNE & SILVER

41 Heath Street
Hampstead
London
NW3 6UA

We would be delighted to tell you more
020 7431 4488
info@wayne-silver.com

wayne-silver.com

Important Notice: Wayne & Silver, its clients and any joint agents give notice that 1: They are not authorised to make or give any representations or warranties in relation to the property either here or elsewhere, either on their own behalf or on behalf of their client or otherwise. They assume no responsibility for any statement that may be made in these particulars. These particulars do not form part of any offer or contract and must not be relied upon as statements or representations of fact. 2: Any areas, measurements or distances are approximate. The text, photographs and plans are for guidance only and are not necessarily comprehensive. It should not be assumed that the property has all necessary planning, building regulation or other consents and Wayne & Silver have not tested any services, equipment or facilities. Purchasers must satisfy themselves by inspection or otherwise.