



## Westfield

Kidderpore Avenue, Hampstead NW3      Asking Price £2,599,999

An exceptional and immaculate three double bedroom, three bathroom duplex apartment featuring a wonderful living space with direct access to a private roof terrace offering stunning panoramic views of London's skyline.

The apartment has been meticulously refurbished by the current owner using the very best fixtures, fittings and appliances, and further boasts two allocated secure underground parking spaces.

Westfield is one of Hampstead's premier purpose-built developments, situated on Kidderpore Avenue, a quiet residential turning in Hampstead, the development provides benefits such as concierge, an indoor swimming pool, gymnasium and landscaped communal gardens.

To fully appreciate this beautiful home and all its benefits, an internal inspection is highly recommended.



# Westfield

Kidderpore Avenue, Hampstead NW3

- Spectacular duplex apartment
- Prestigious purpose-built development
- Three double bedrooms & three Bathrooms
- Stunning 31' reception room
- Private roof terrace with panoramic views of London
- Two allocated secure underground parking spaces
- Concierge, swimming pool & gymnasium
- Beautiful landscaped communal gardens
- Long lease



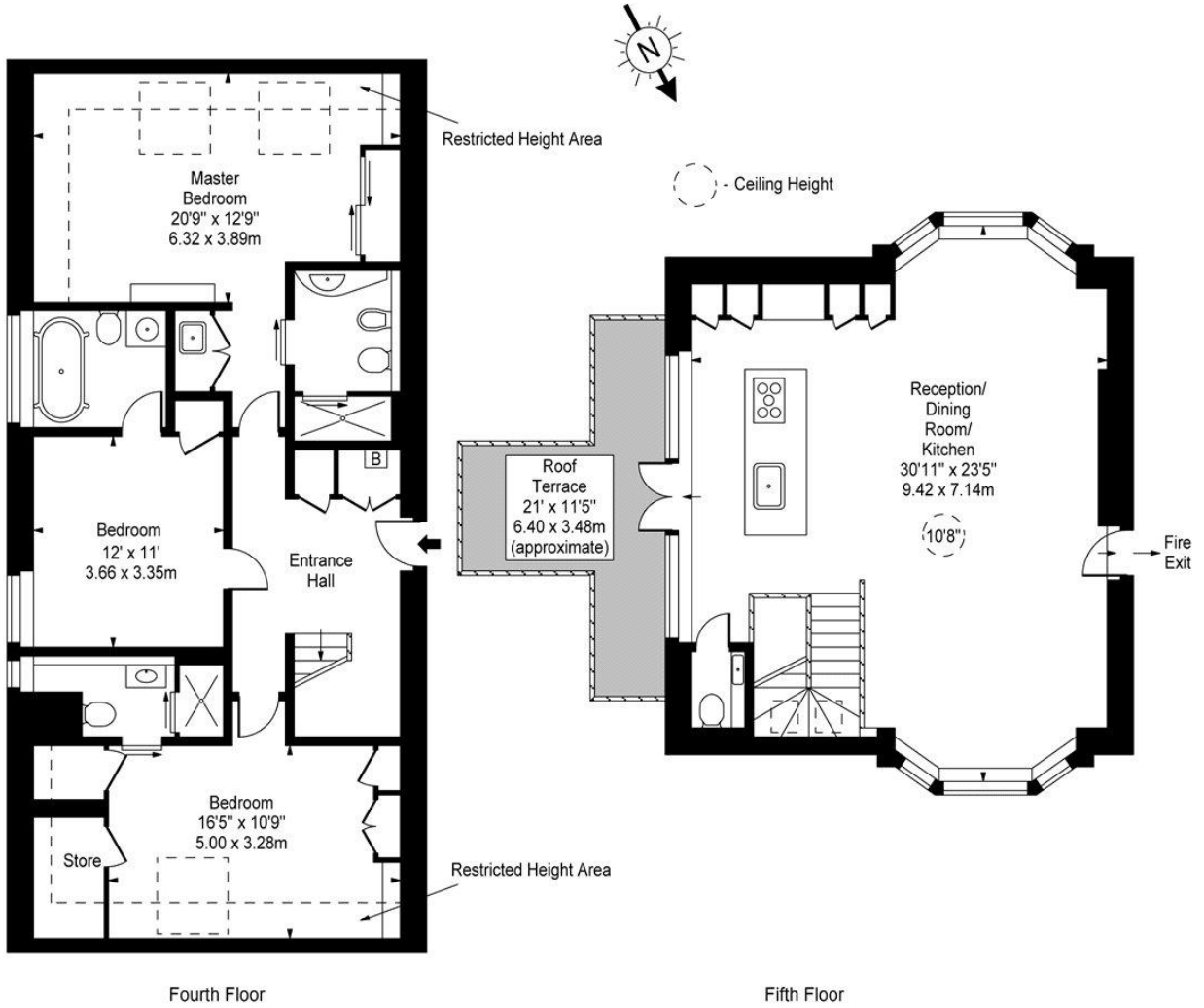
**Tenure:** Leasehold 969 years remaining  
**Service Charge:** £18,000 per annum  
**Ground Rent:** £400 per annum  
**Local Authority:** Camden  
**Council Tax Band:** G

Energy Efficiency Rating		Current	Potential
Very energy efficient - lower running costs			
(94-100)	A		
(81-93)	B		
(69-80)	C	77	77
(55-68)	D		
(39-54)	E		
(21-38)	F		
(1-20)	G		
Not energy efficient - higher running costs			
England, Scotland & Wales		EU Directive 2002/91/EC	

**Chestertons Hampstead Sales**

55-56 Hampstead High Street  
 Hampstead  
 NW3 1QH  
 hampstead@chestertons.co.uk  
 020 7794 3311  
 chestertons.co.uk

**Westfield,  
Kidderpore Avenue, NW3**



Approx Gross Internal Area    **1684 Sq Ft - 156.4 Sq M**  
 Approx. Floor Area Including Restricted Heights    **1811 Sq Ft - 168.2 Sq M**

For Illustration Purposes Only - Not To Scale